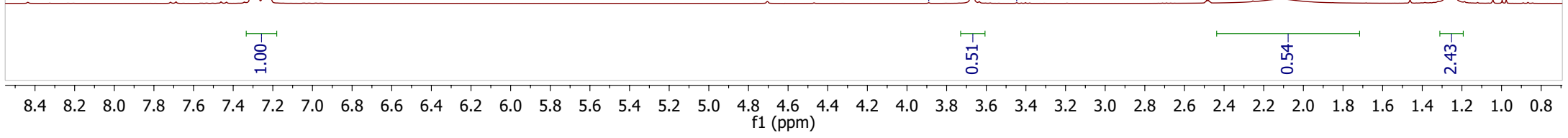
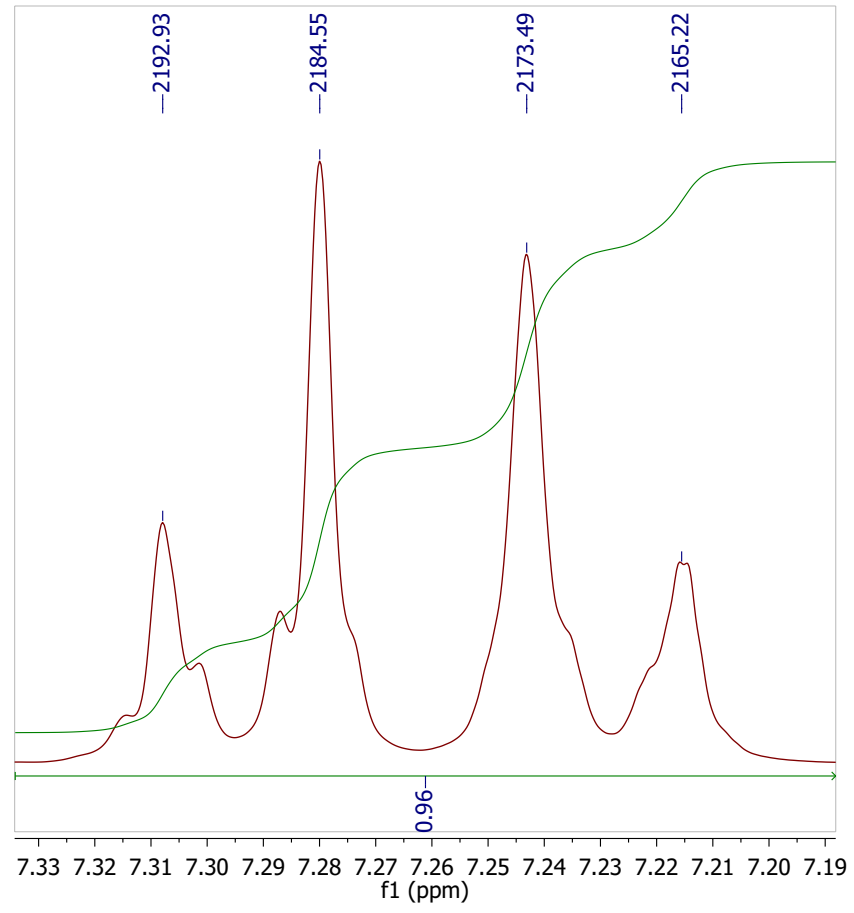


<sup>1</sup>H NMR 300.08 MHz

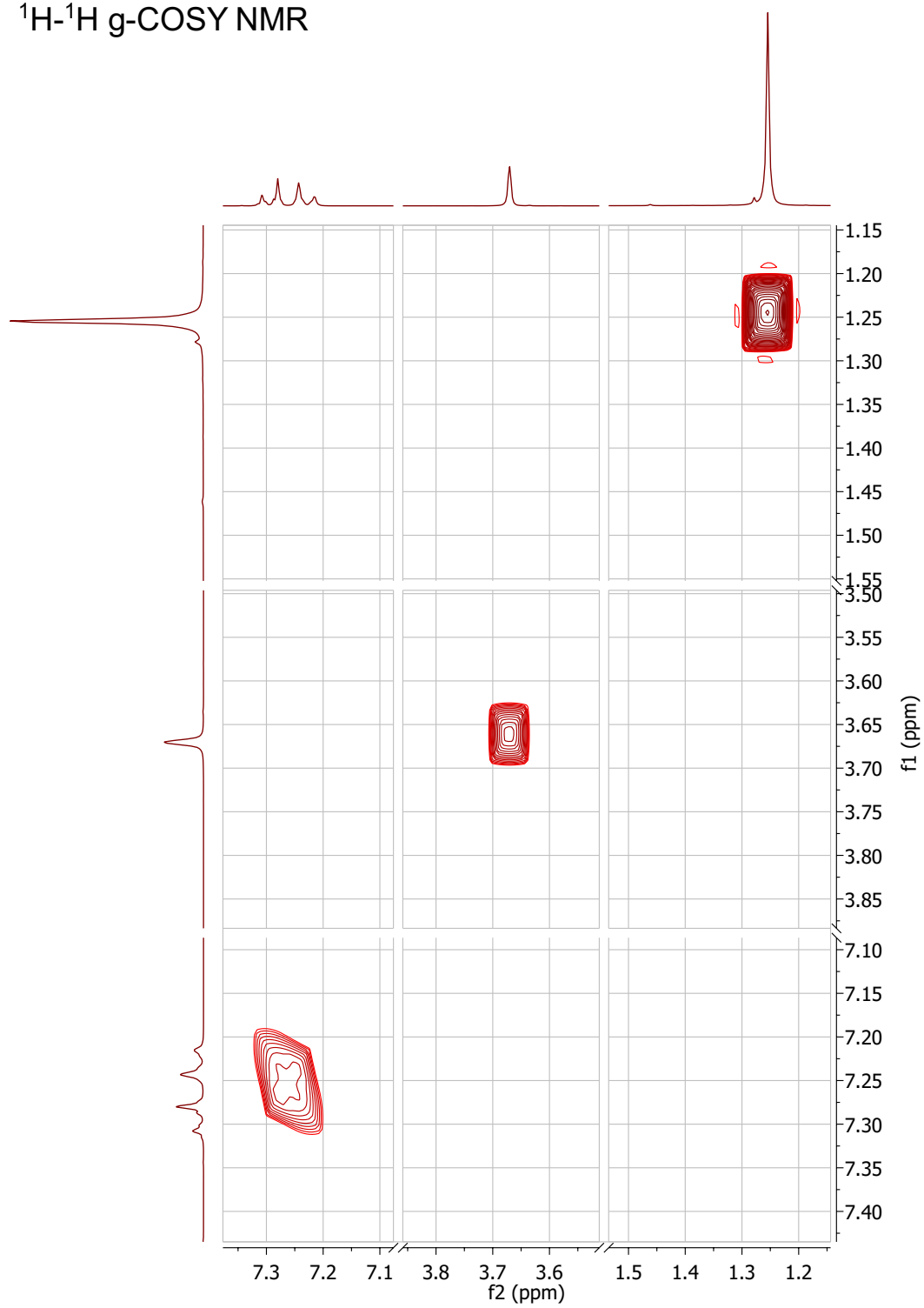
2192.93  
2184.55  
2173.49  
2165.22

1167.34  
1101.39  
1034.21

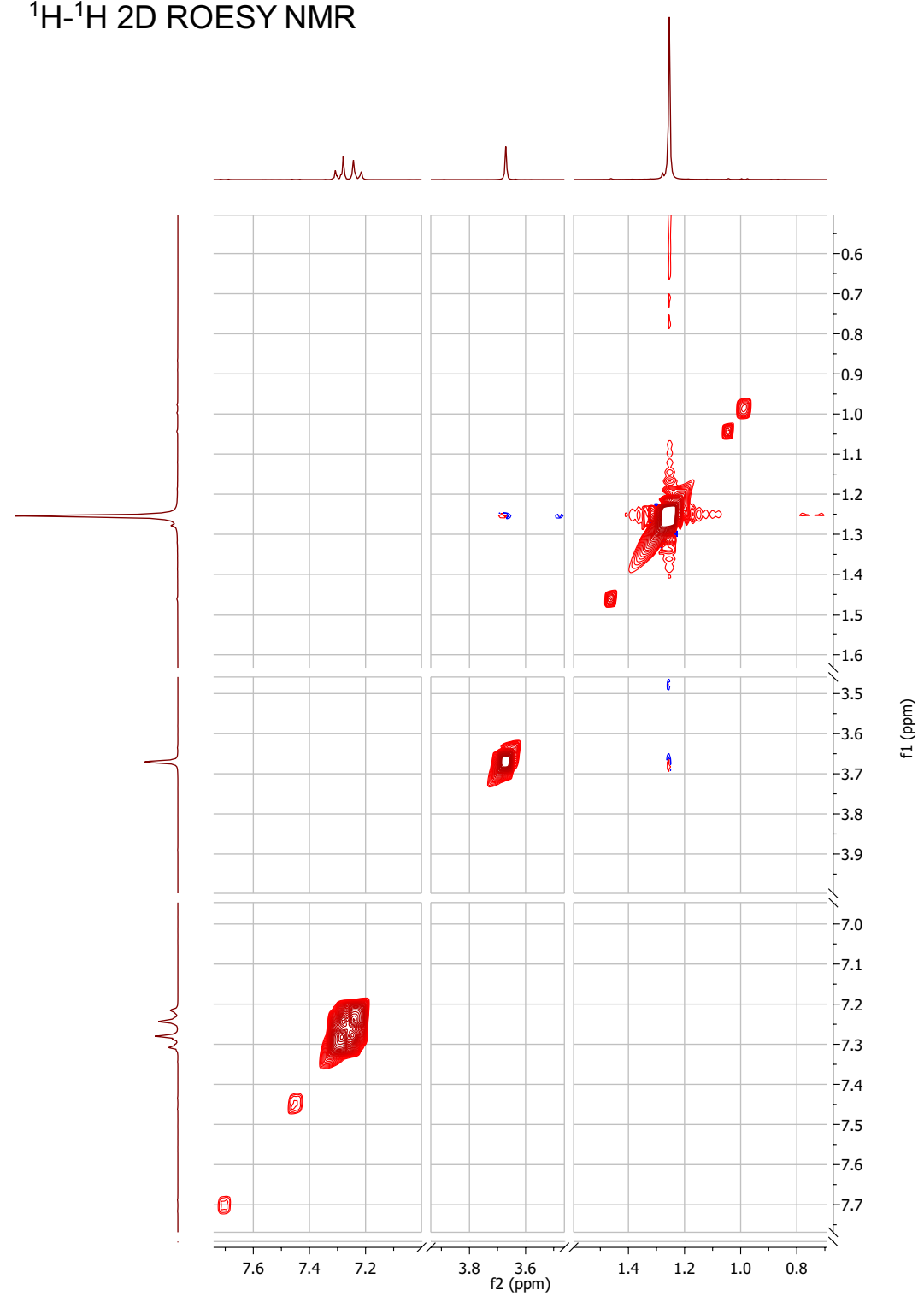
634.52  
438.59  
376.44  
313.12



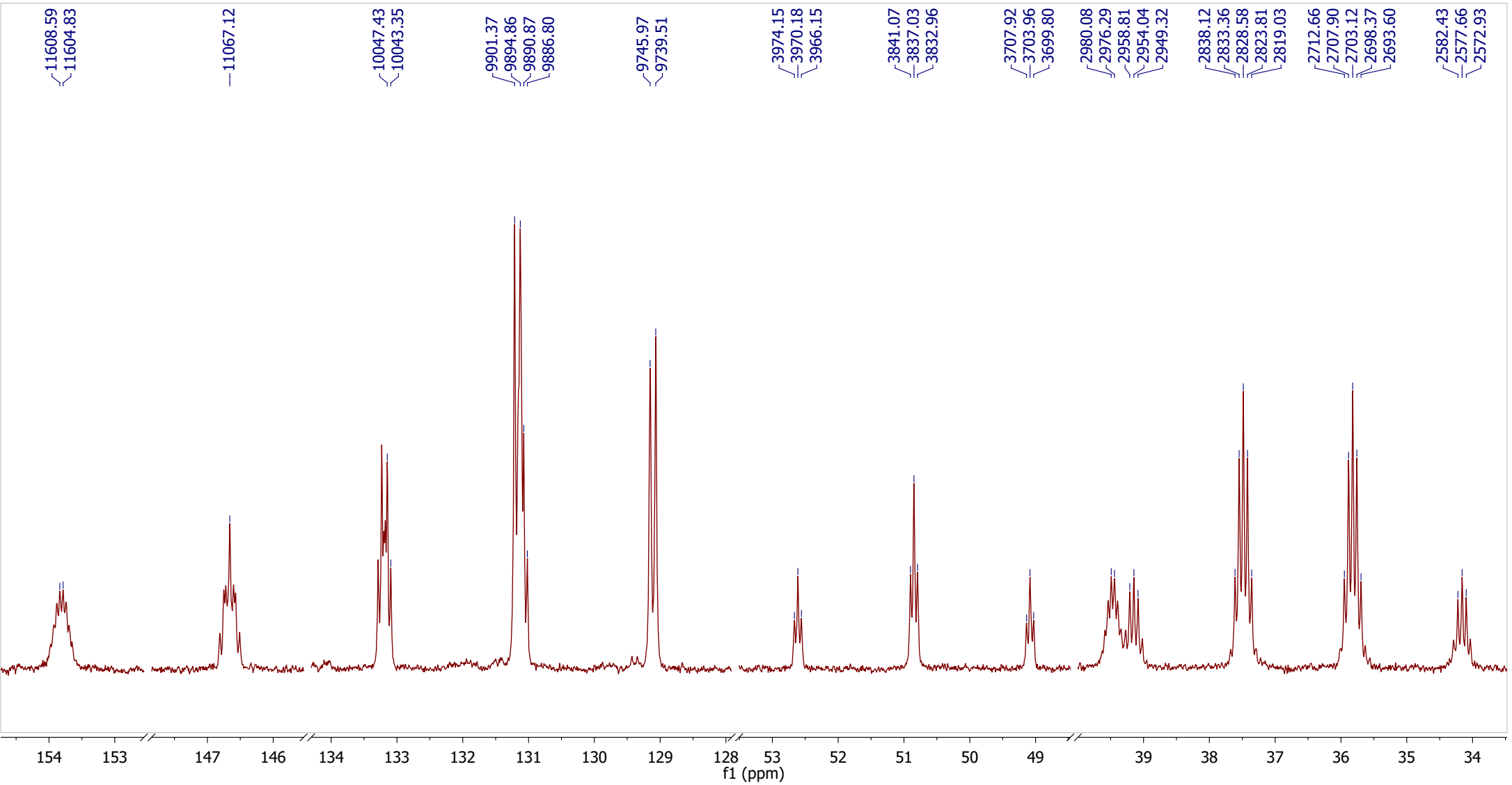
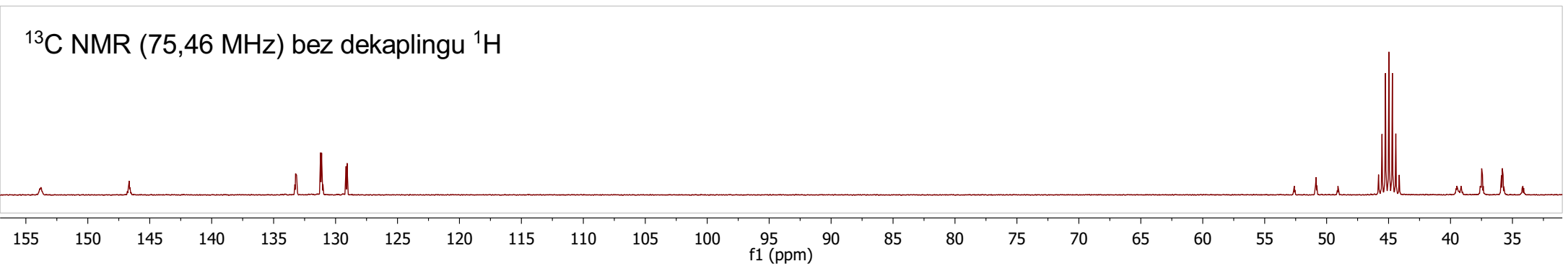
$^1\text{H}$ - $^1\text{H}$  g-COSY NMR



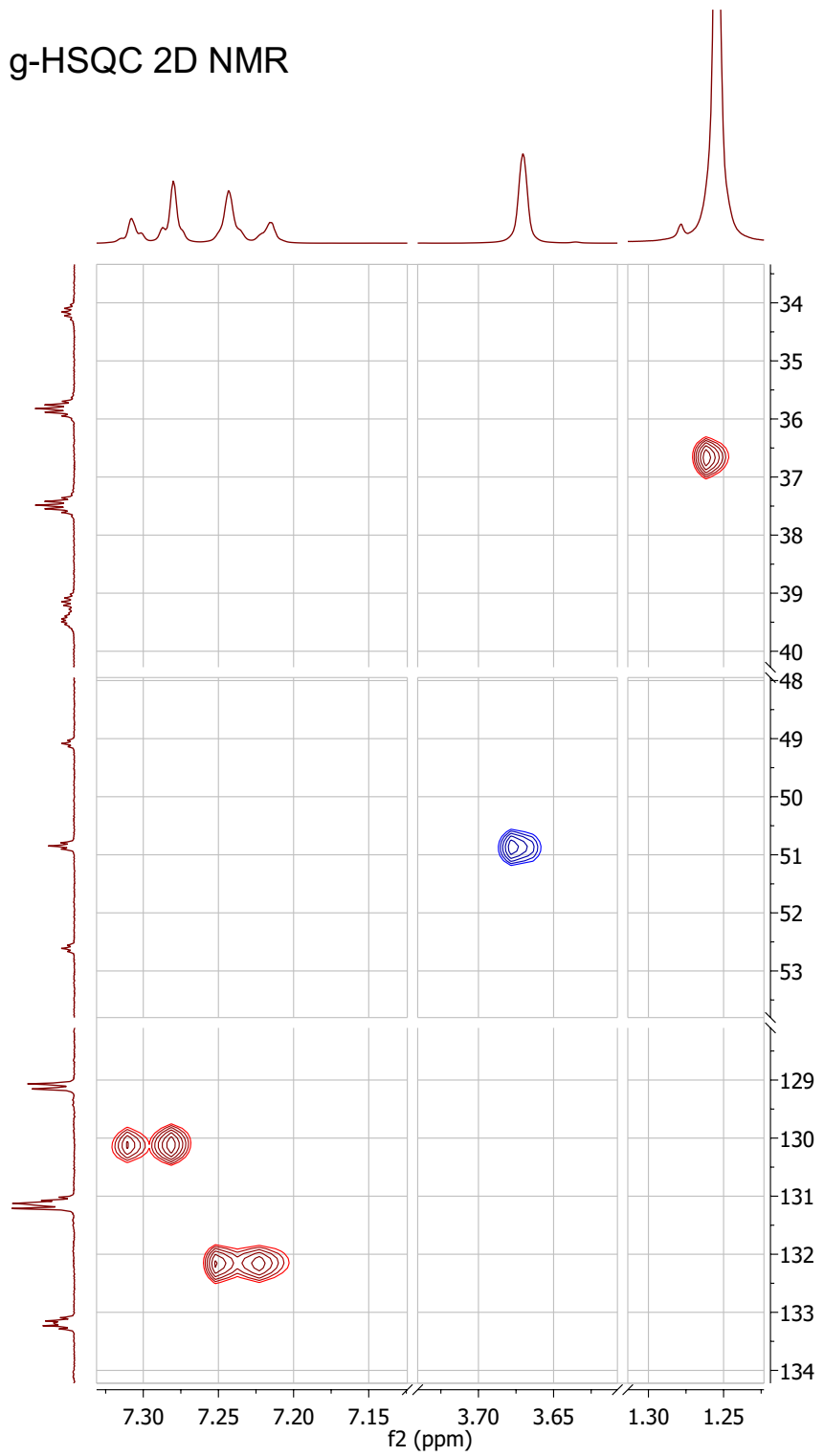
$^1\text{H}$ - $^1\text{H}$  2D ROESY NMR



$^{13}\text{C}$  NMR (75,46 MHz) bez dekaplingu  $^1\text{H}$



$^1\text{H}\{-^{13}\text{C}\}$  g-HSQC 2D NMR



$^1\text{H}\{-^{13}\text{C}\}$  g-HMBC 2D NMR

