

Měření a interpretace NMR spekter

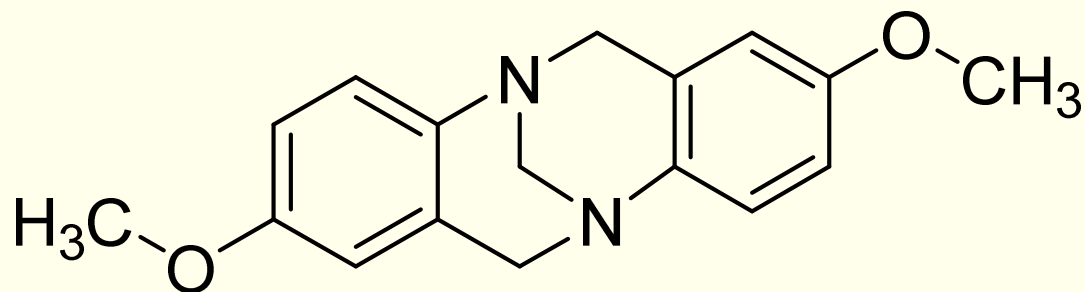
B. Dolenský

E-mail : dolenskb@vscht.cz

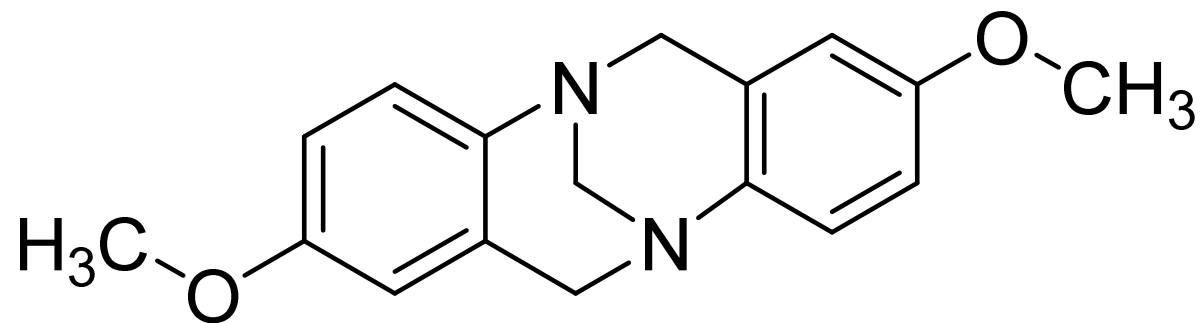
Telefon : (+420) 220 44 4110

Místnost : budova A, A28

Příklad MEOTB. Přiřadte signály ^1H a ^{13}C , a uveďte jejich charakteristiky, tj. chemický posun, multiplicitu a hodnoty interakčních konstant J_{HH} .

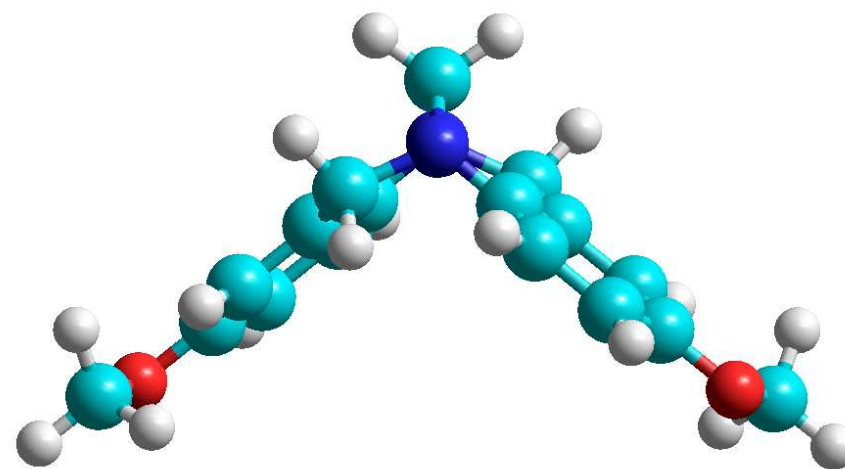
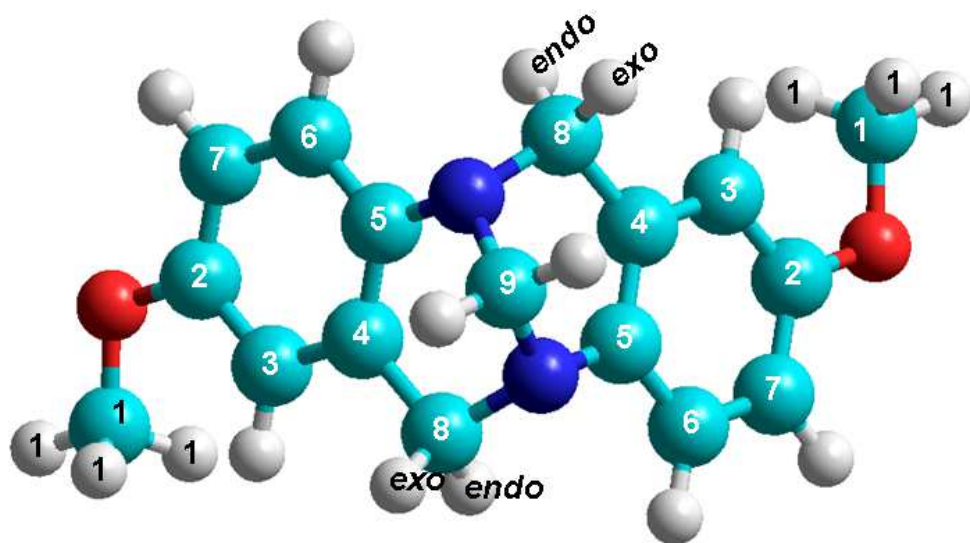


Analýza struktury molekuly



Symetrická?

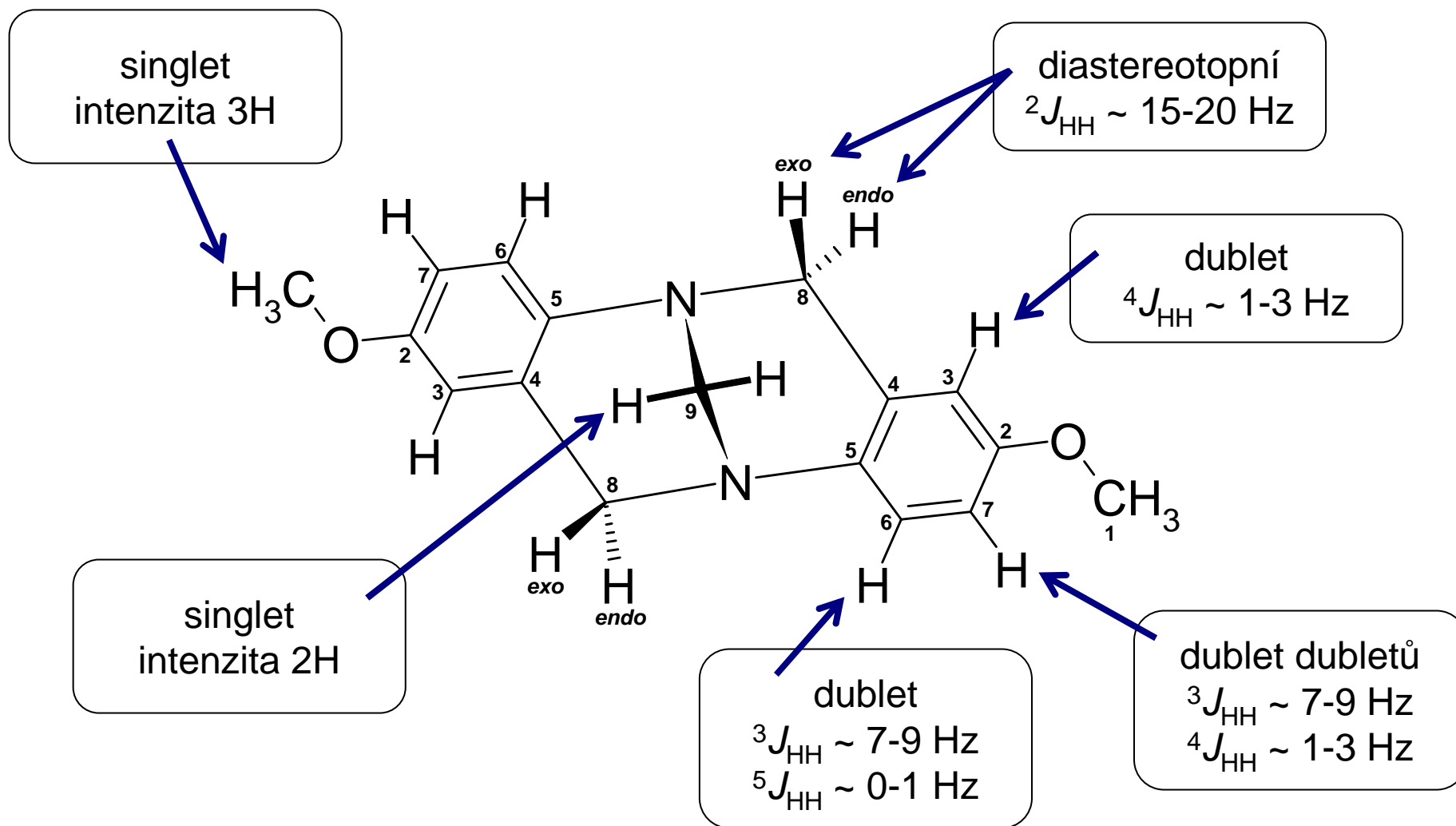
Chirální?



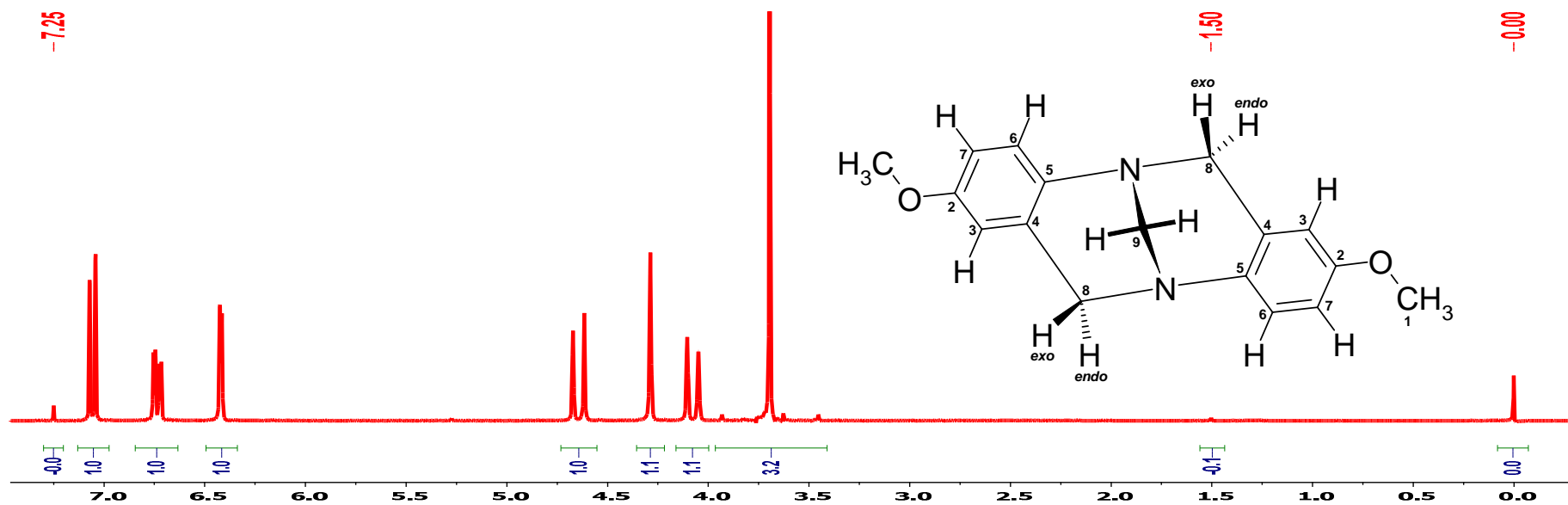
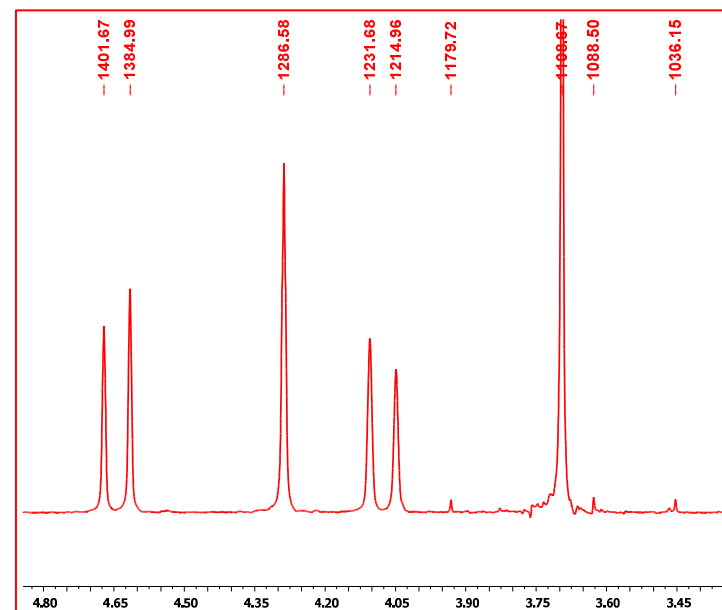
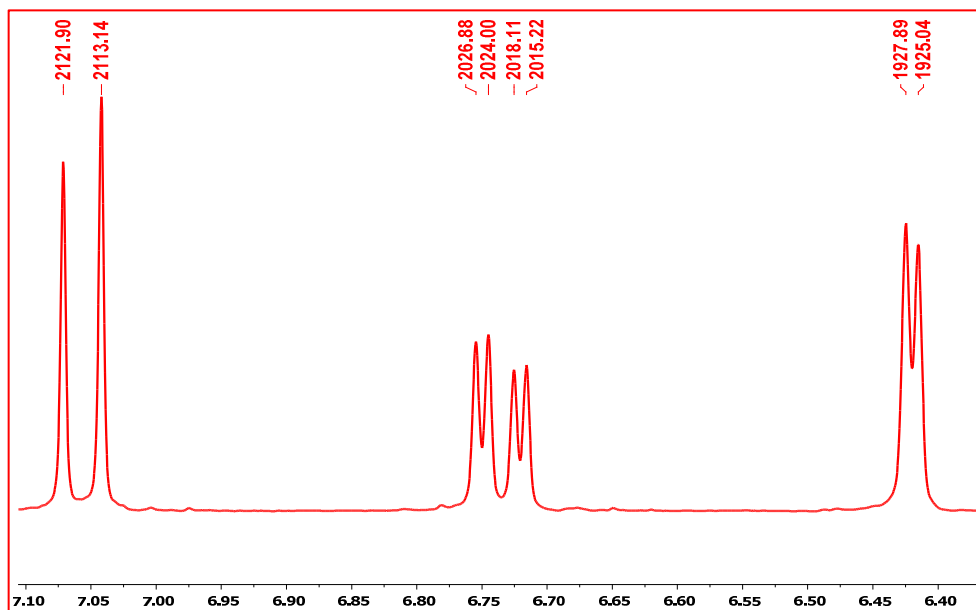
Analýza struktury molekuly

Počet signálů ^1H , multiplicita, chemický posun

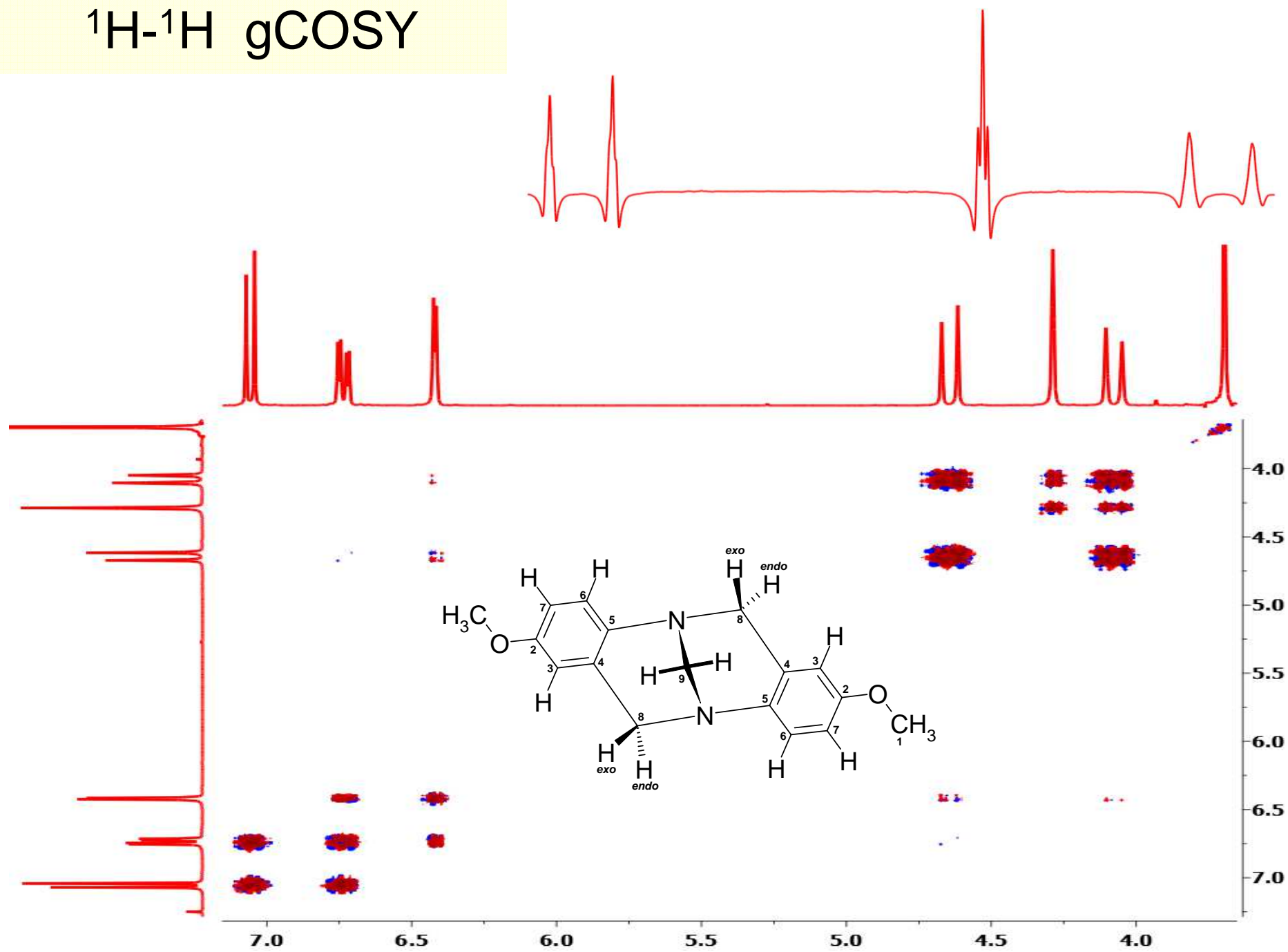
Počet signálů ^{13}C , multiplicita, chemický posun



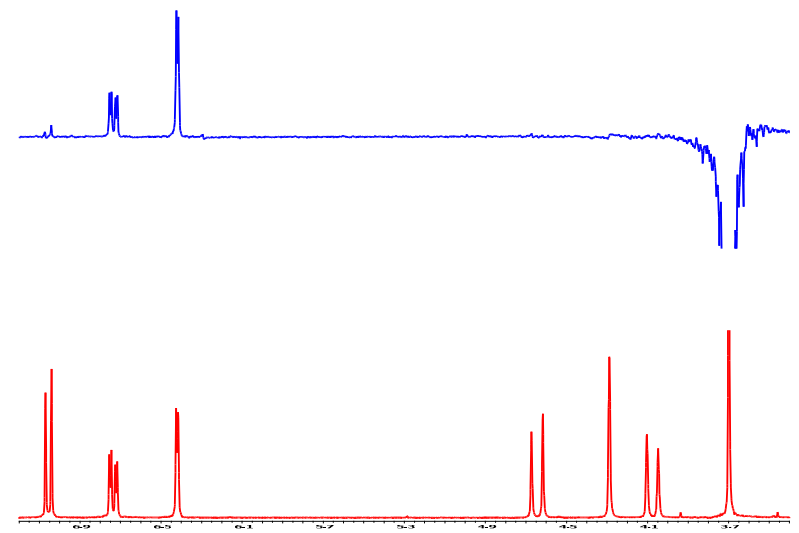
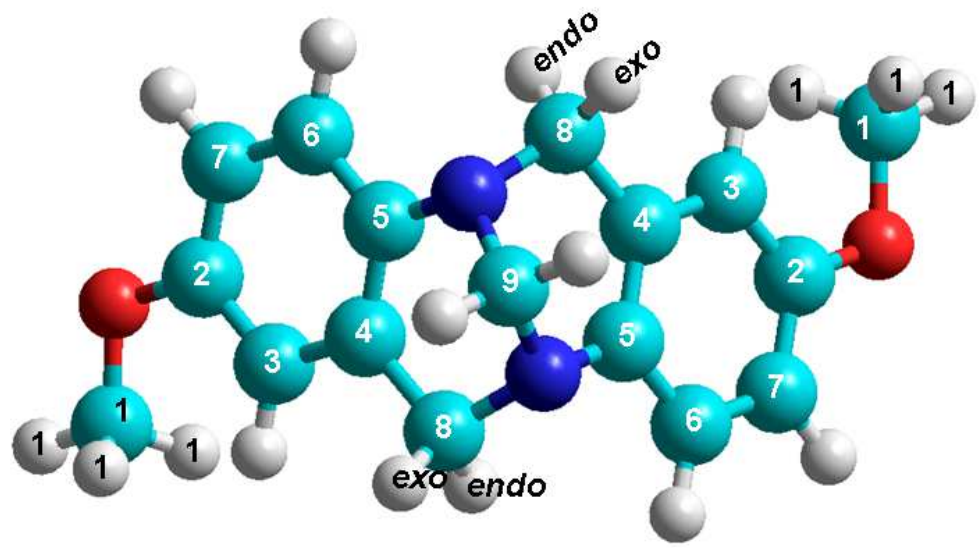
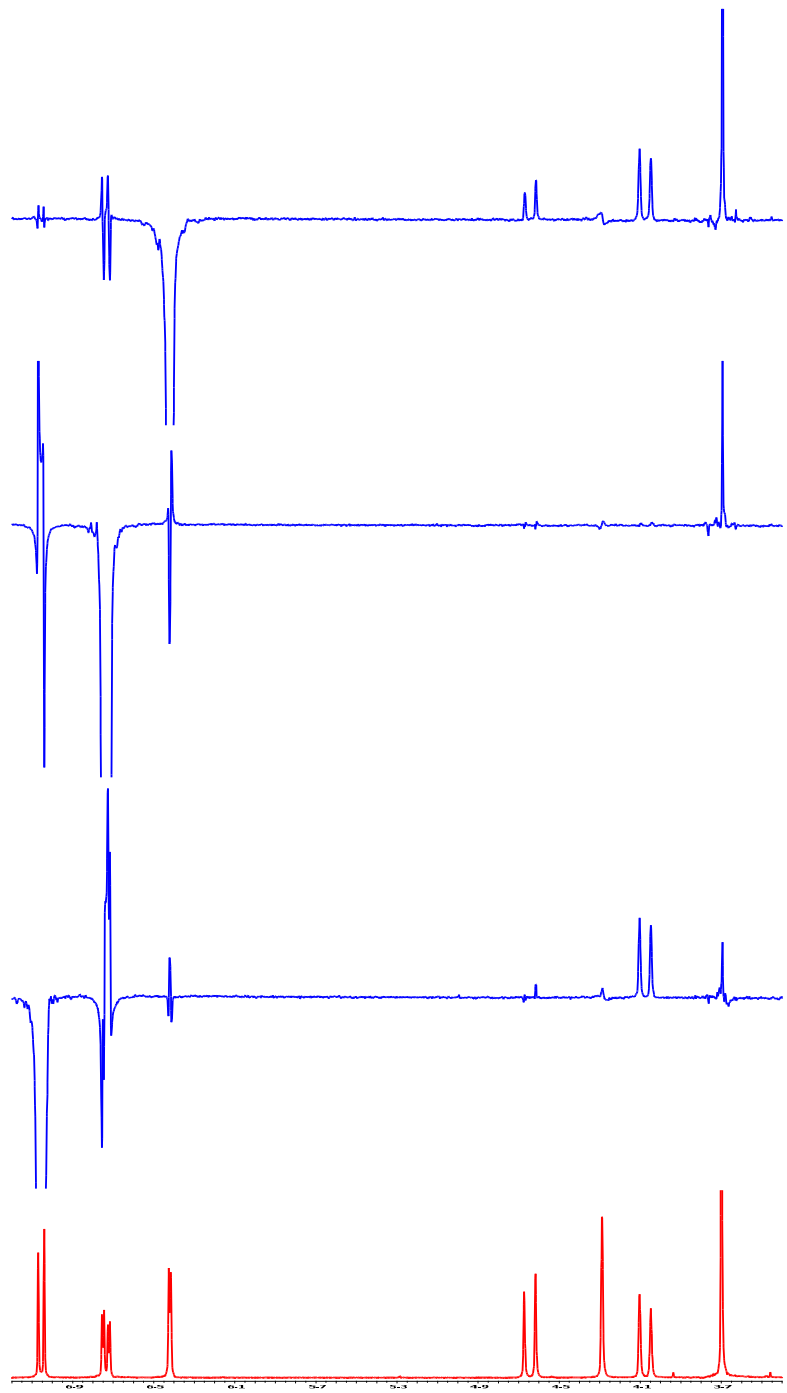
^1H NMR



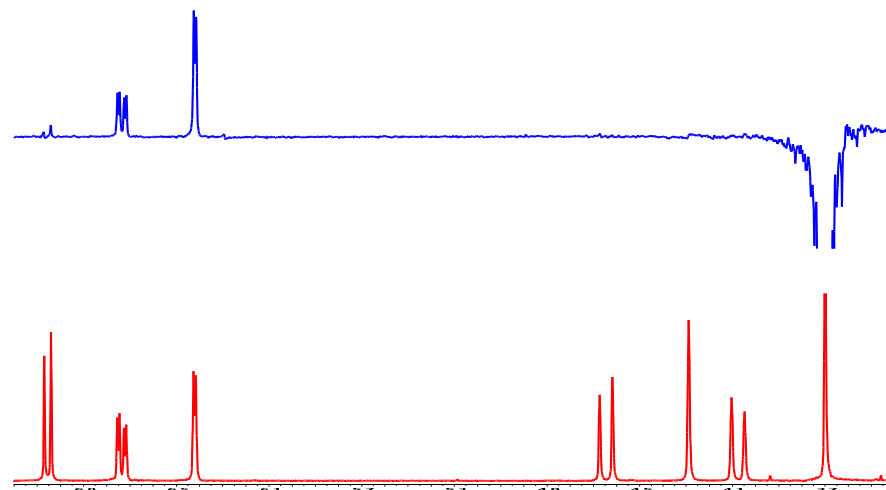
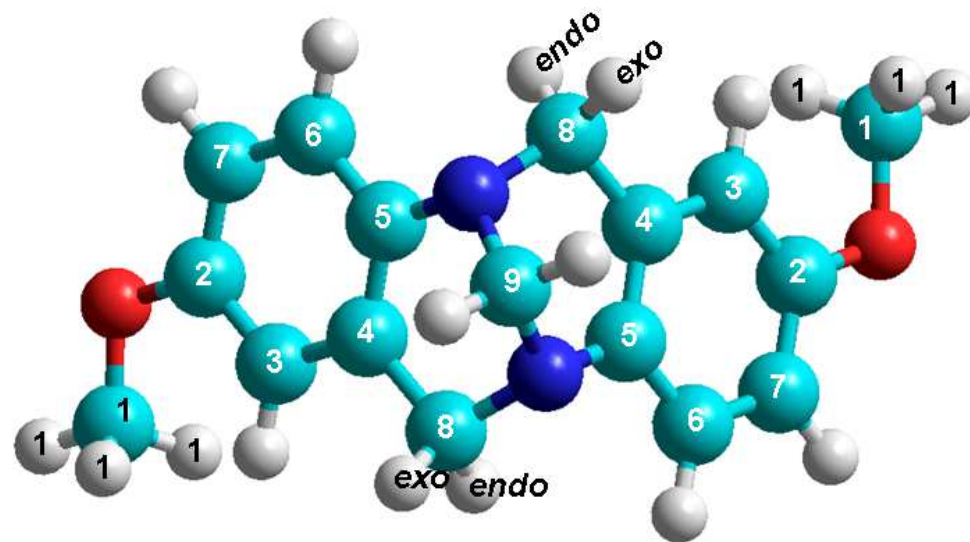
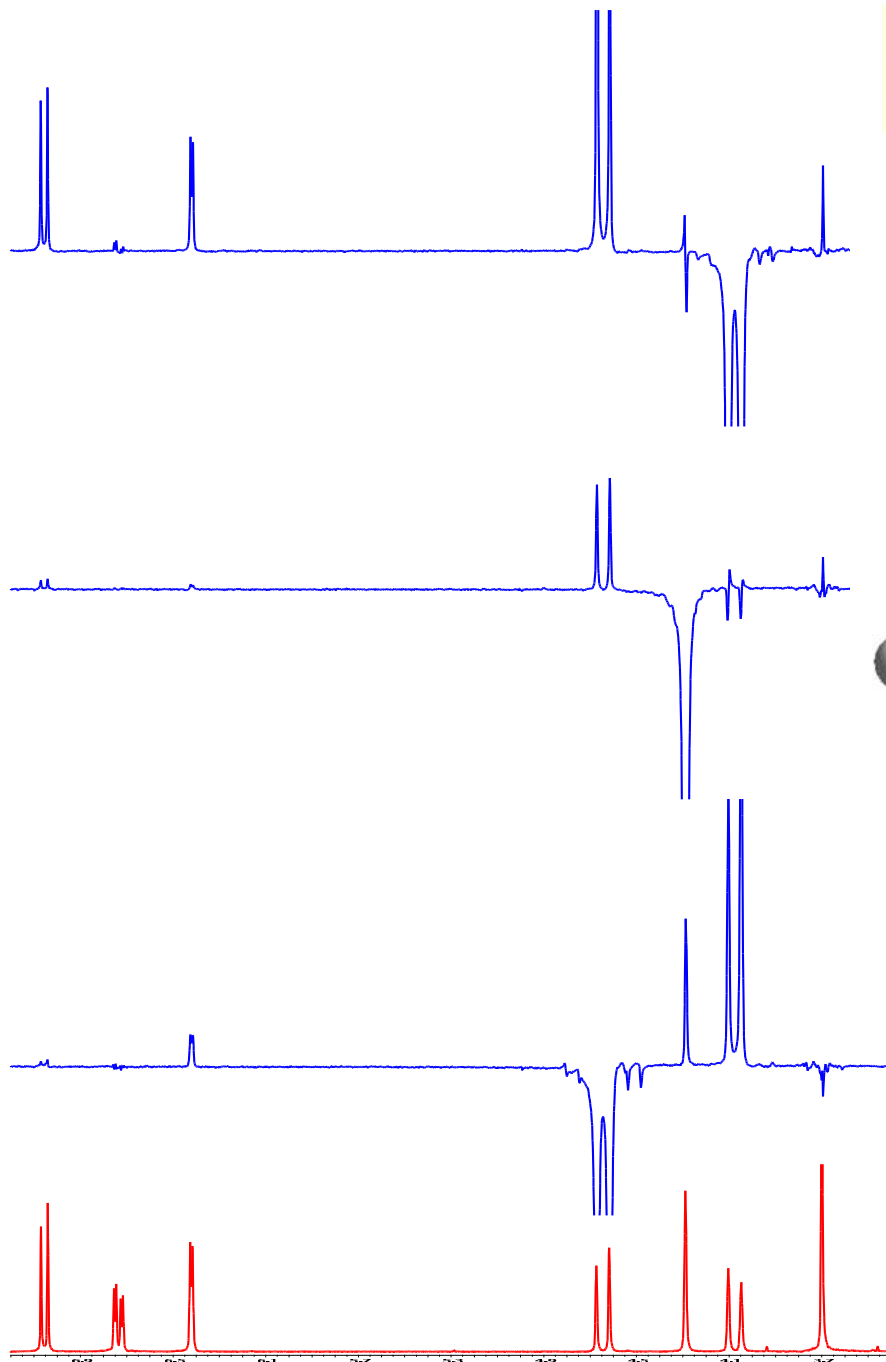
^1H - ^1H gCOSY



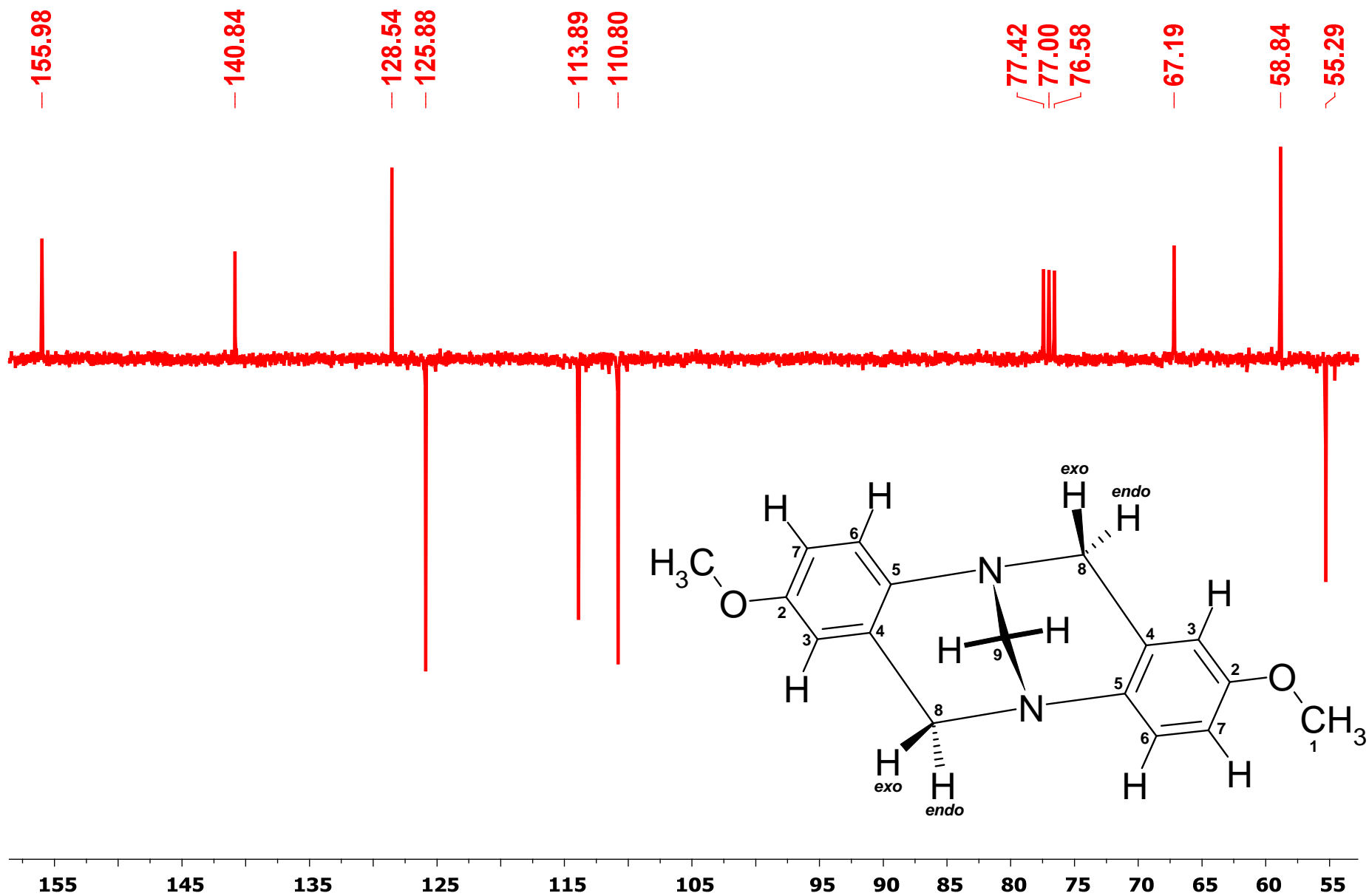
^1H - ^1H NOESY 1D NMR



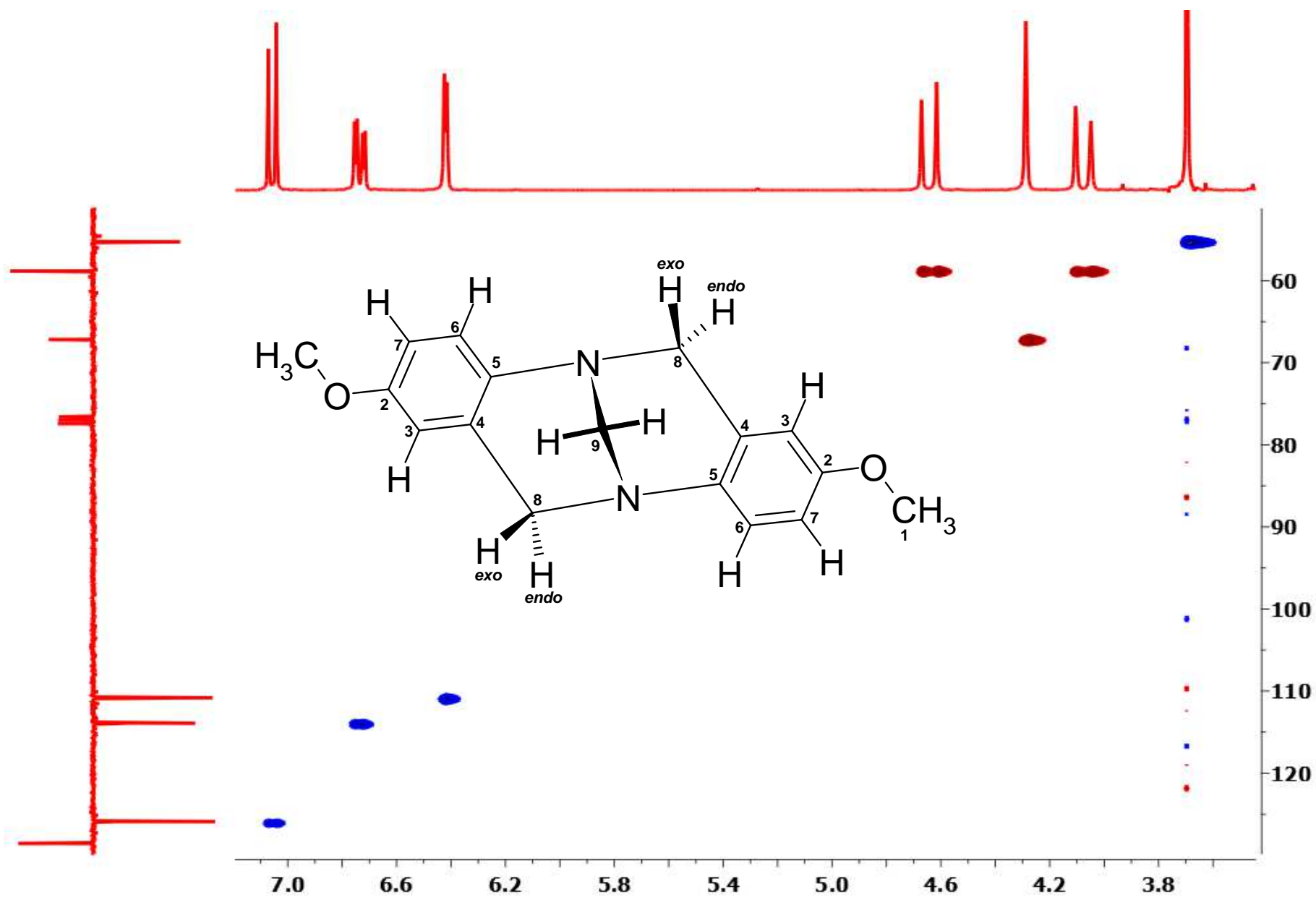
^1H - ^1H NOESY 1D NMR



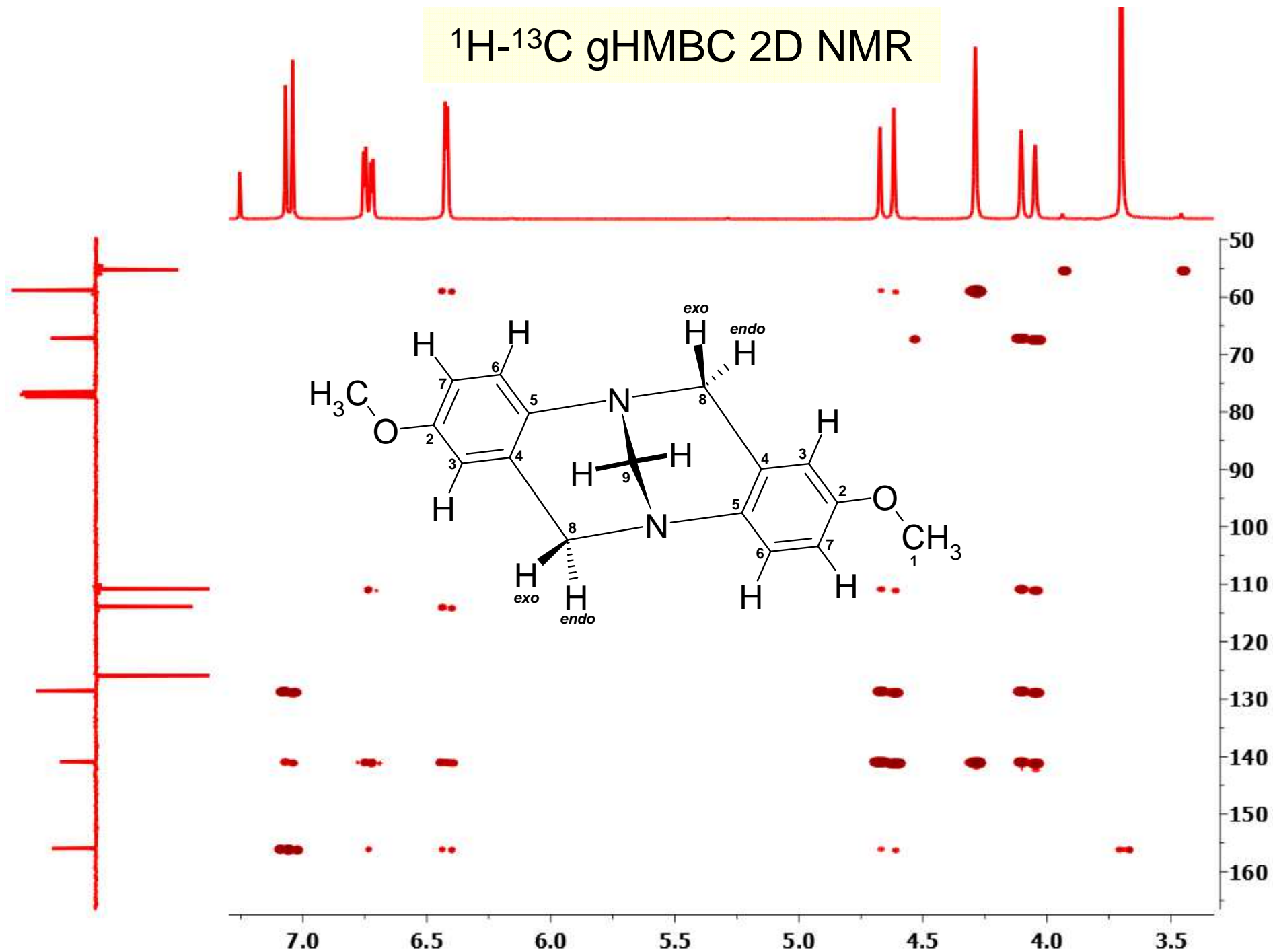
^{13}C APT NMR



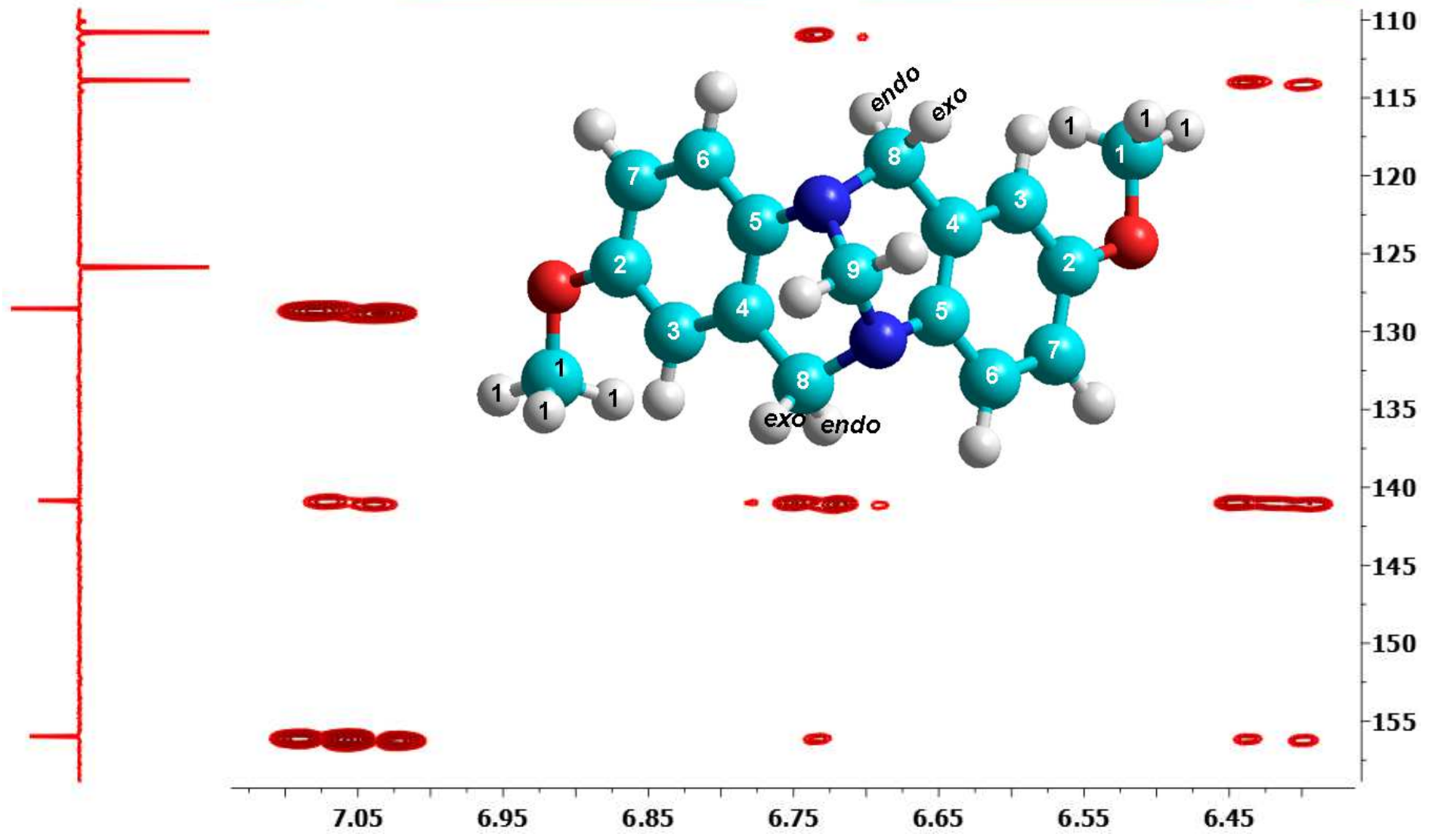
^1H - ^{13}C gHSQC 2D NMR



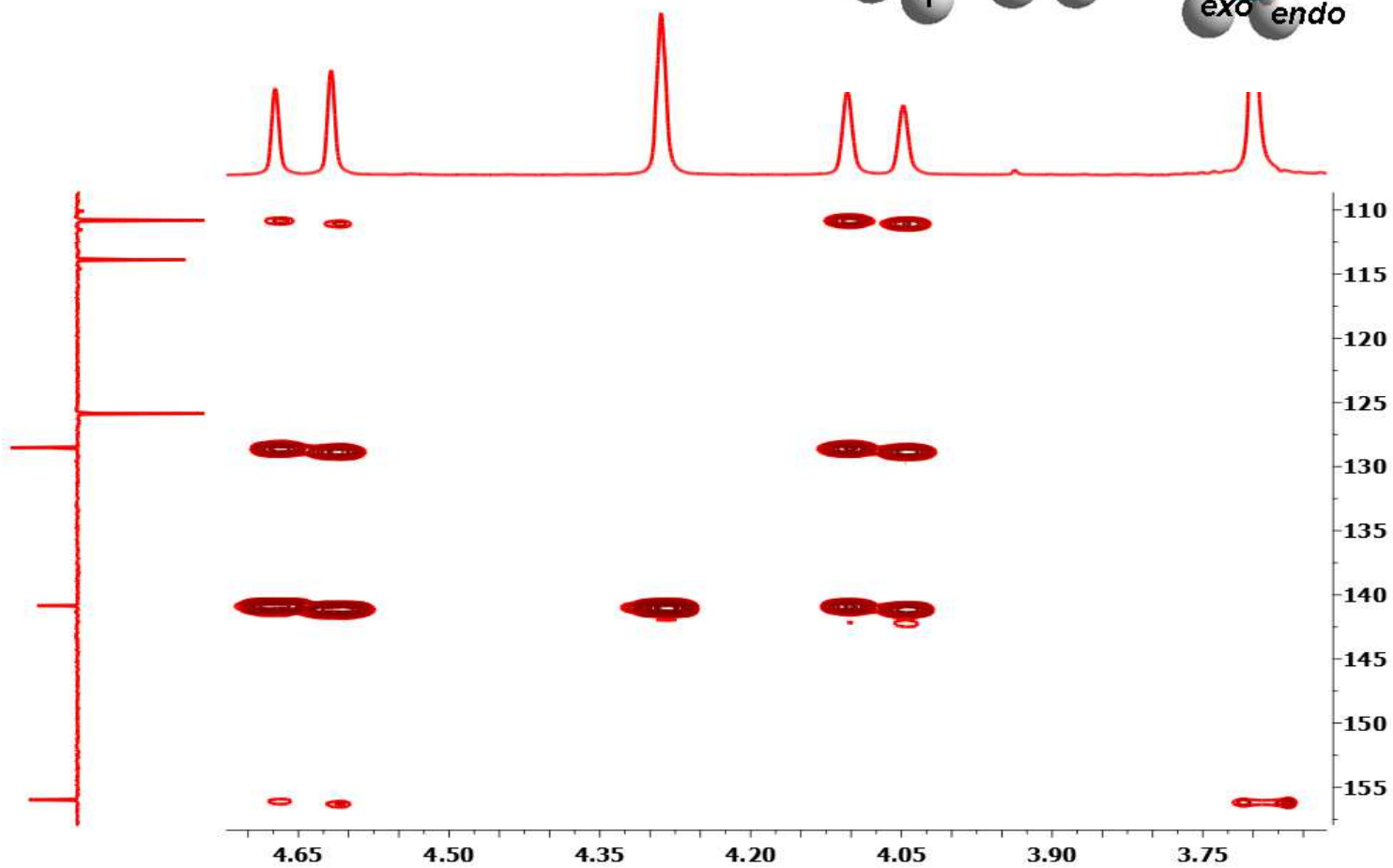
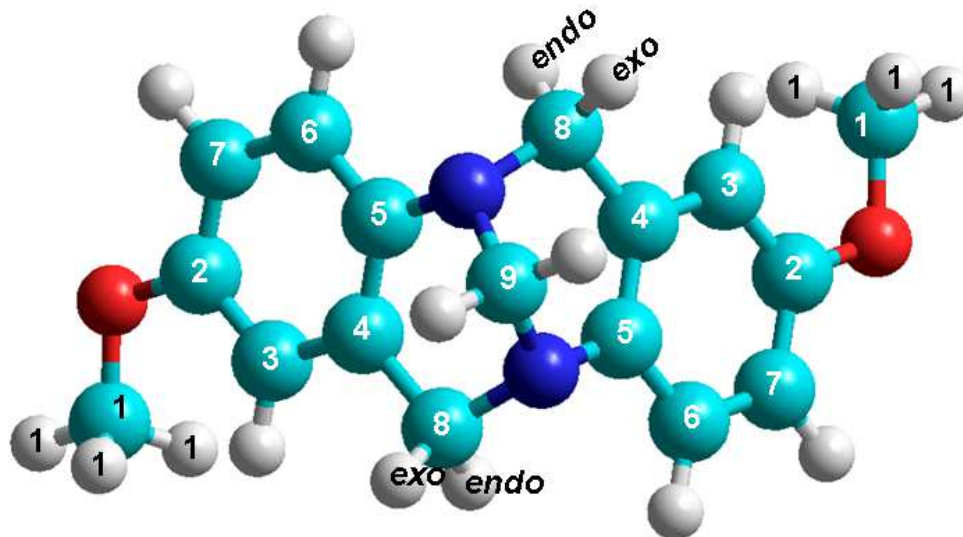
^1H - ^{13}C gHMBC 2D NMR



^1H - ^{13}C gHMBC 2D NMR



^1H - ^{13}C gHMBC 2D NMR



^1H - ^{13}C gHMBC 2D NMR

