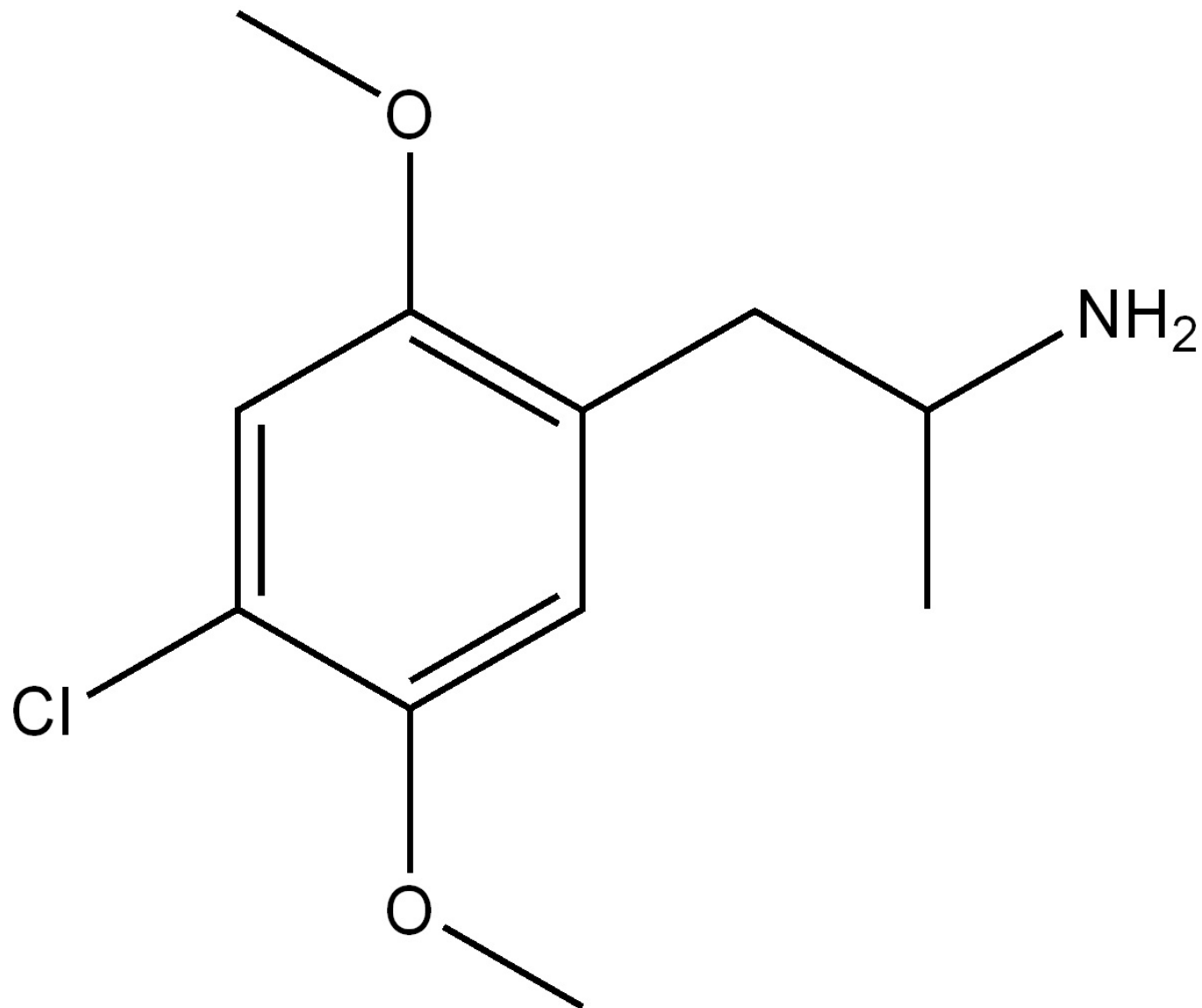


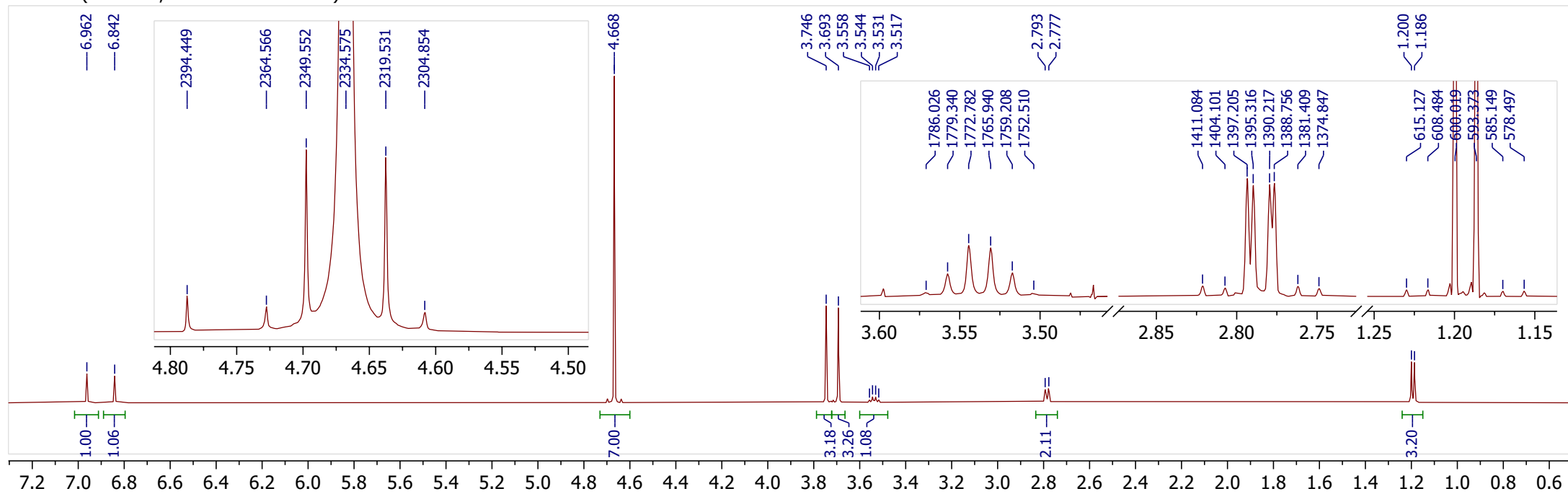
K jednotlivým atomům molekuly přiřete chemické posuny ^1H , ^{13}C , ^{15}N jader. U multipletů uveďte multiplicitu a velikost interakčních konstant.

Látka je měřena ve formě hydrochloridu.

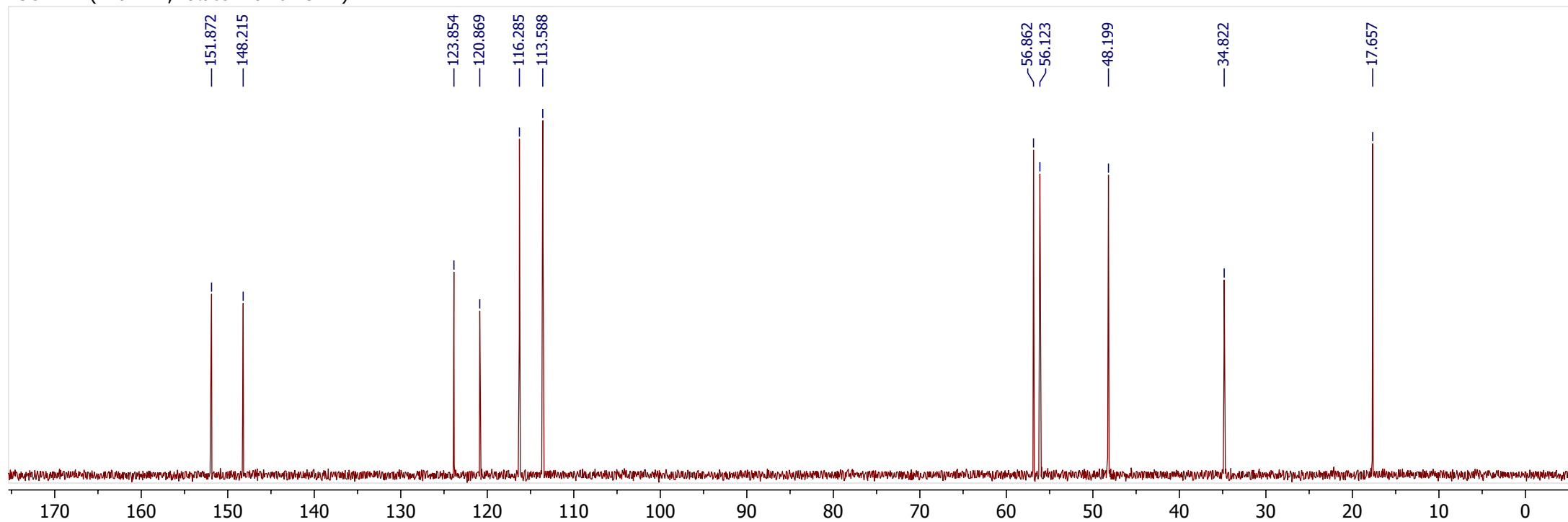
Vaše jméno: _____ Dnešní datum: _____



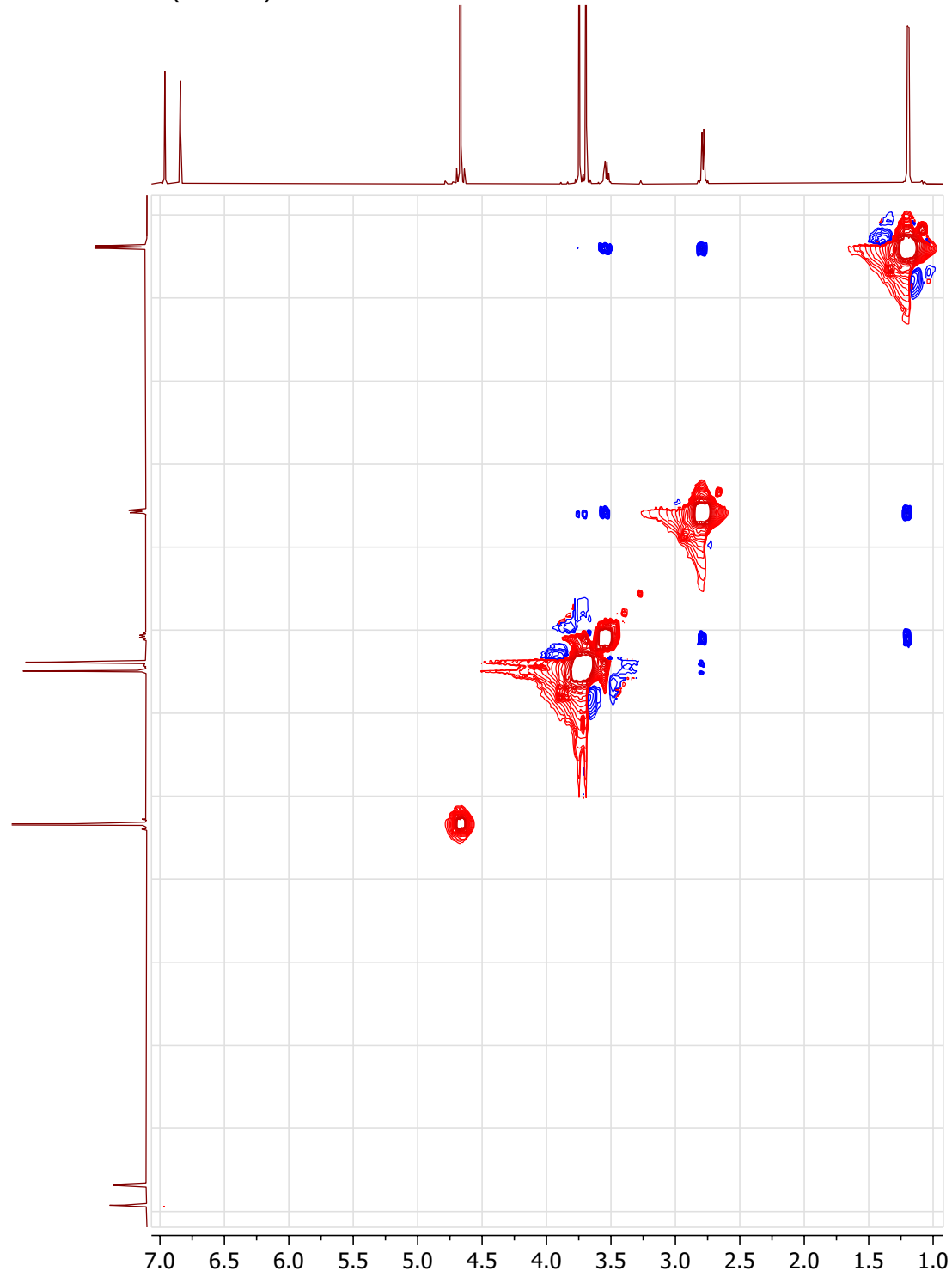
¹H NMR (500 MHz, rotace vzorku 15 Hz)



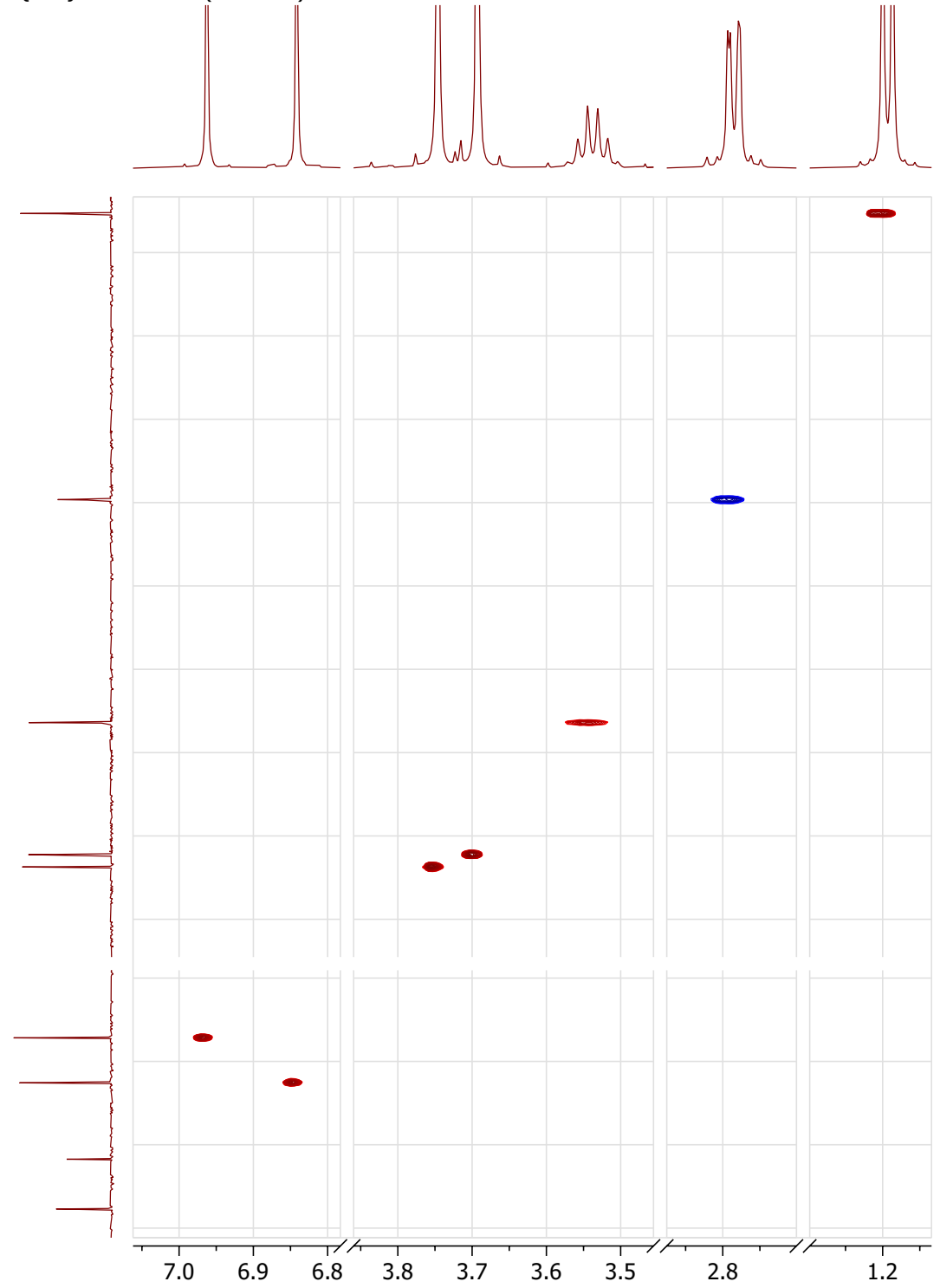
¹³C NMR (126 MHz, rotace vzorku 15 Hz)



^1H ROESY NMR (500 MHz)



$^1\text{H}\{^{13}\text{C}\}$ HMBC NMR (500 MHz)



$1\text{H}\{^{13}\text{C}\}$ HMBC NMR (500 MHz)

$1\text{H}\{^{15}\text{N}\}$ HMBC NMR (500 MHz)

