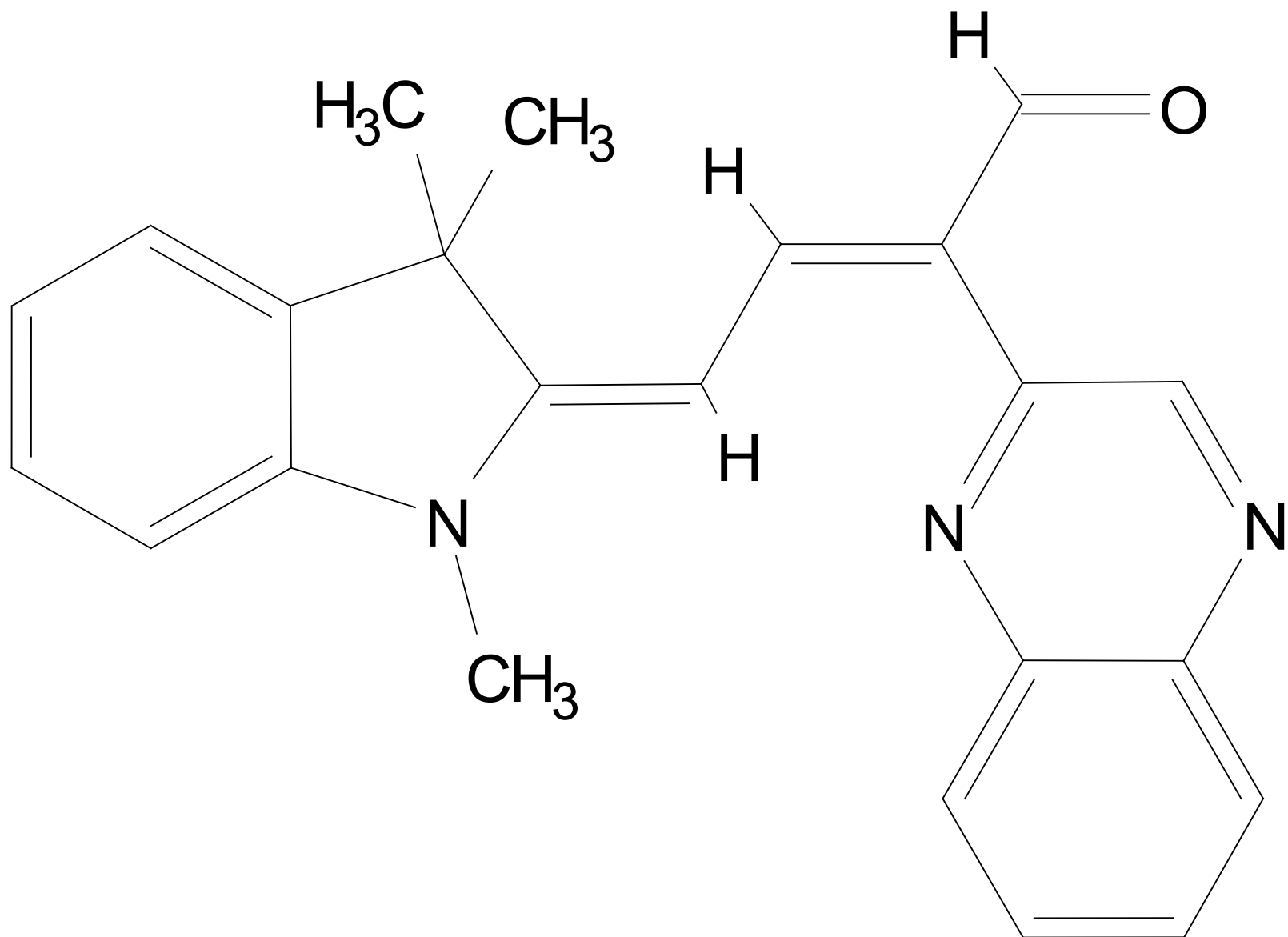


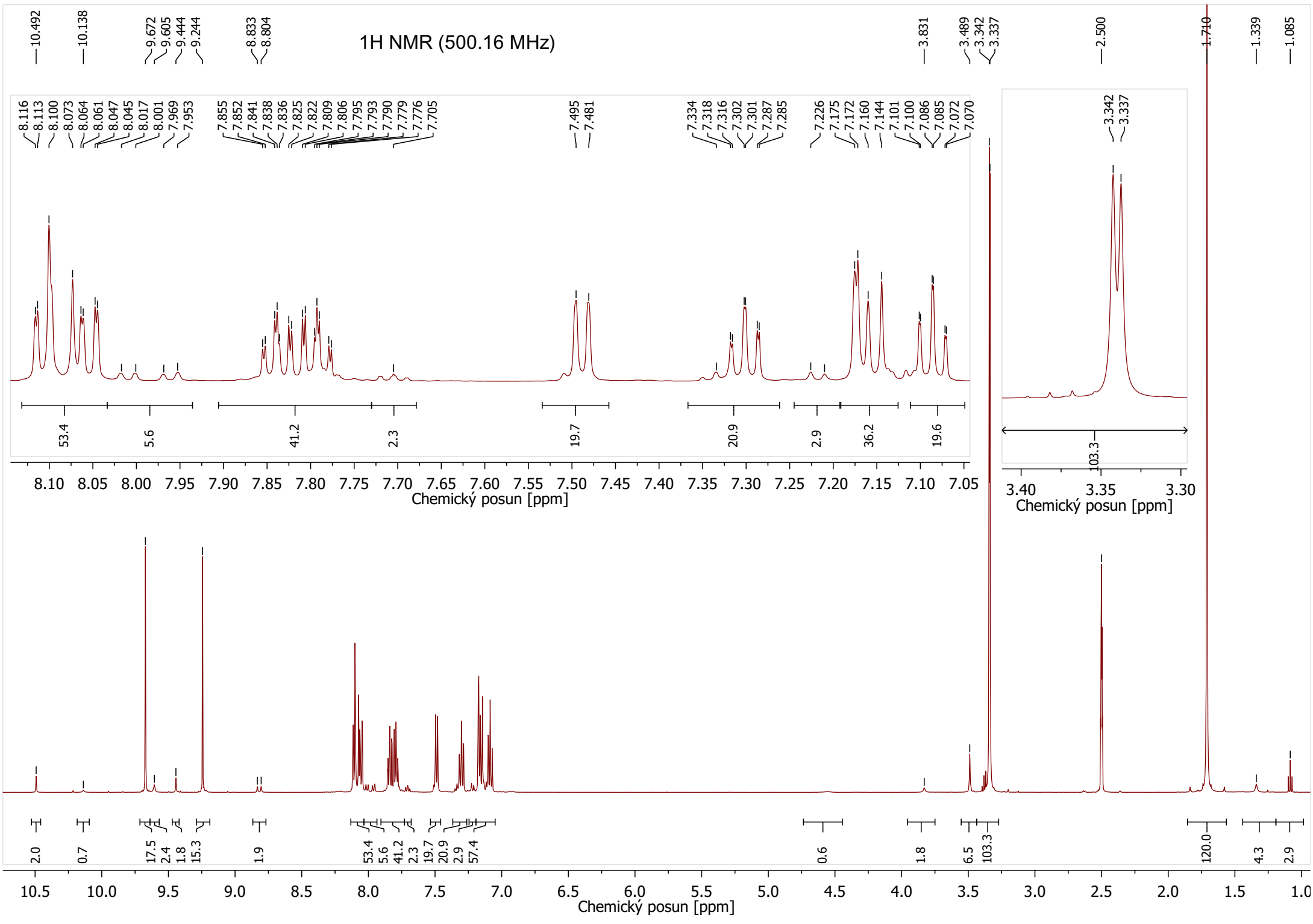
Připište chemické posuny ^1H a ^{13}C do struktury k odpovídajícím atomům. U signálů ^1H uveďte multiplicitu a interakční konstanty.

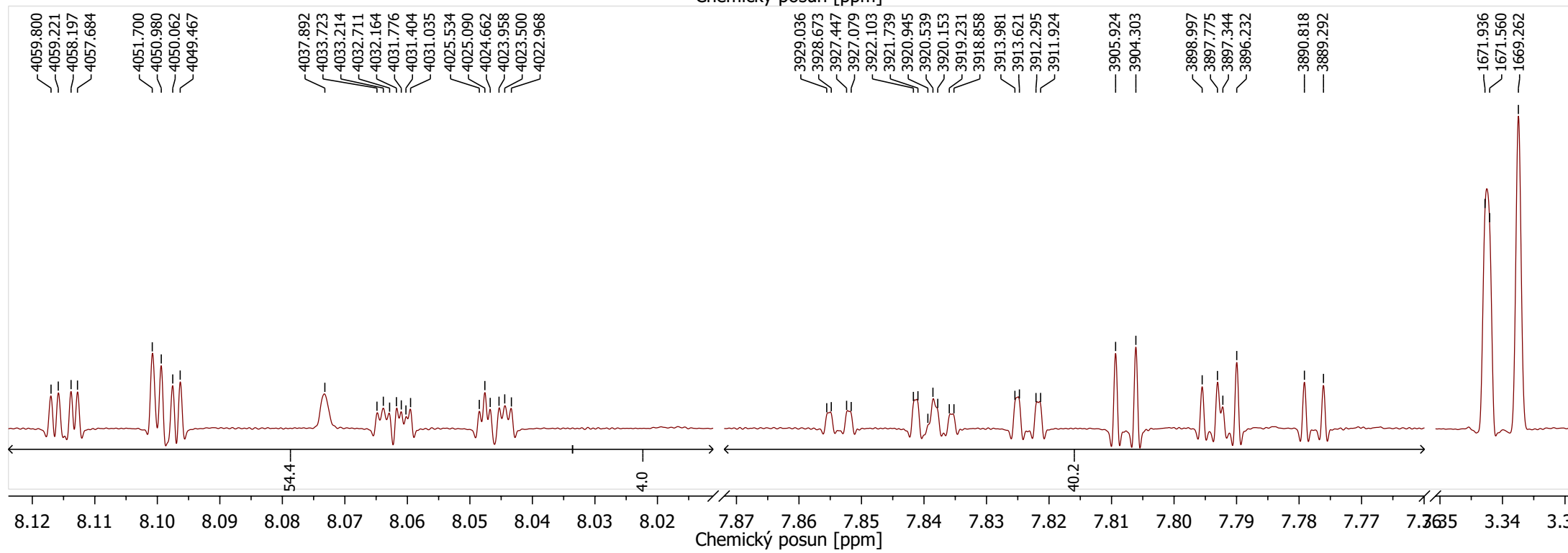
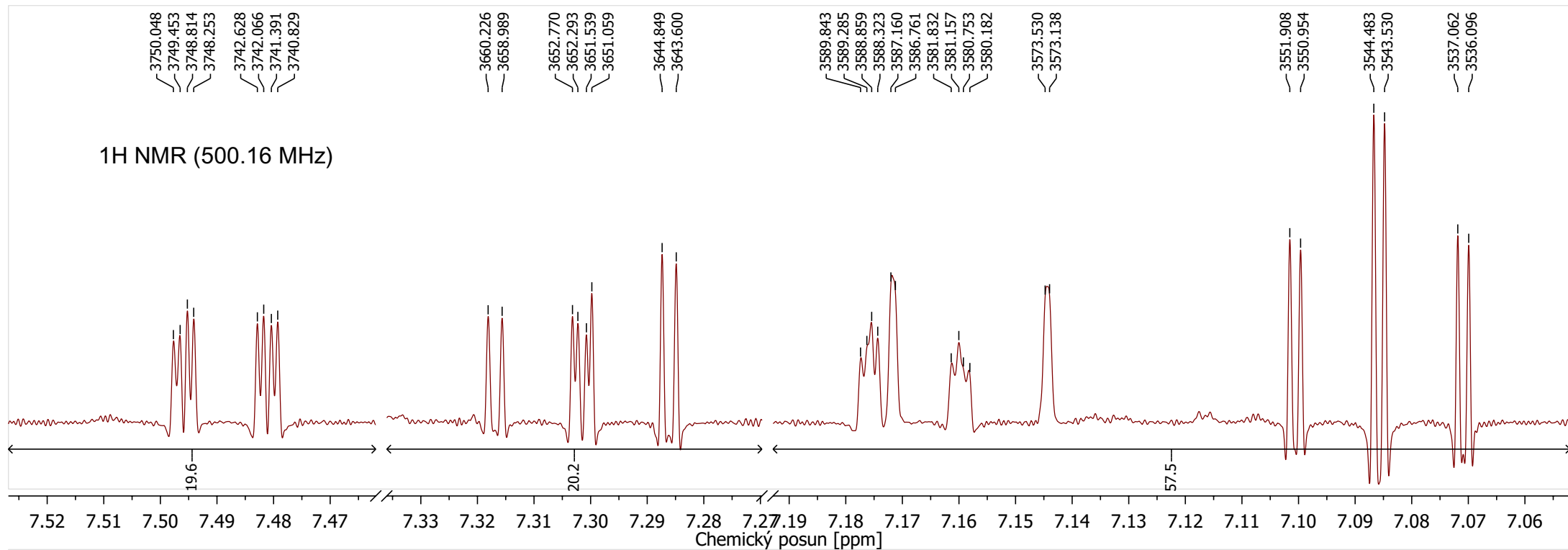
Jméno:

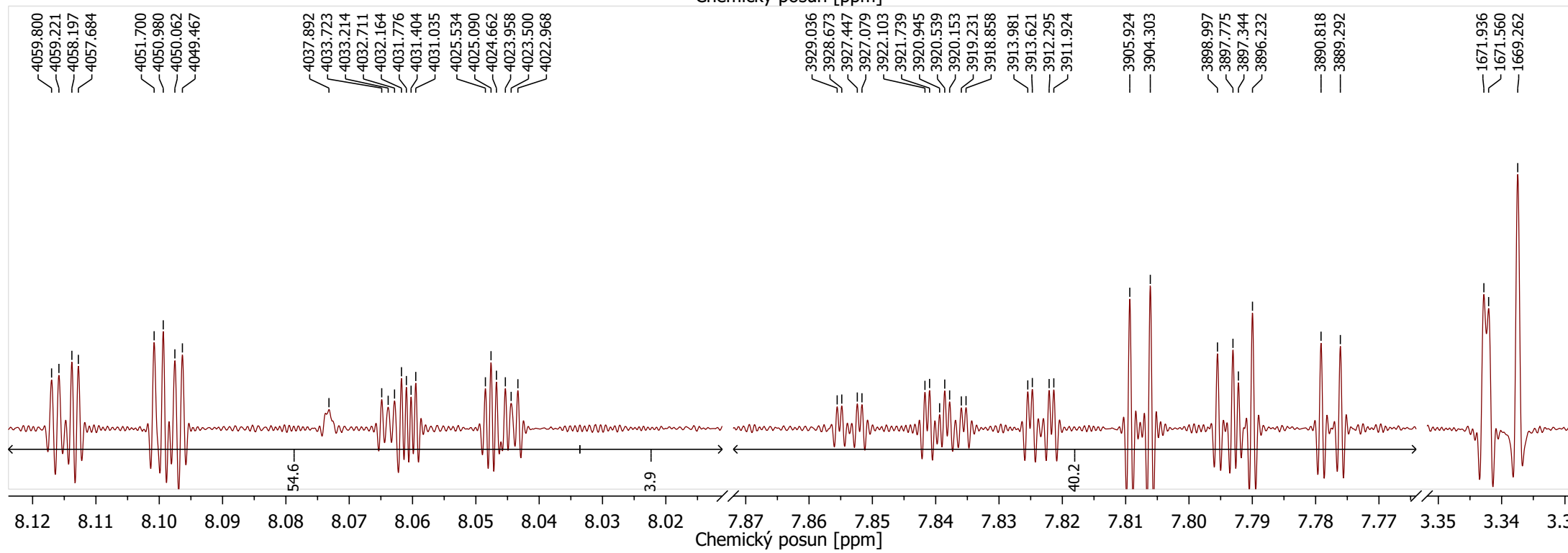
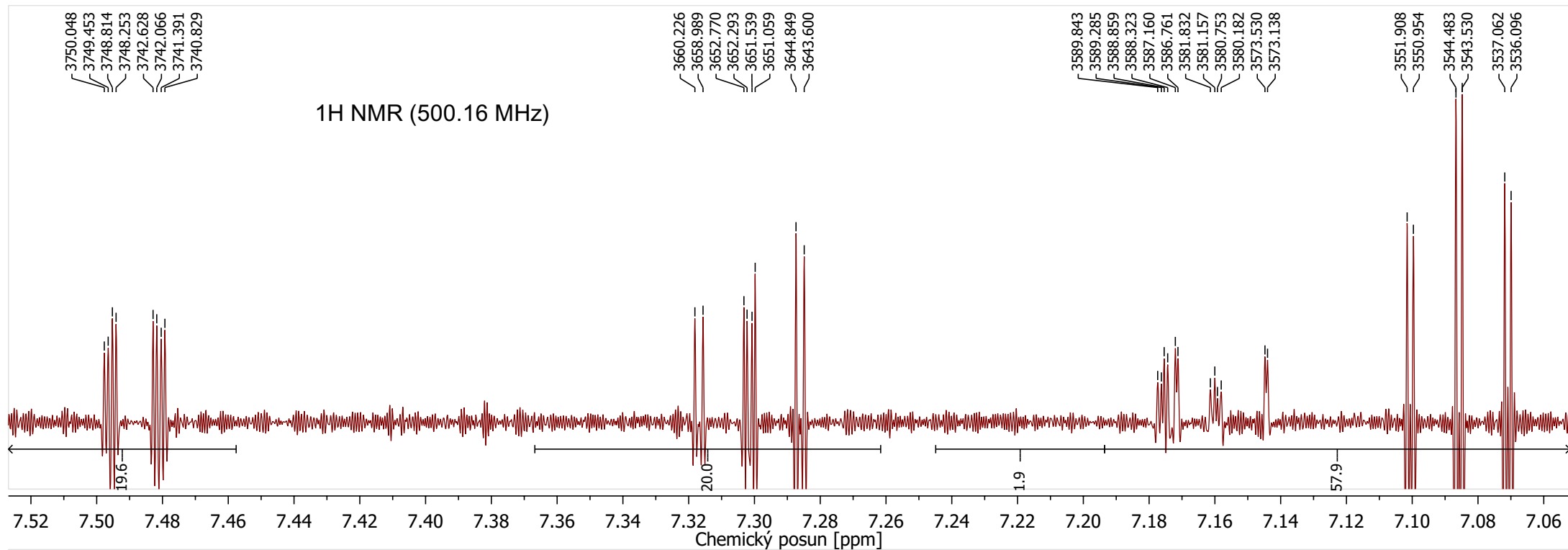
Datum:

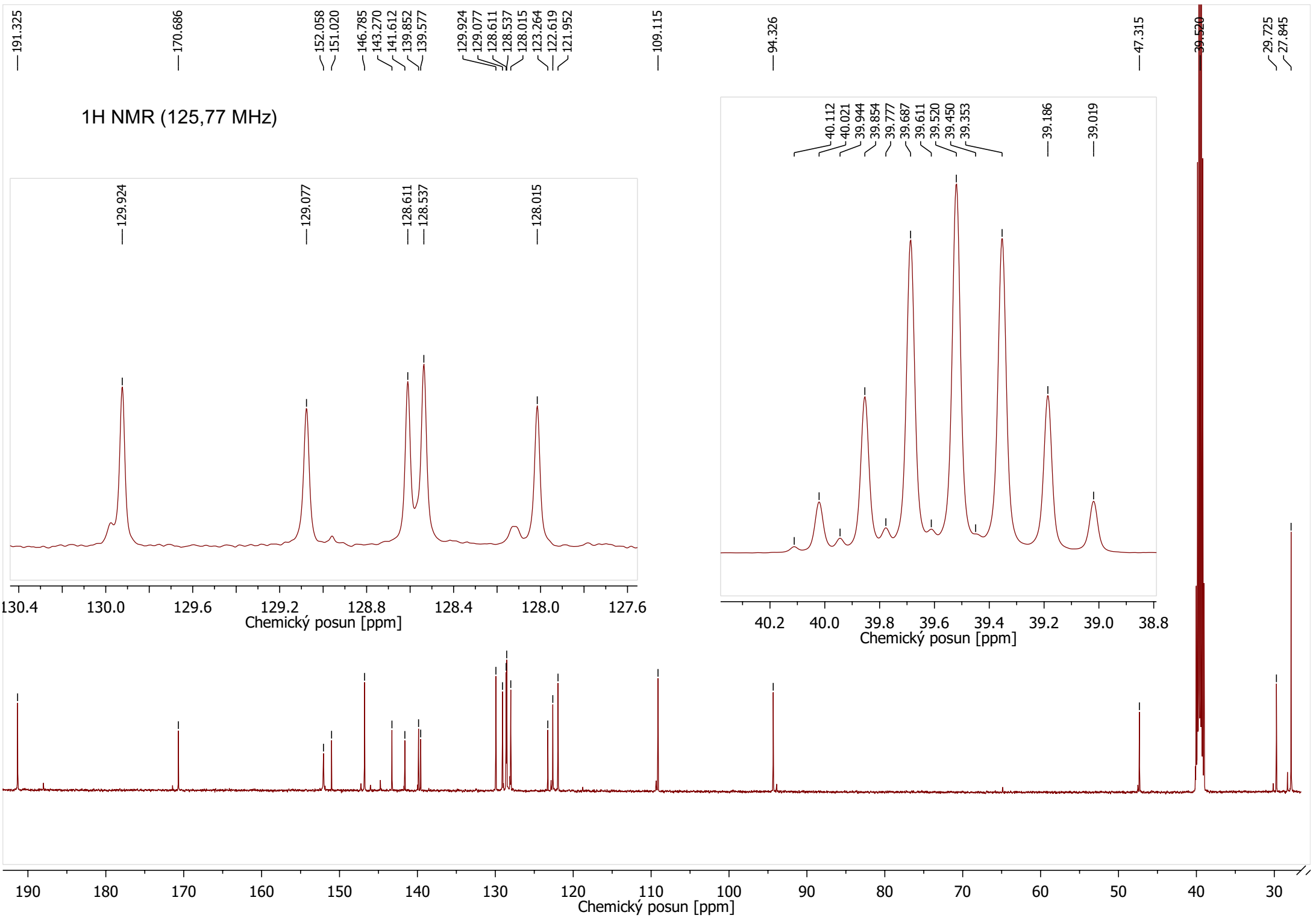


1H NMR (500.16 MHz)

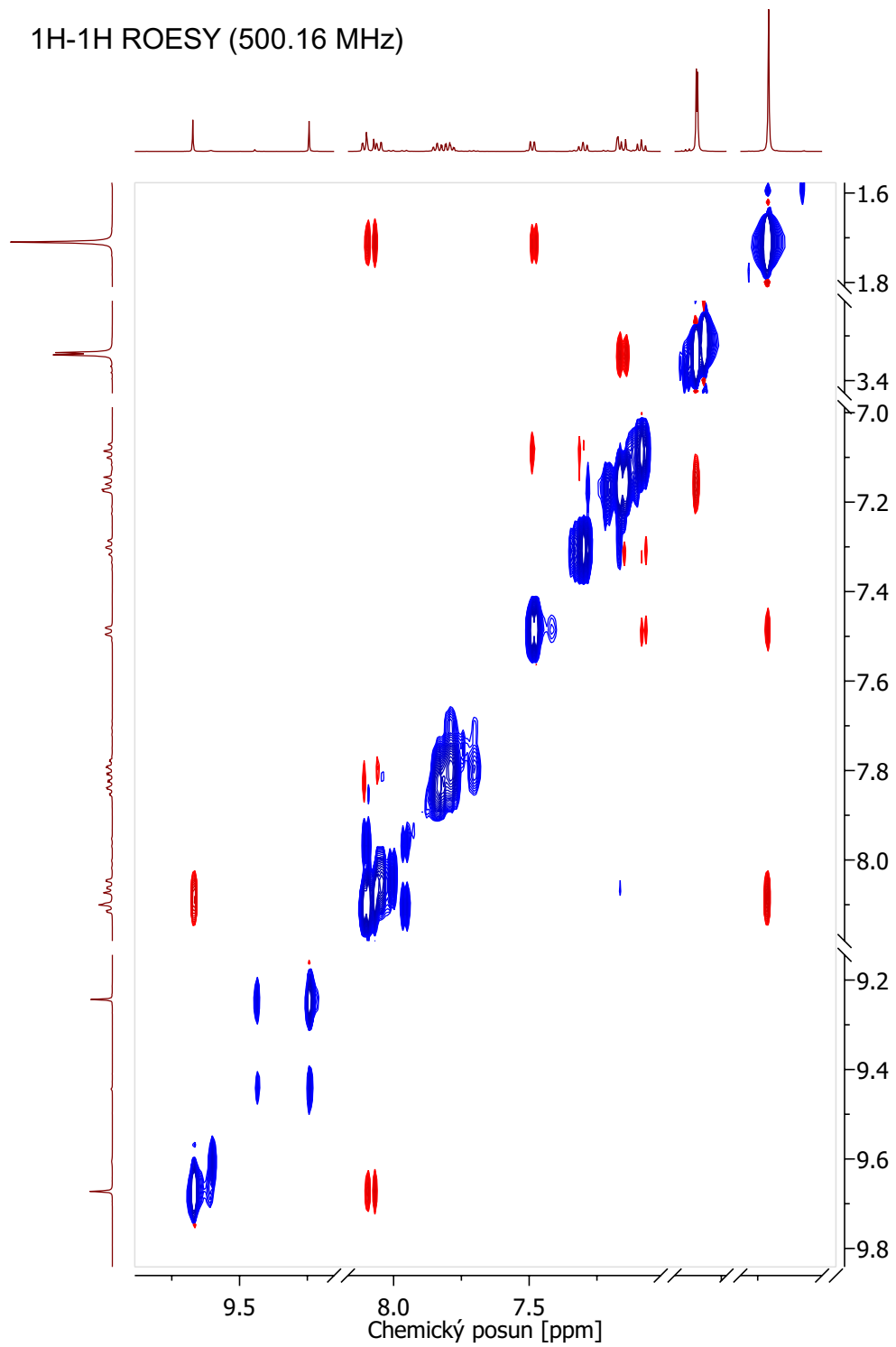




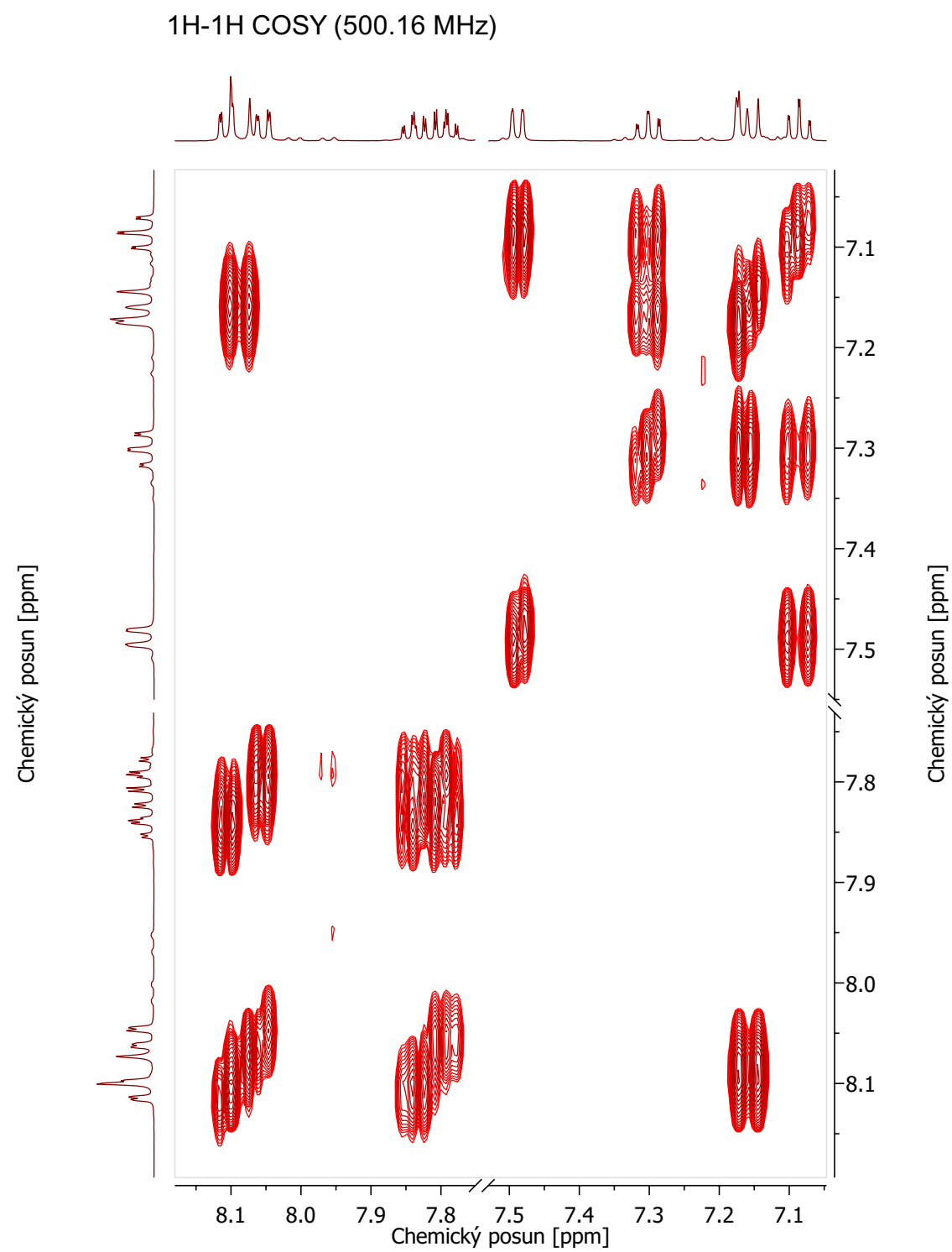


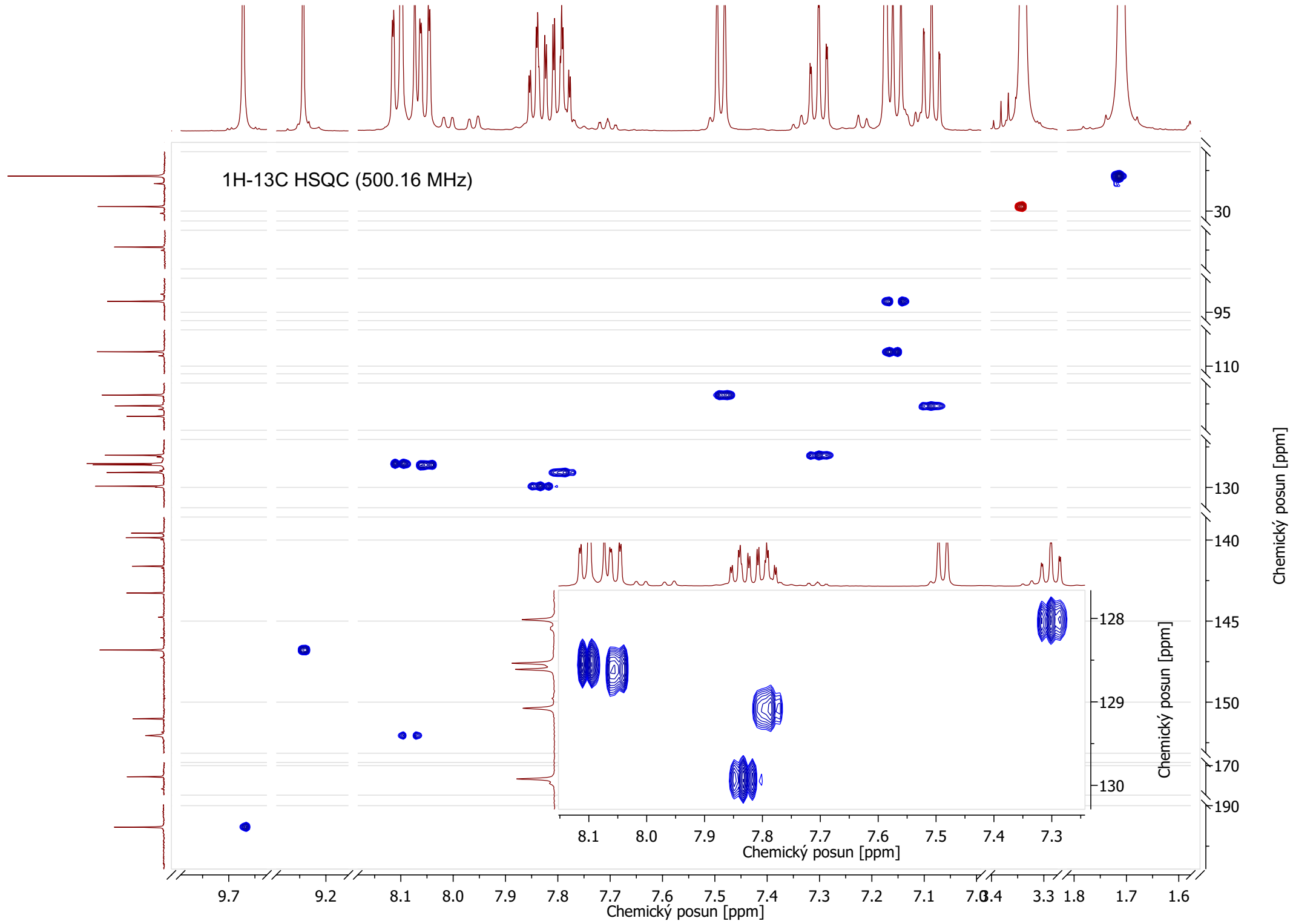


1H-1H ROESY (500.16 MHz)

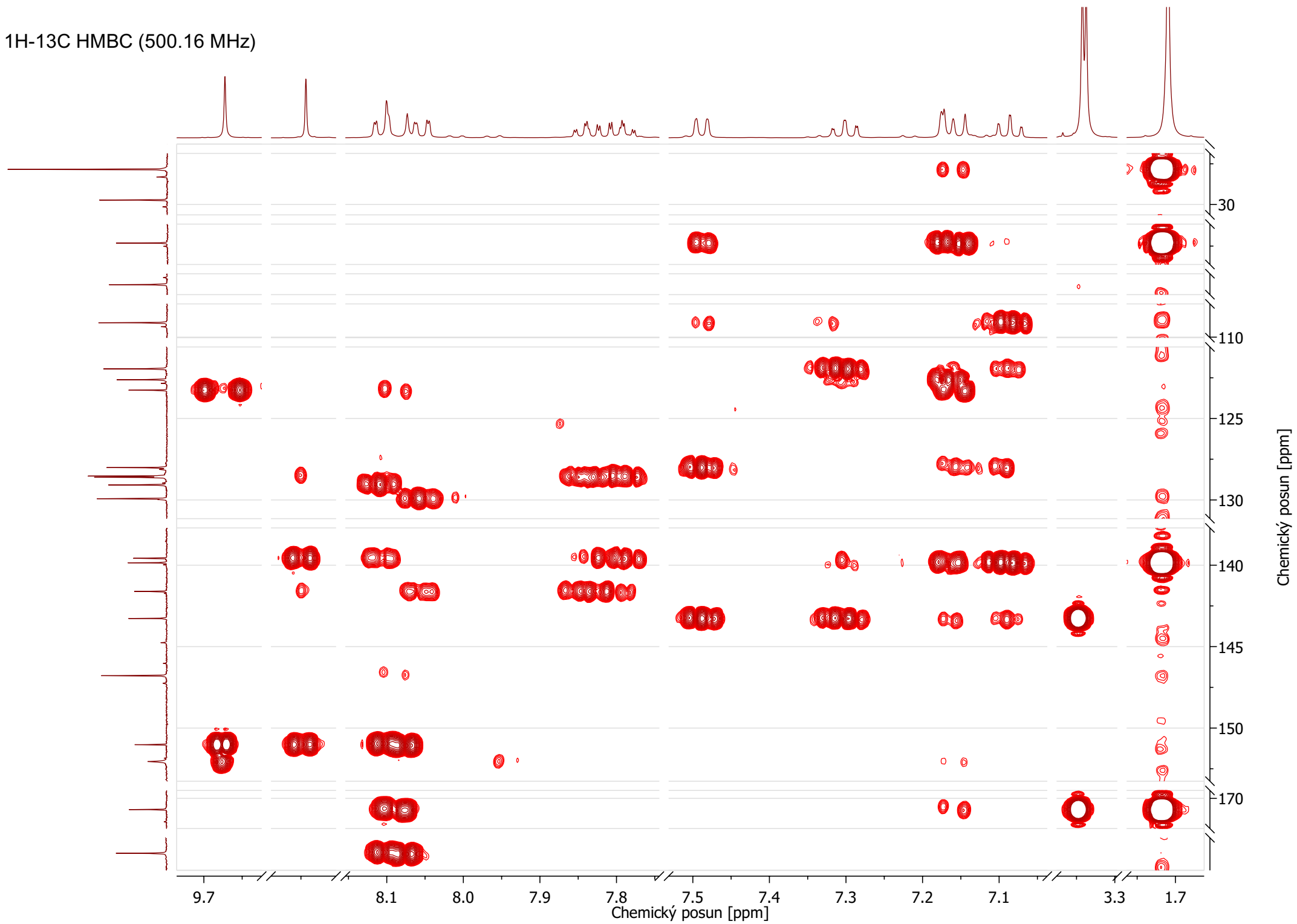


1H-1H COSY (500.16 MHz)





1H-13C HMBC (500.16 MHz)



1H-13C HMBC (500.16 MHz)

