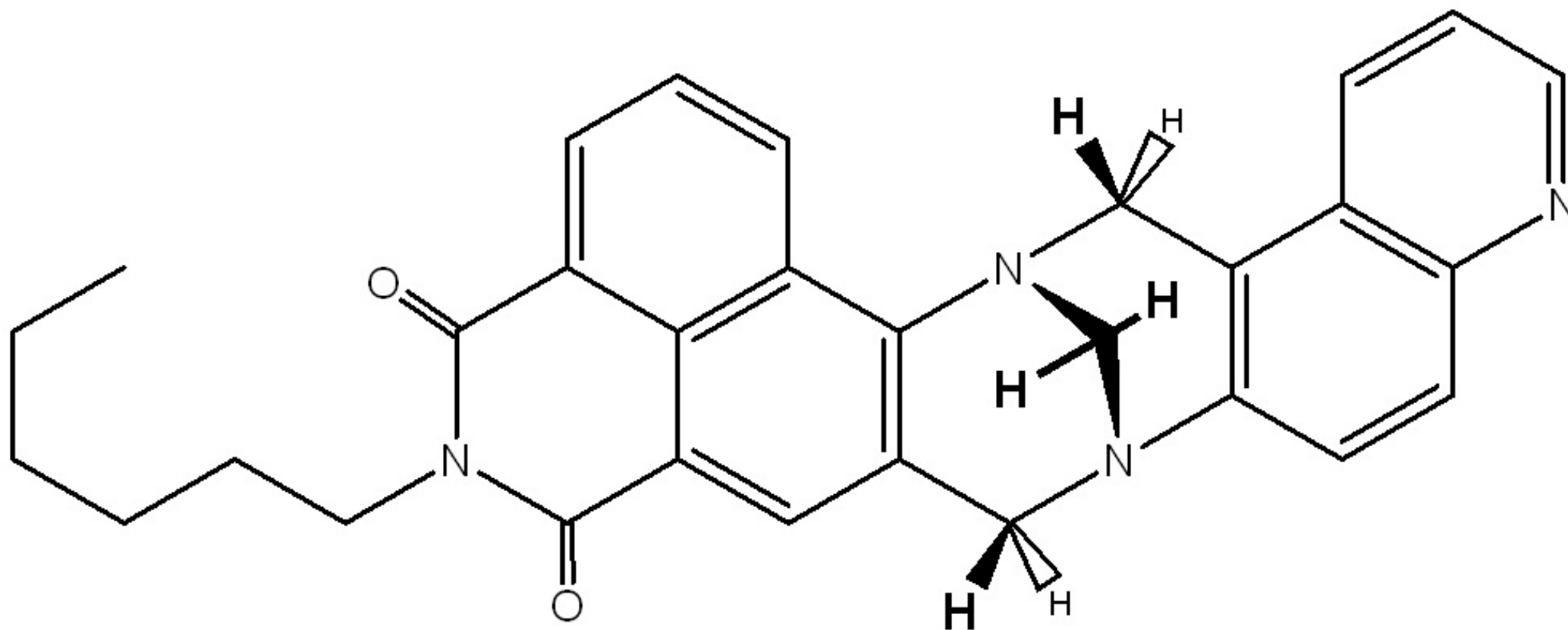


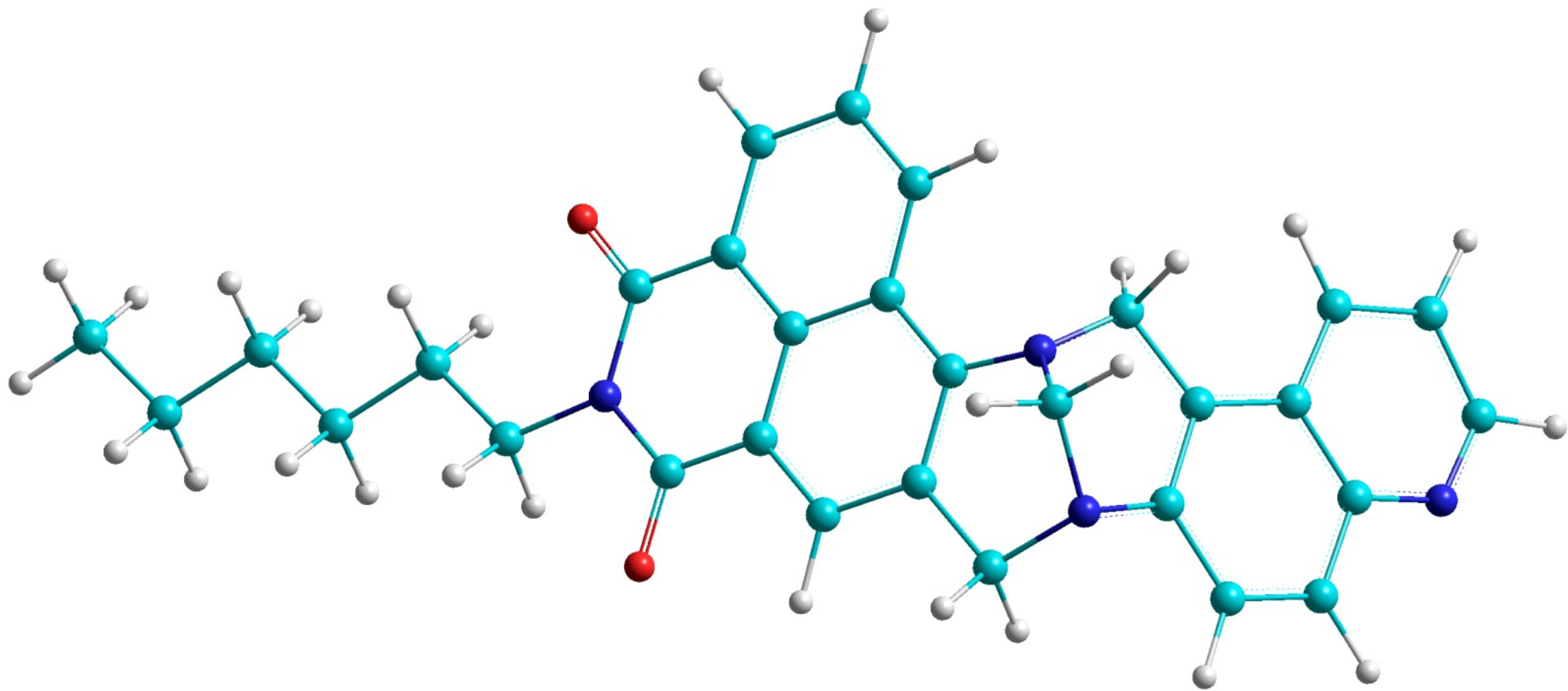
K jednotlivým atomům přiřaďte do vzorce molekuly chemické posuny ^1H , ^{13}C a ^{15}N .
Pokud lze, pak pro signály ^1H uveďte též multiplicitu a interakční konstanty.

Jméno: _____

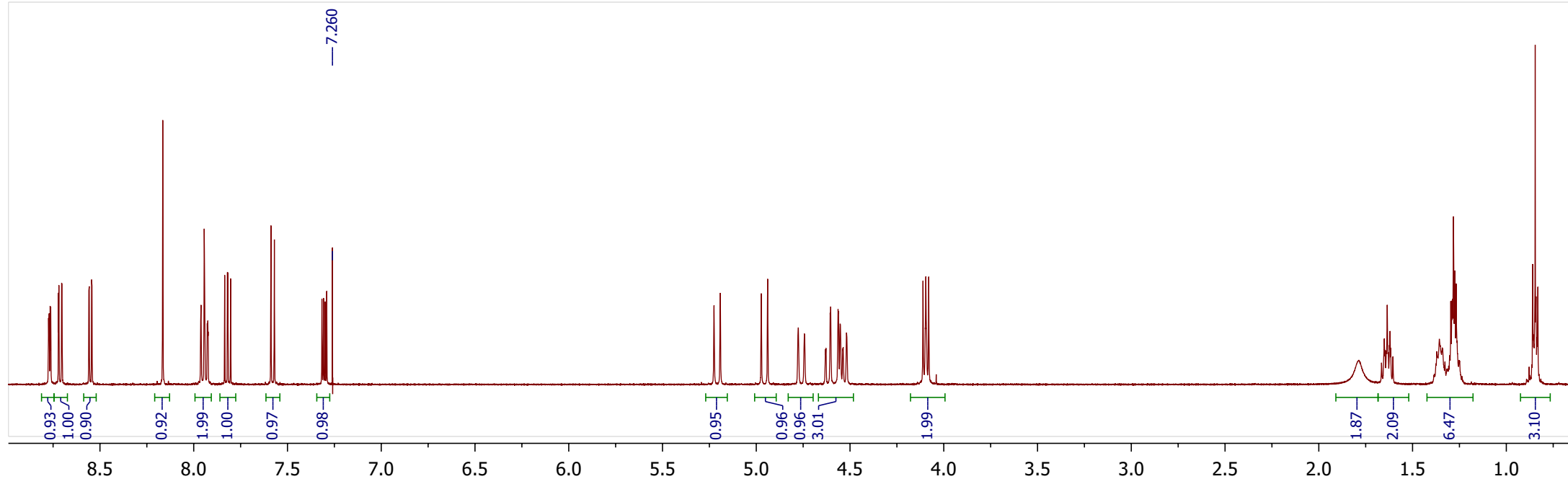
Datum: _____



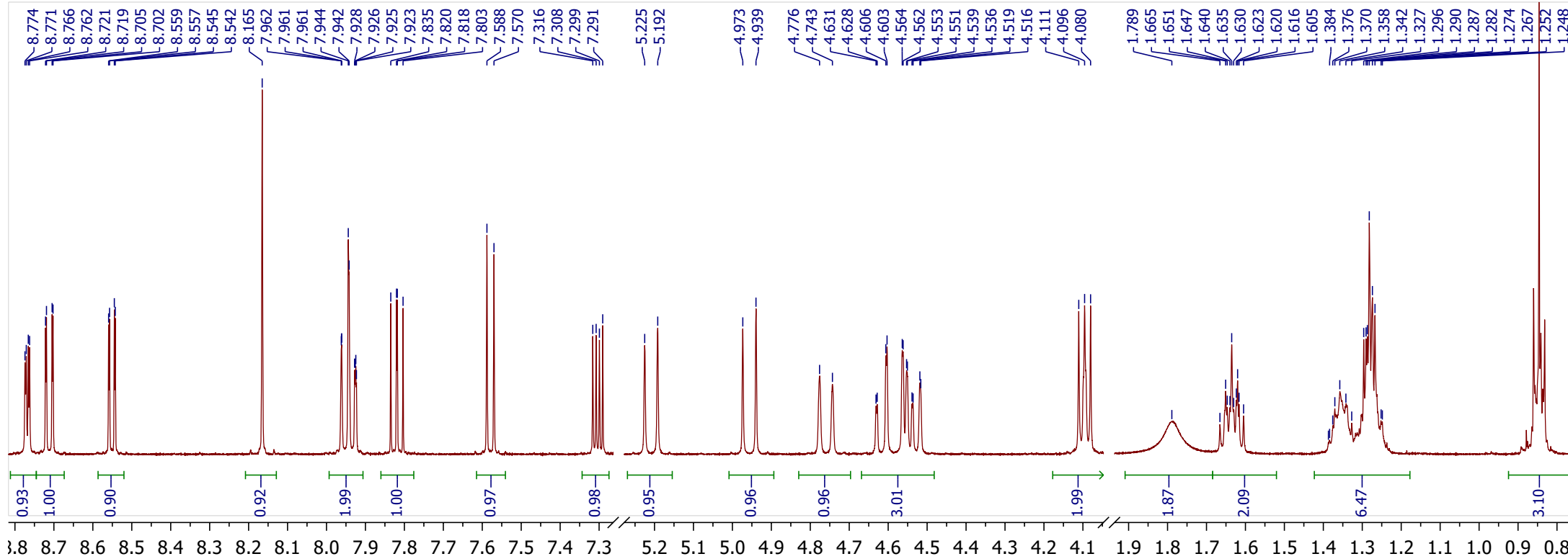
3D Model



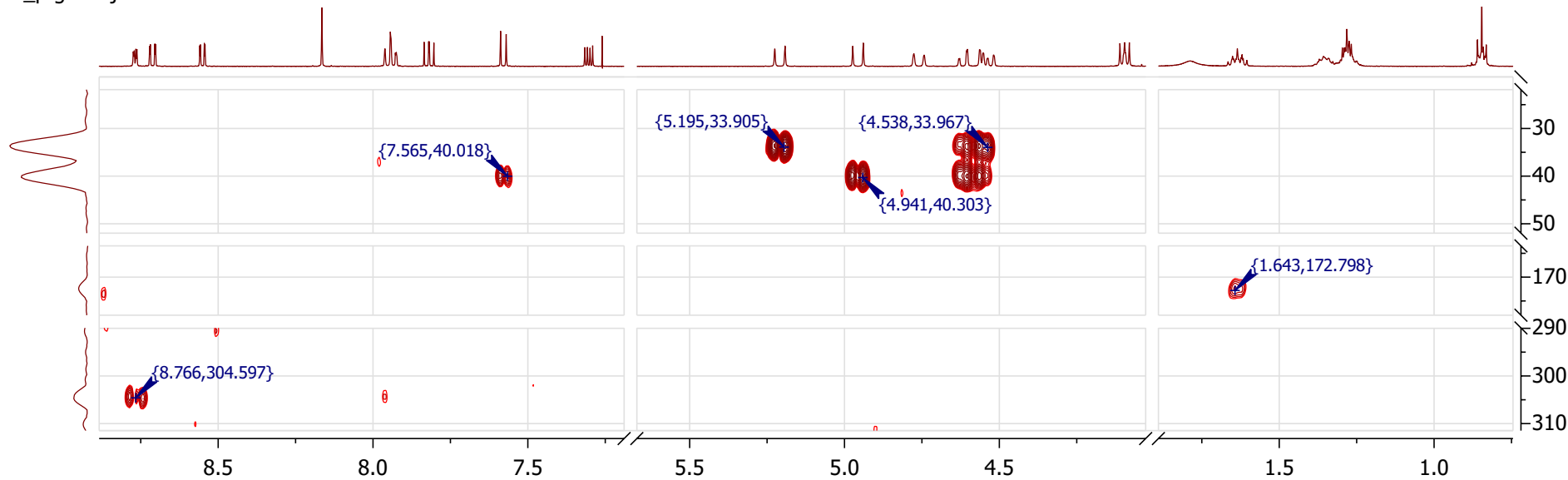
BD-MH-163-II_proton_64sc-1-1.jdf



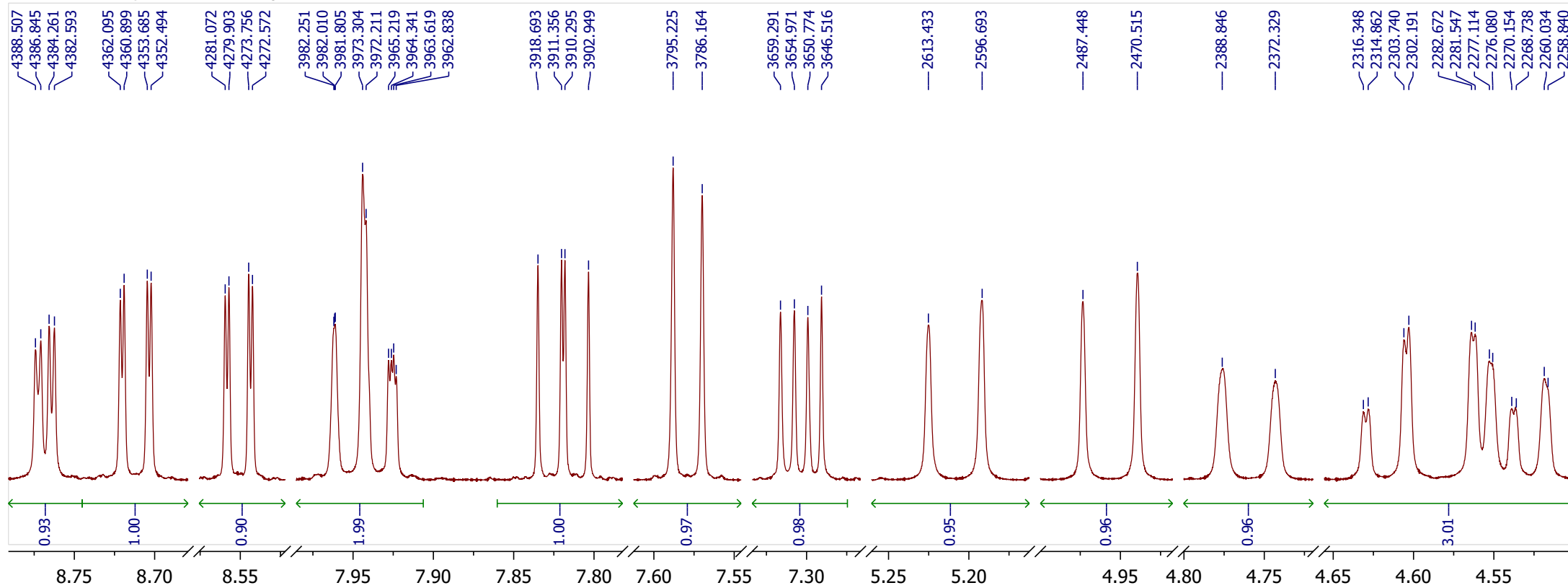
BD-MH-163-II_proton_64sc-1-1.jdf



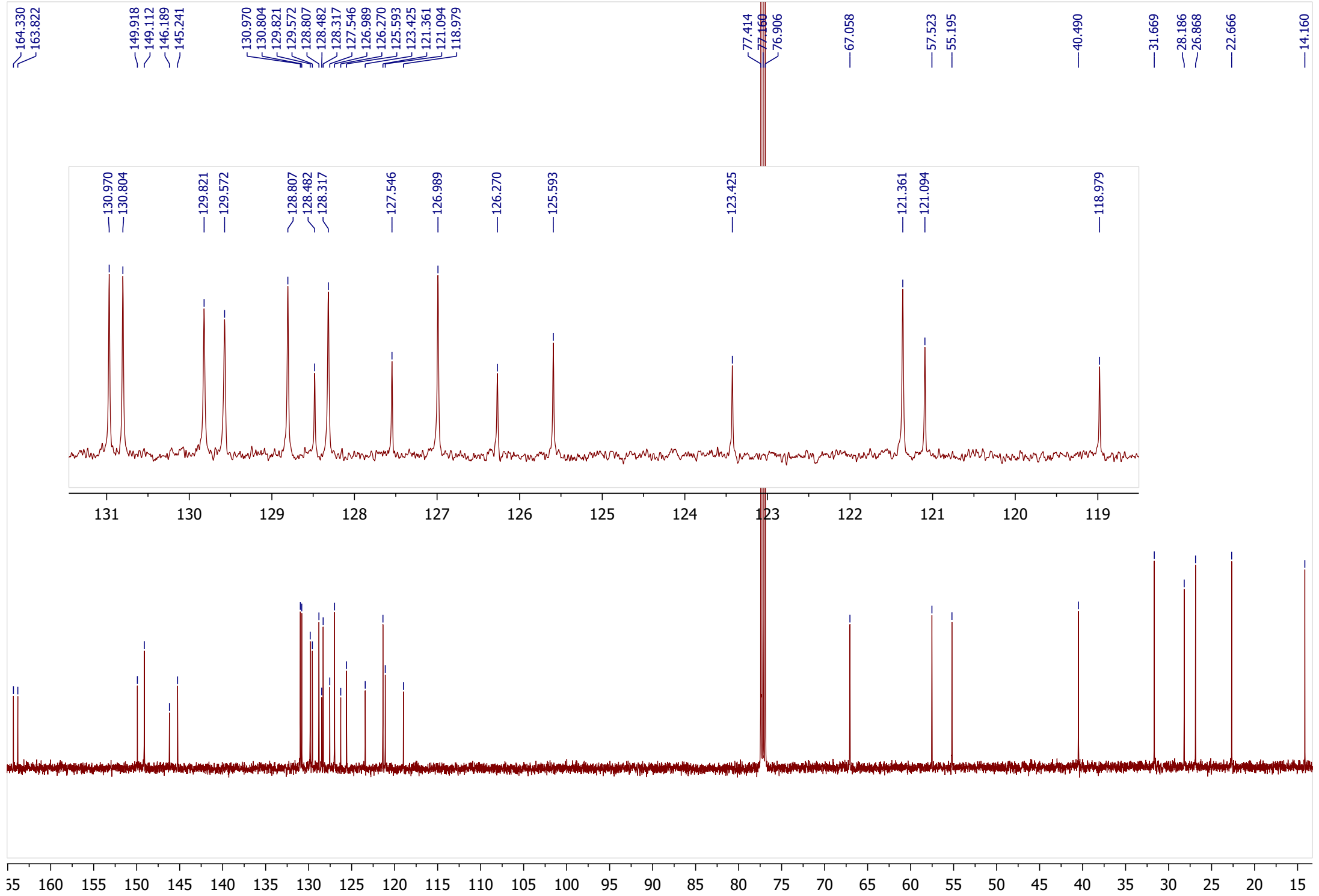
BD-MH-163-II_hmbc_pfg-2-1.jdf 1H-15N

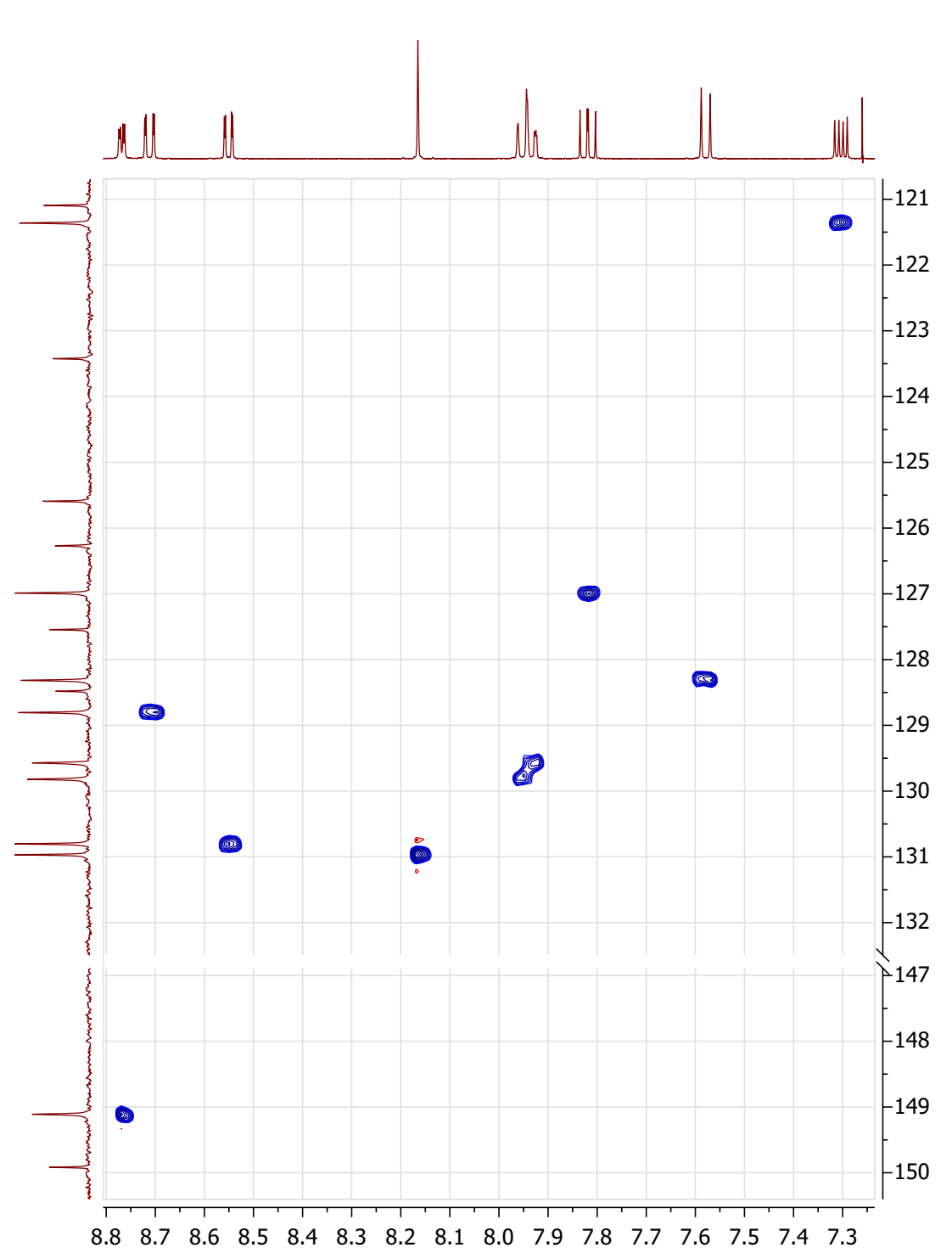
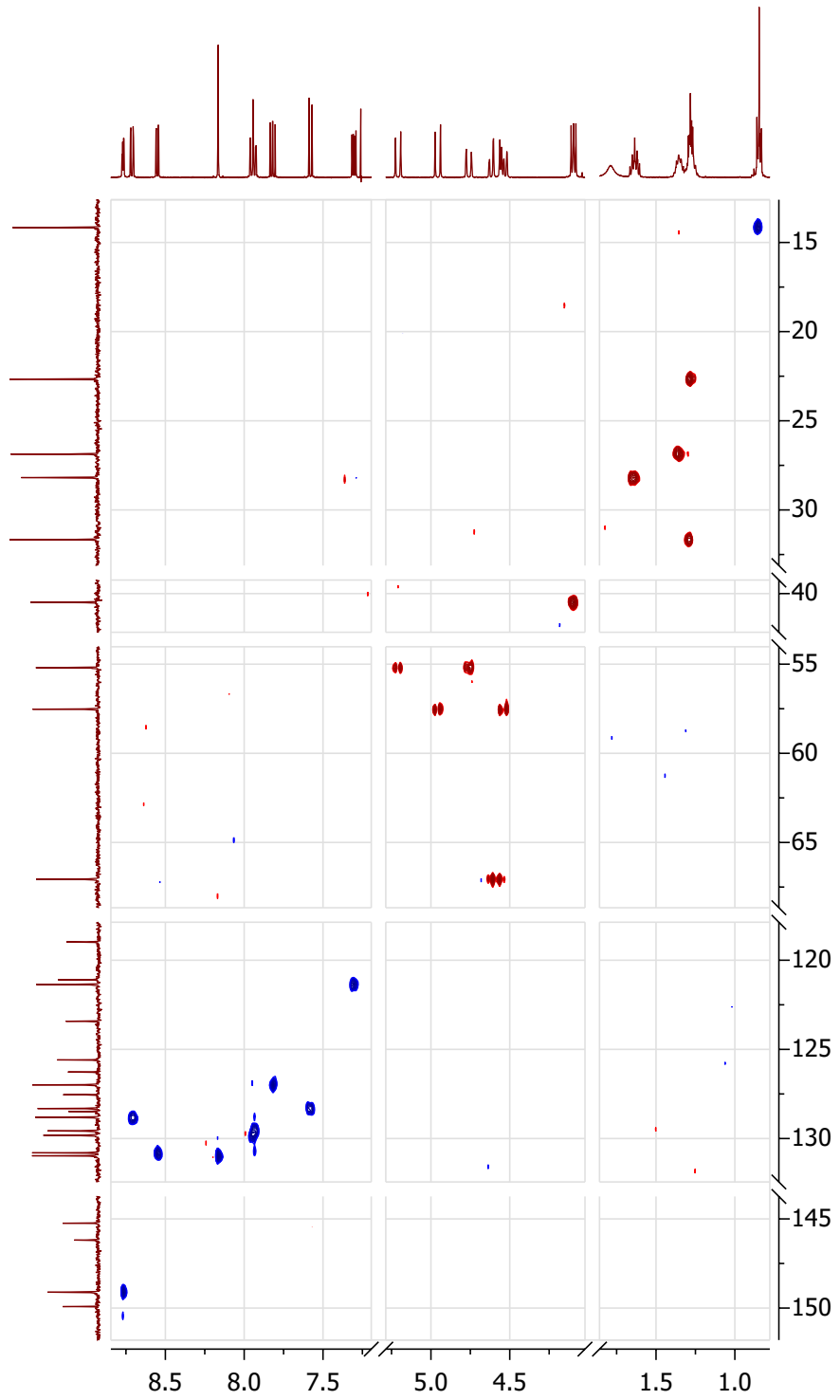


BD-MH-163-II_proton_64sc-1-1.jdf

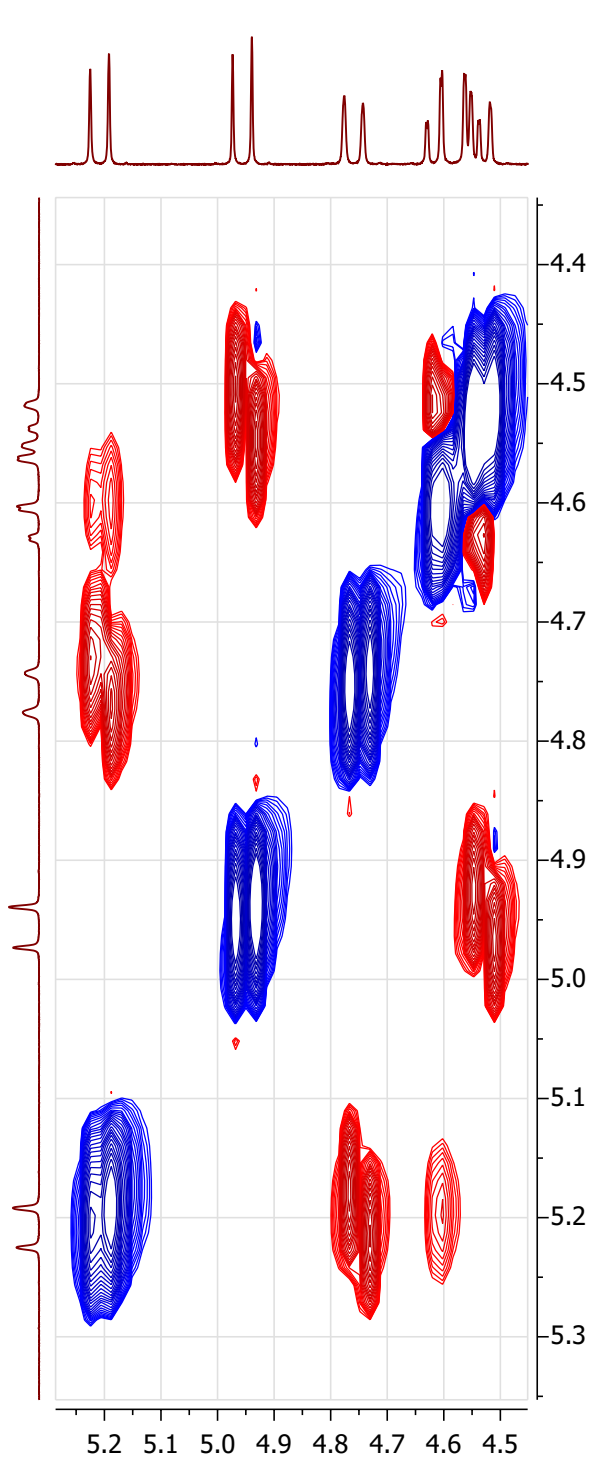


BD-MH-163-II_carbon_1000sc_test-1-1.jdf

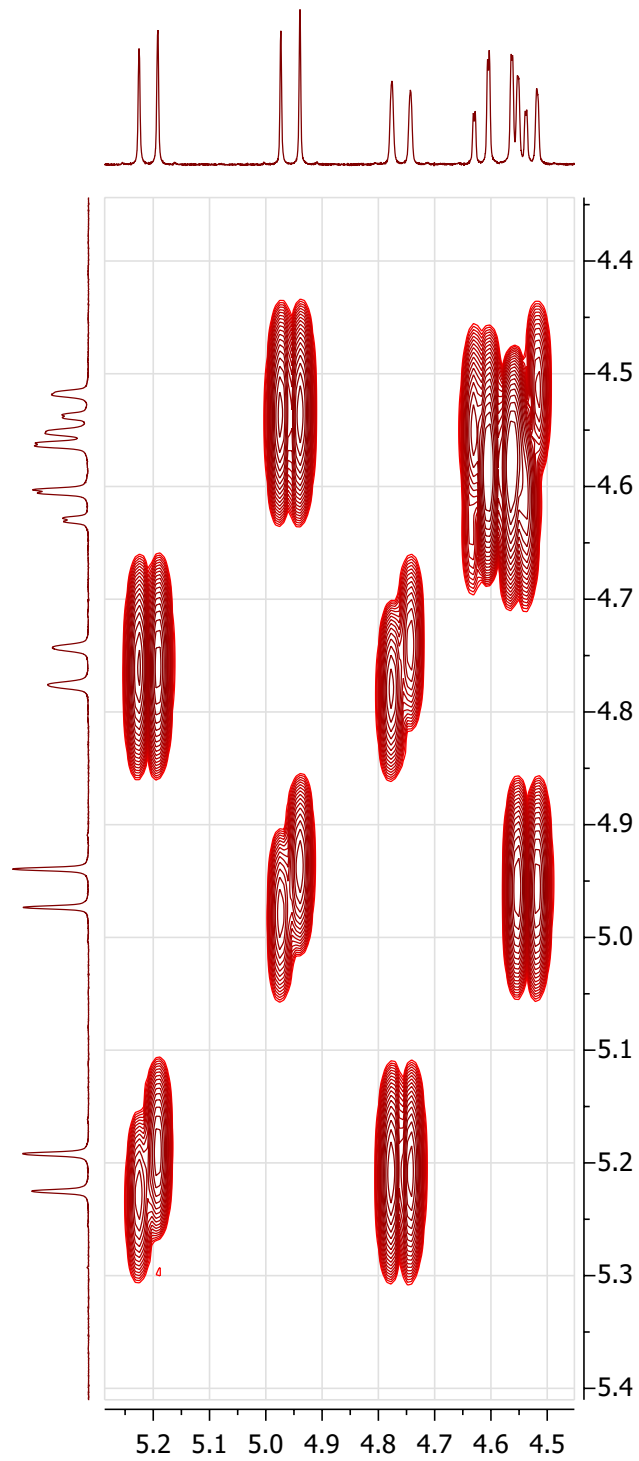




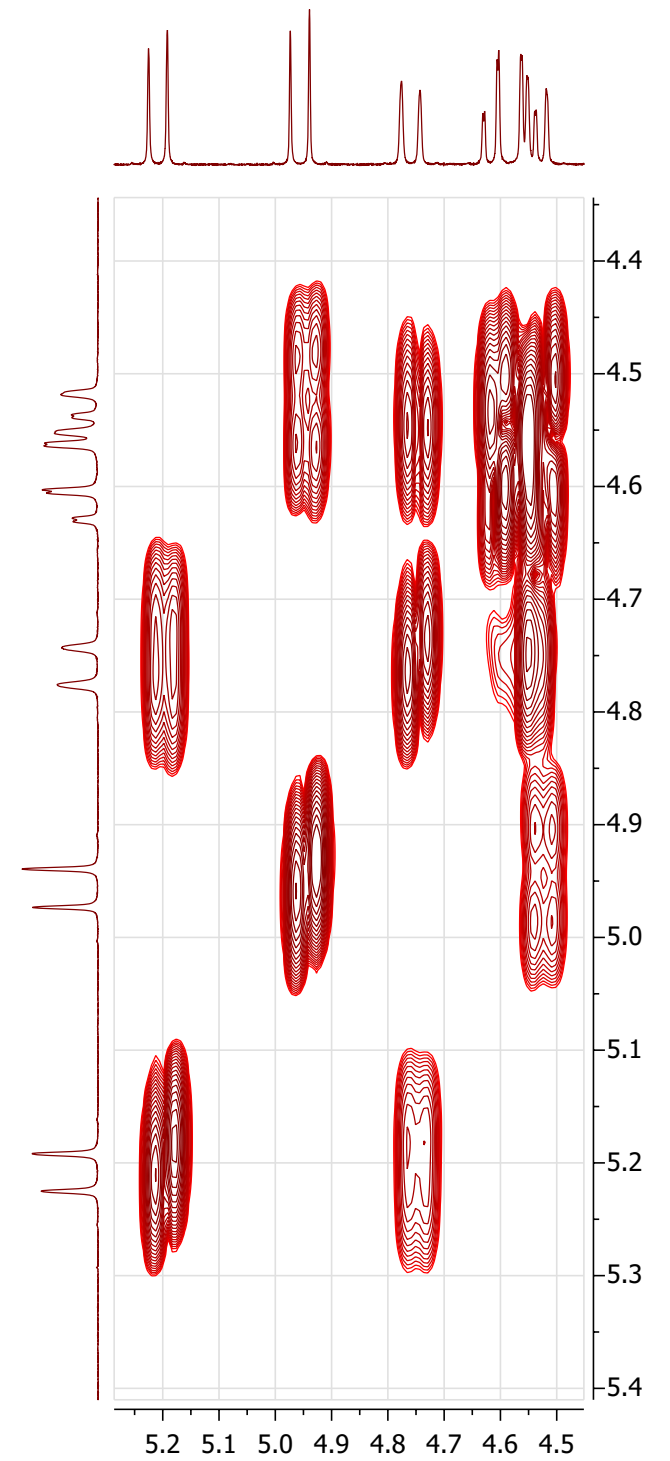
BD-MH-163-II_roesyad-1-1 (2).jdf

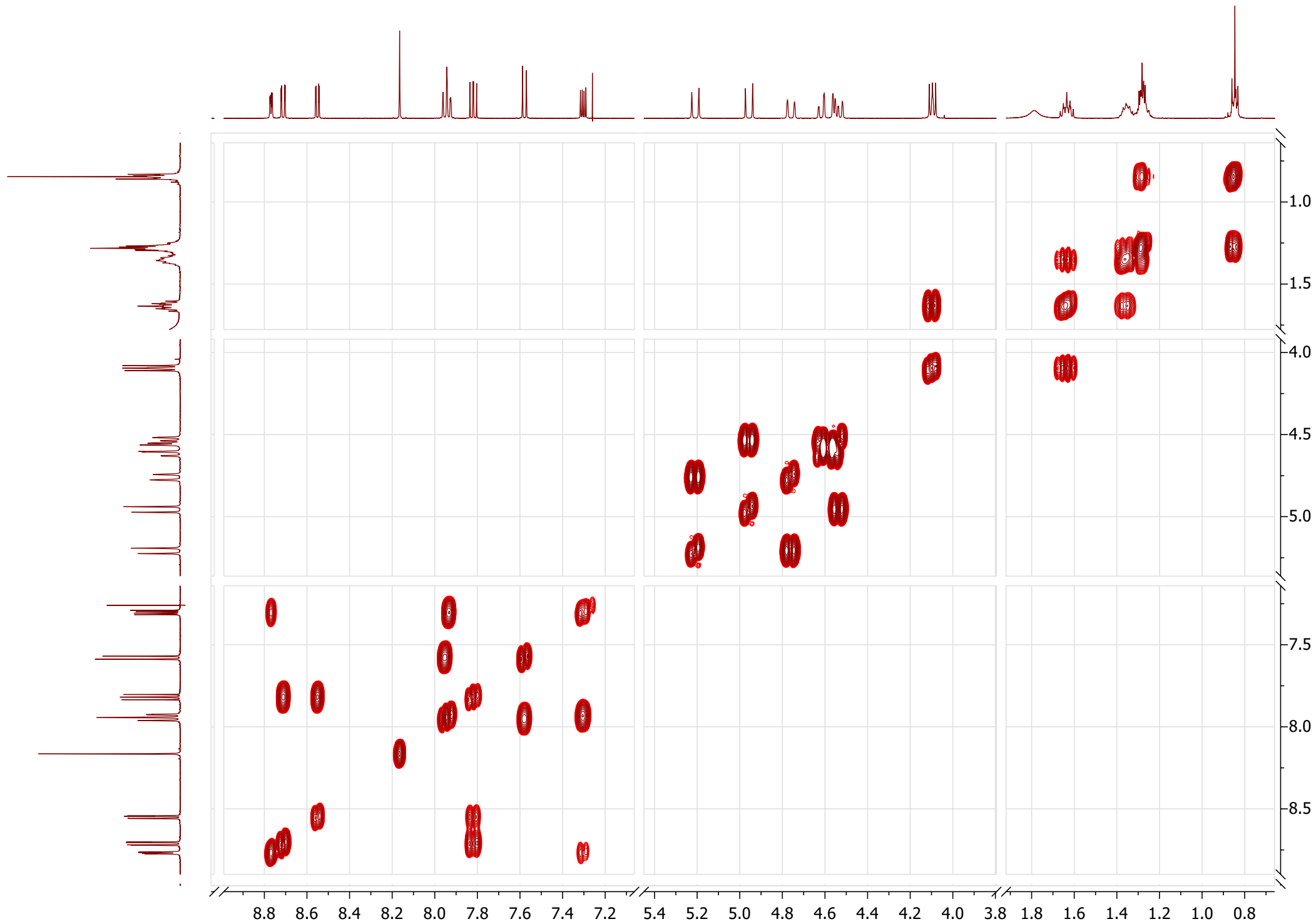


BD-MH-163-II_cosy45-1-1.jdf

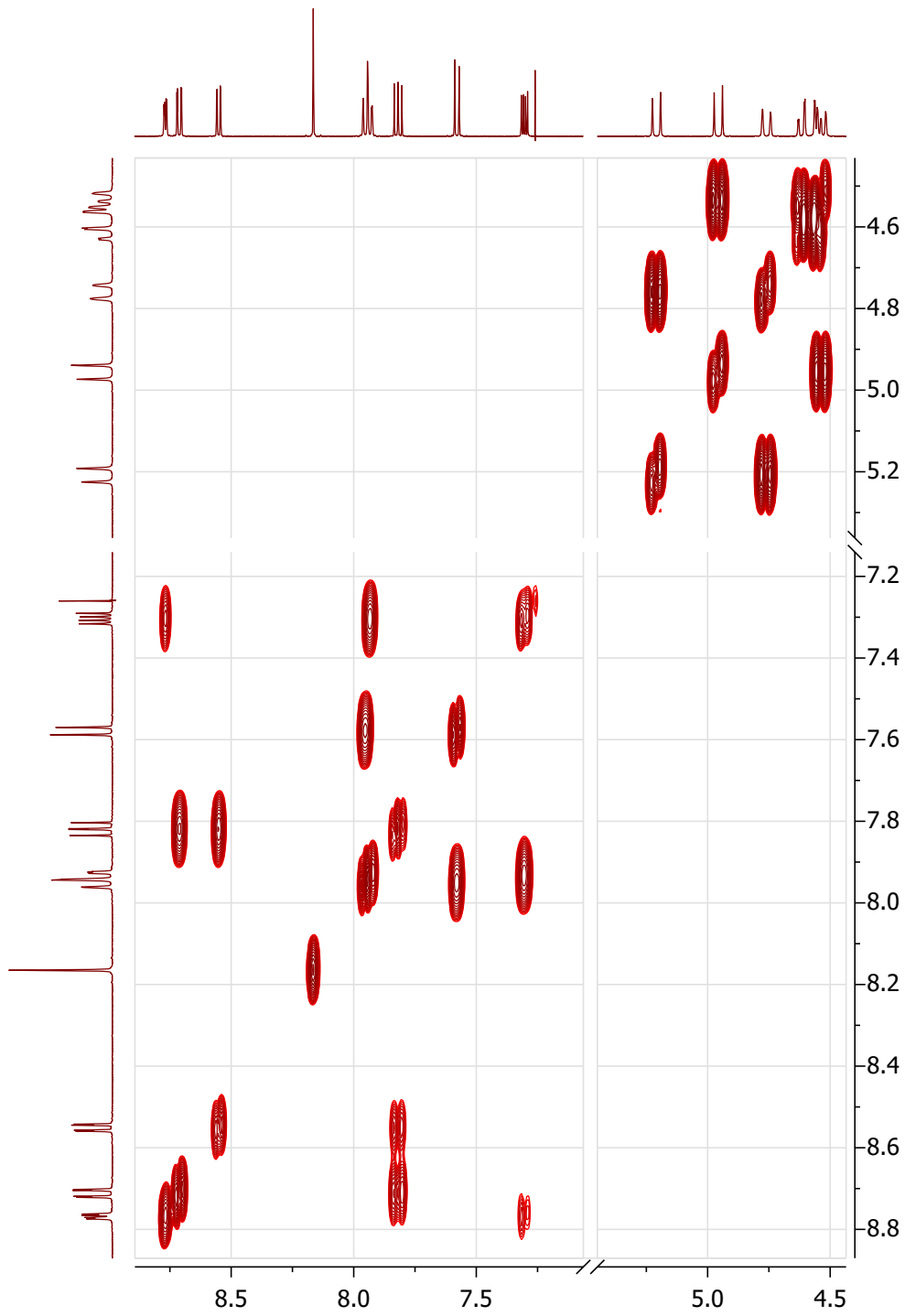


BD-MH-163-II_LR-COSY45_150ms-1-1.jdf

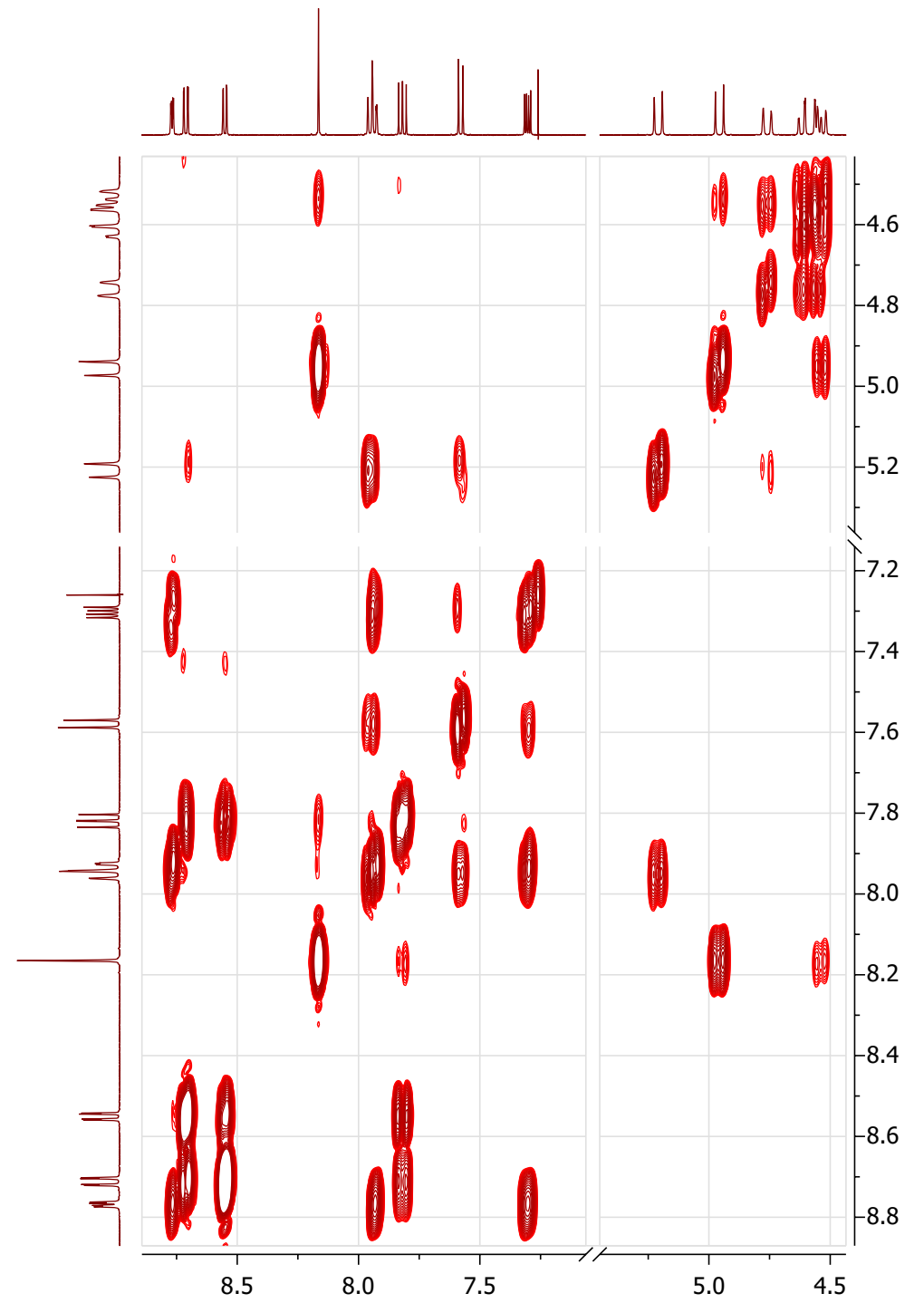




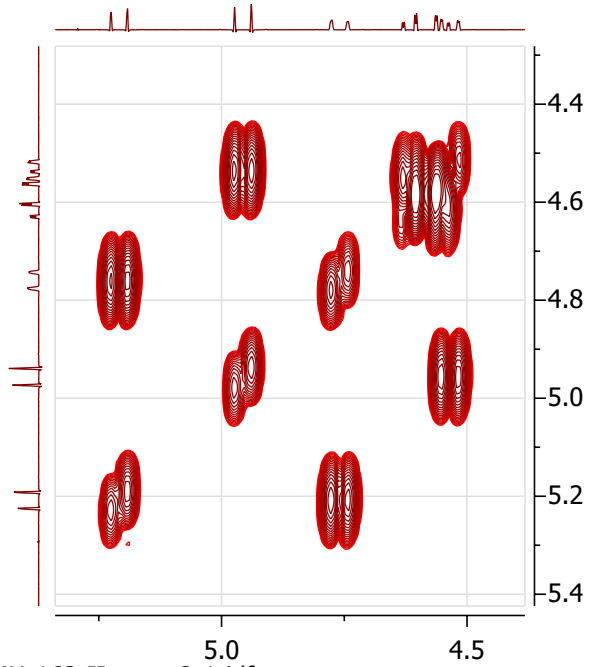
BD-MH-163-II_cosy45-1-1.jdf



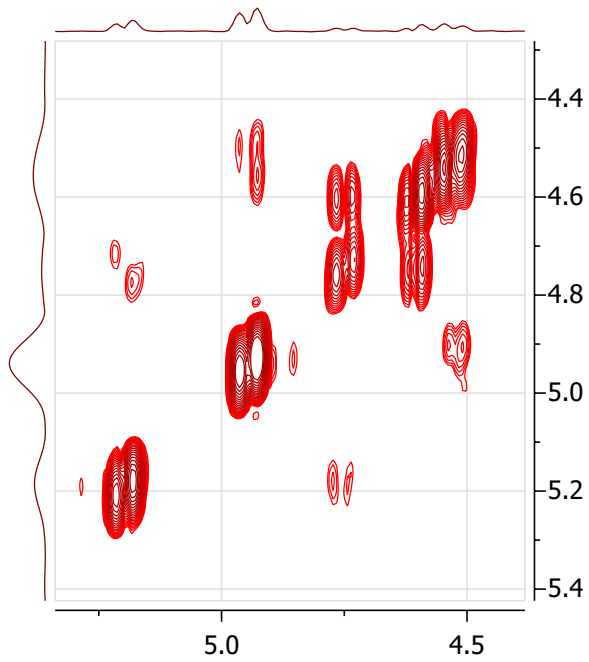
BD-MH-163-II_LR-COSY45_350ms-1-1.jdf



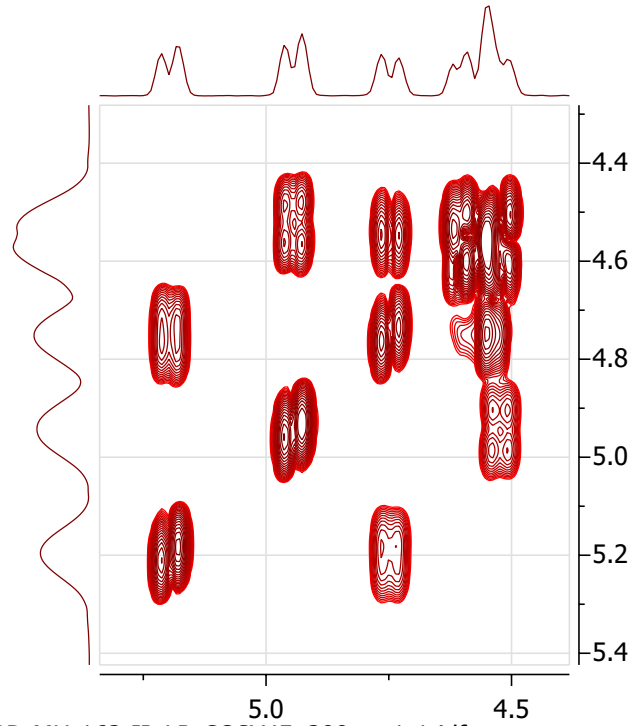
BD-MH-163-II_cosy45-1-1.jdf



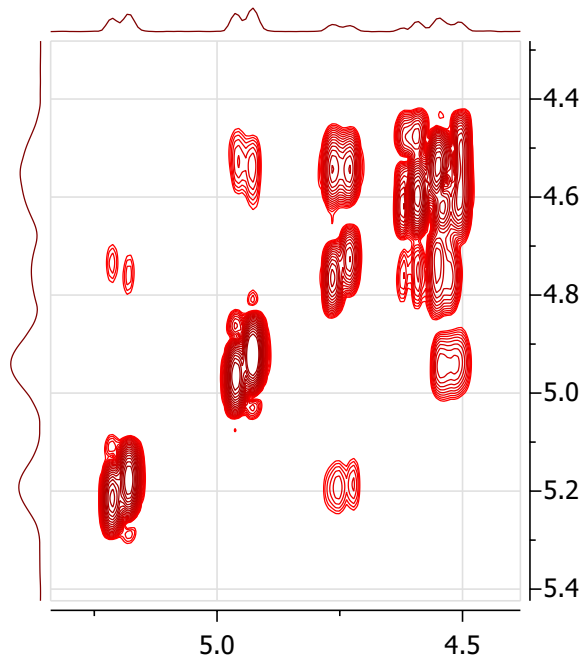
BD-MH-163-II_cosy-2-1.jdf



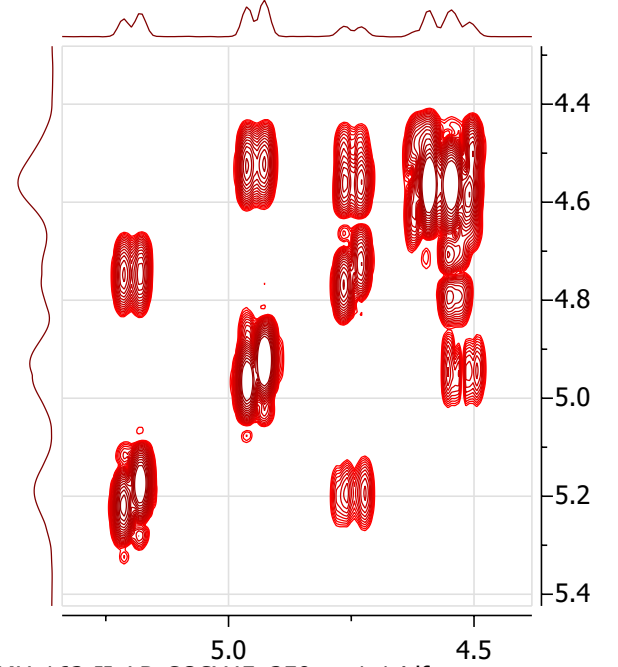
BD-MH-163-II_LR-COSY45_150ms-1-1.jdf



BD-MH-163-II_LR-COSY45_300ms-1-1.jdf



BD-MH-163-II_cosy-1-1.jdf



BD-MH-163-II_LR-COSY45_350ms-1-1.jdf

