

Úvod do strukturní analýzy farmaceutických látek

Garant předmětu: doc. Ing. Bohumil Dolenský, Ph.D.

Vyučující: prof. RNDr. Pavel Matějka, Ph.D., A136, linka 3687, matejkap@vscht.cz

doc. Ing. Bohumil Dolenský, Ph.D., A28, linka 4110, dolenskb@vscht.cz

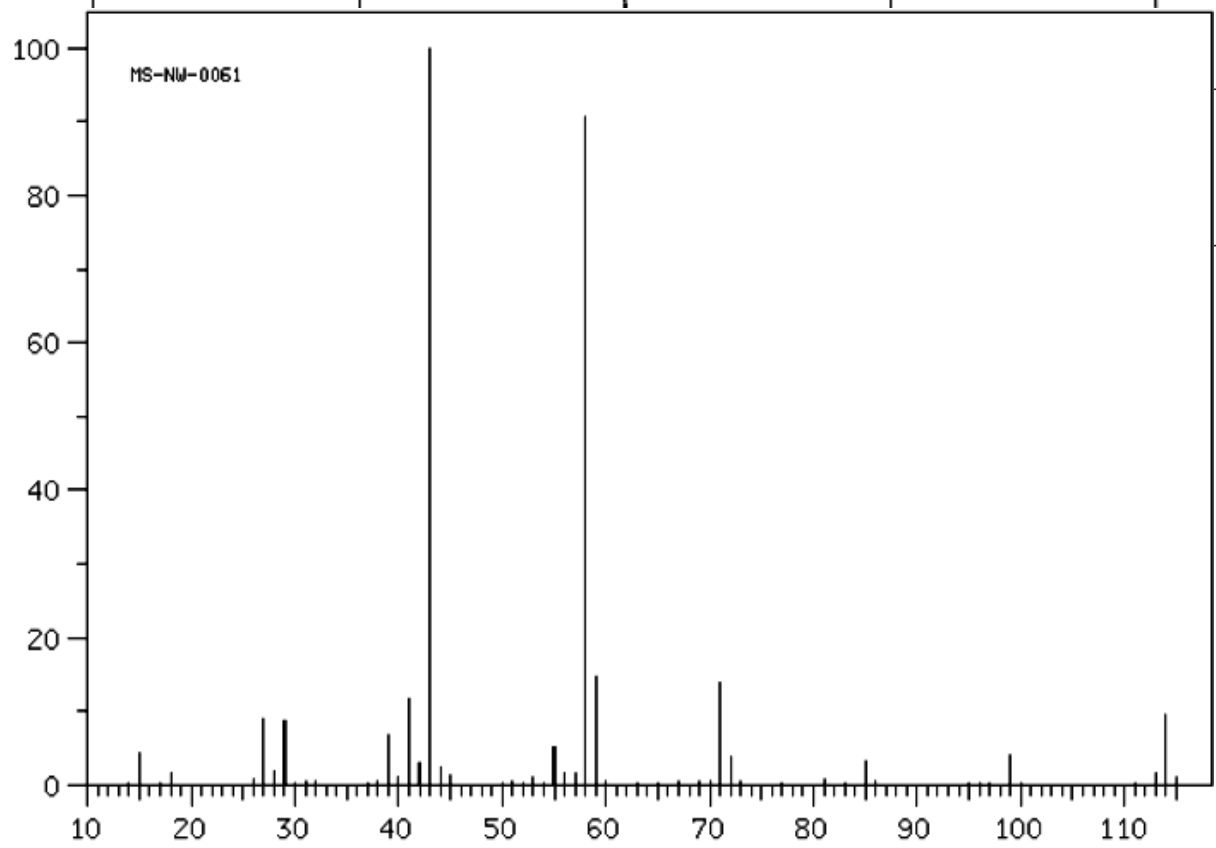
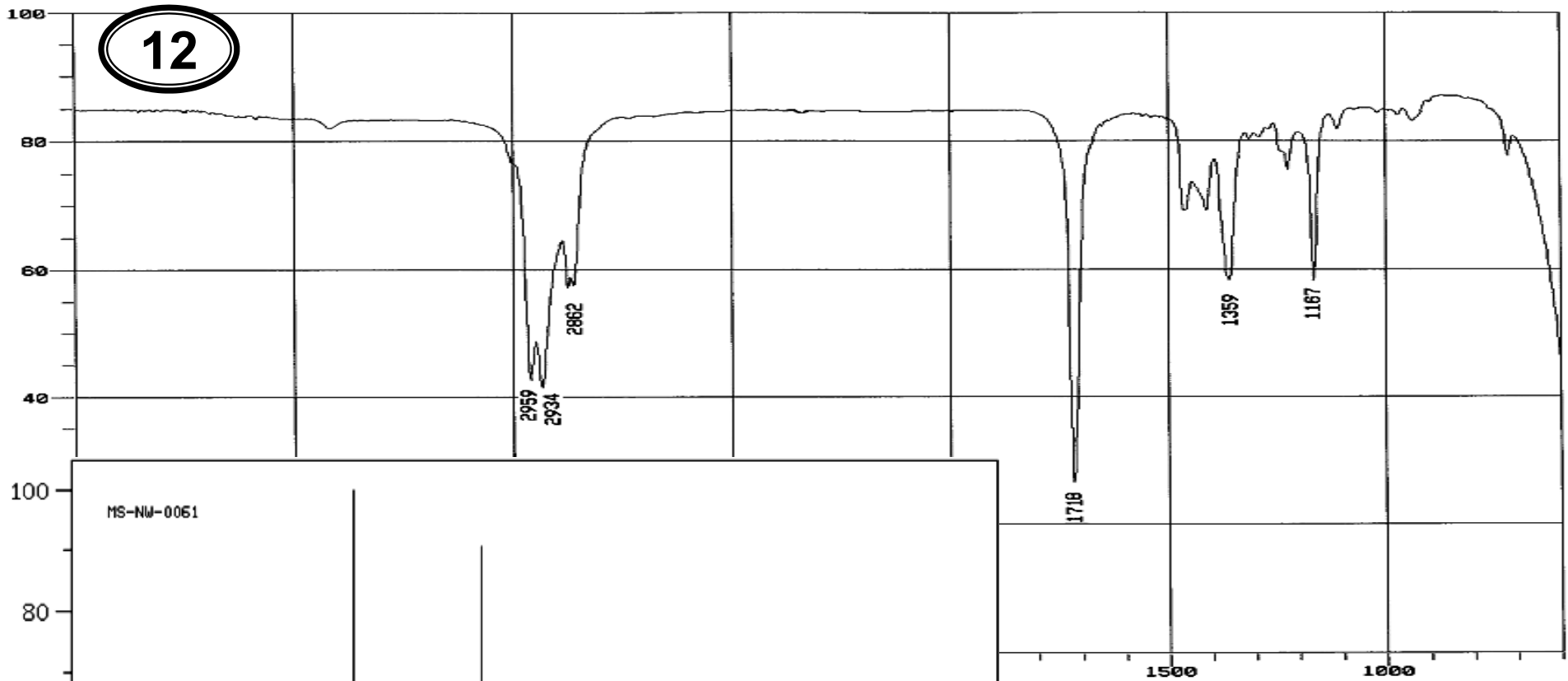
Komplexní příklady strukturní analýzy II.

*Příprava předmětu byla podpořena
projektem OPPA č. CZ.2.17/3.1.00/33253*

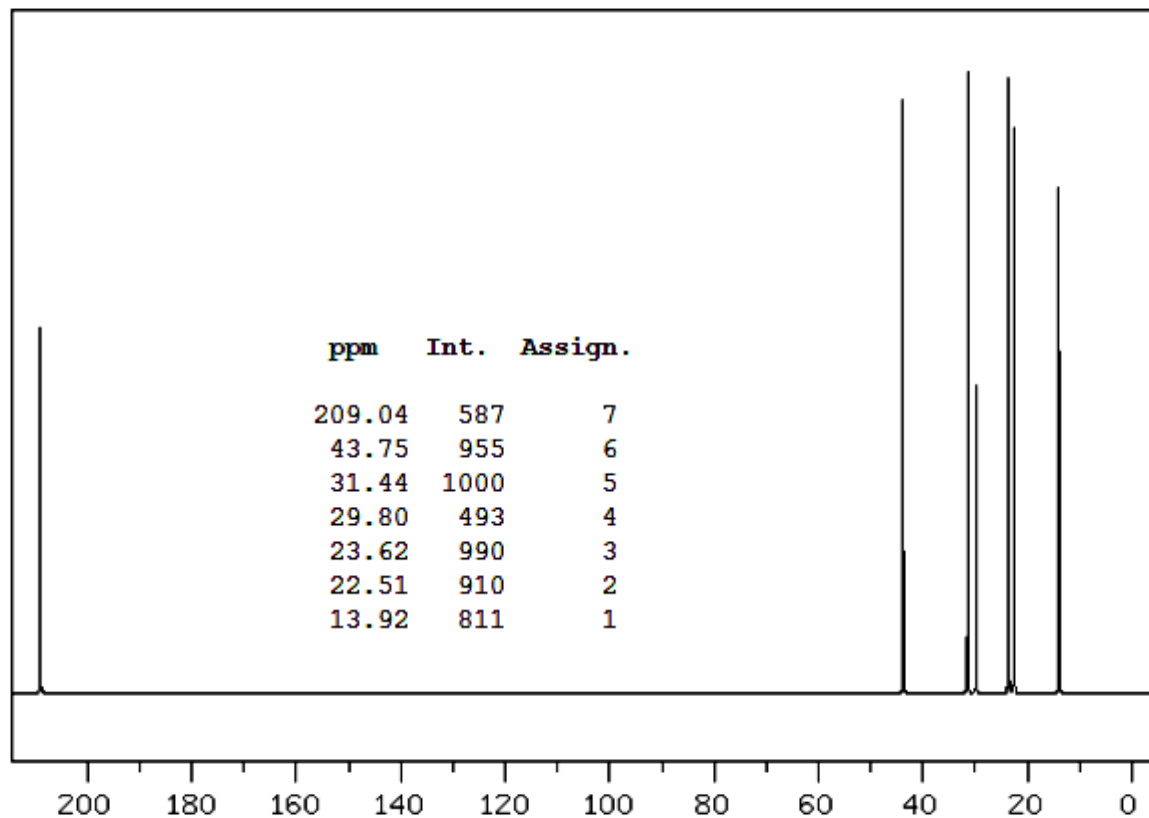
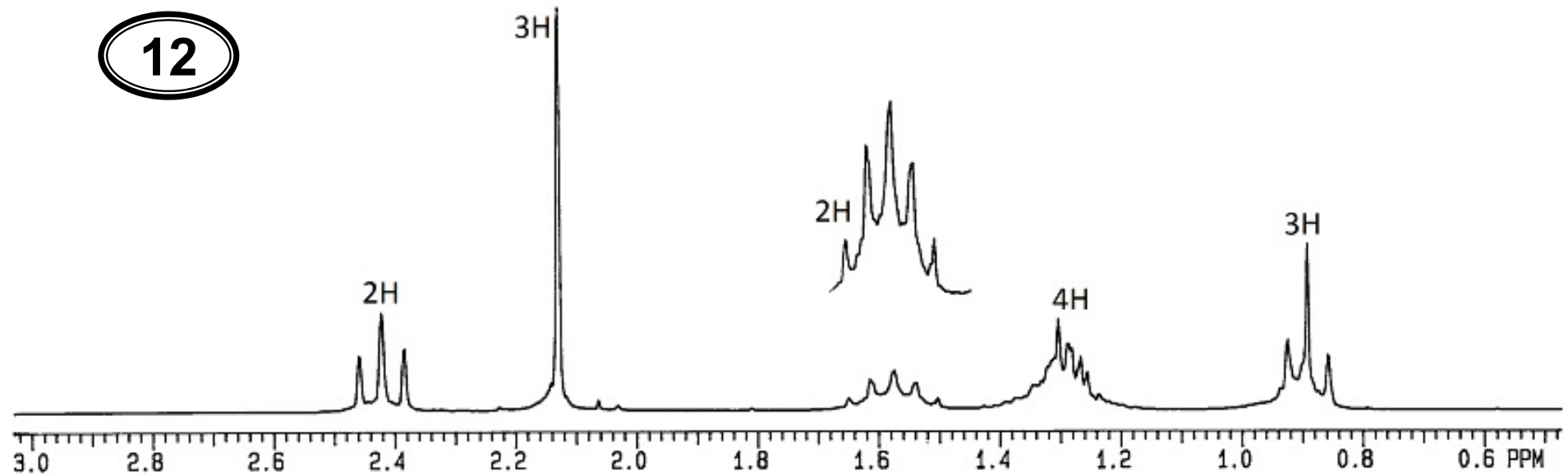


**Evropský sociální fond
Praha & EU: Investujeme do vaší budoucnosti**

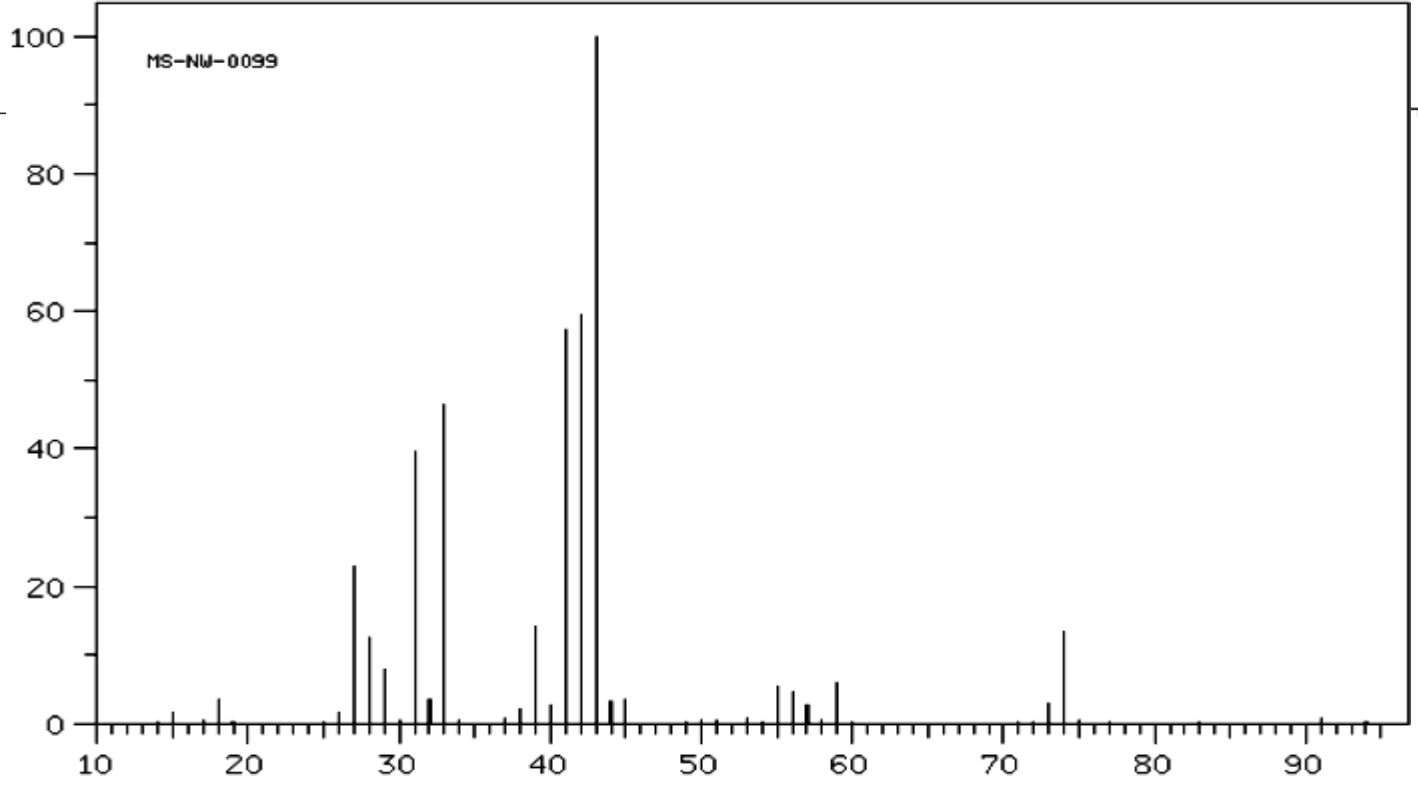
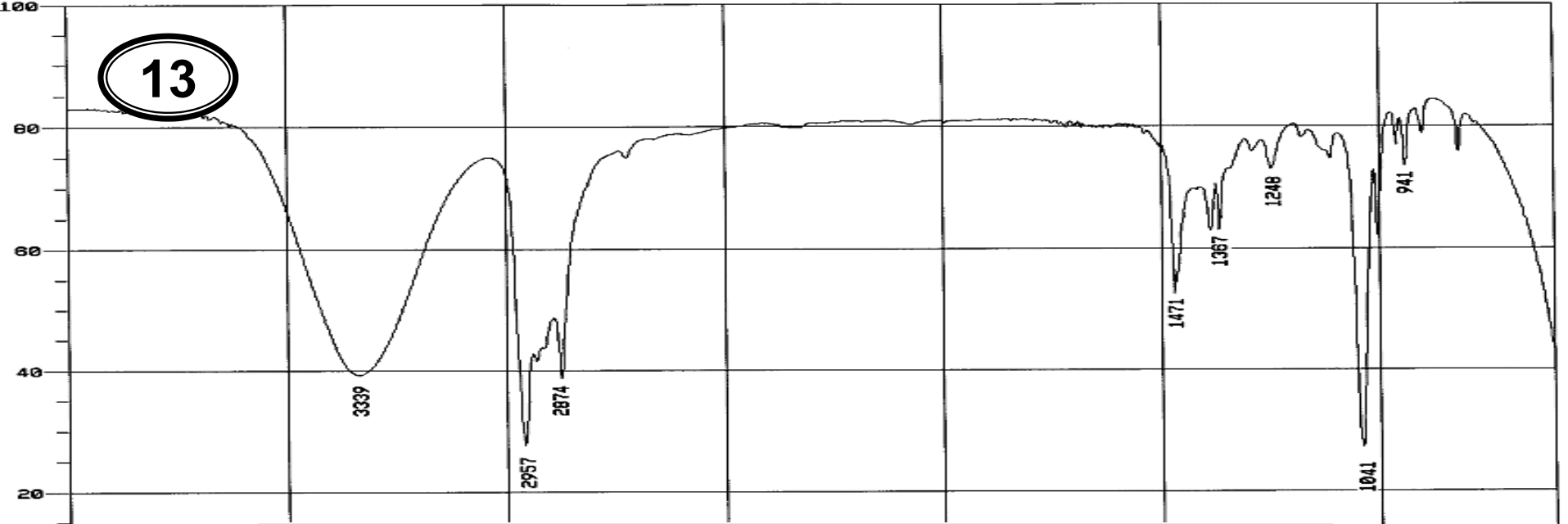
12



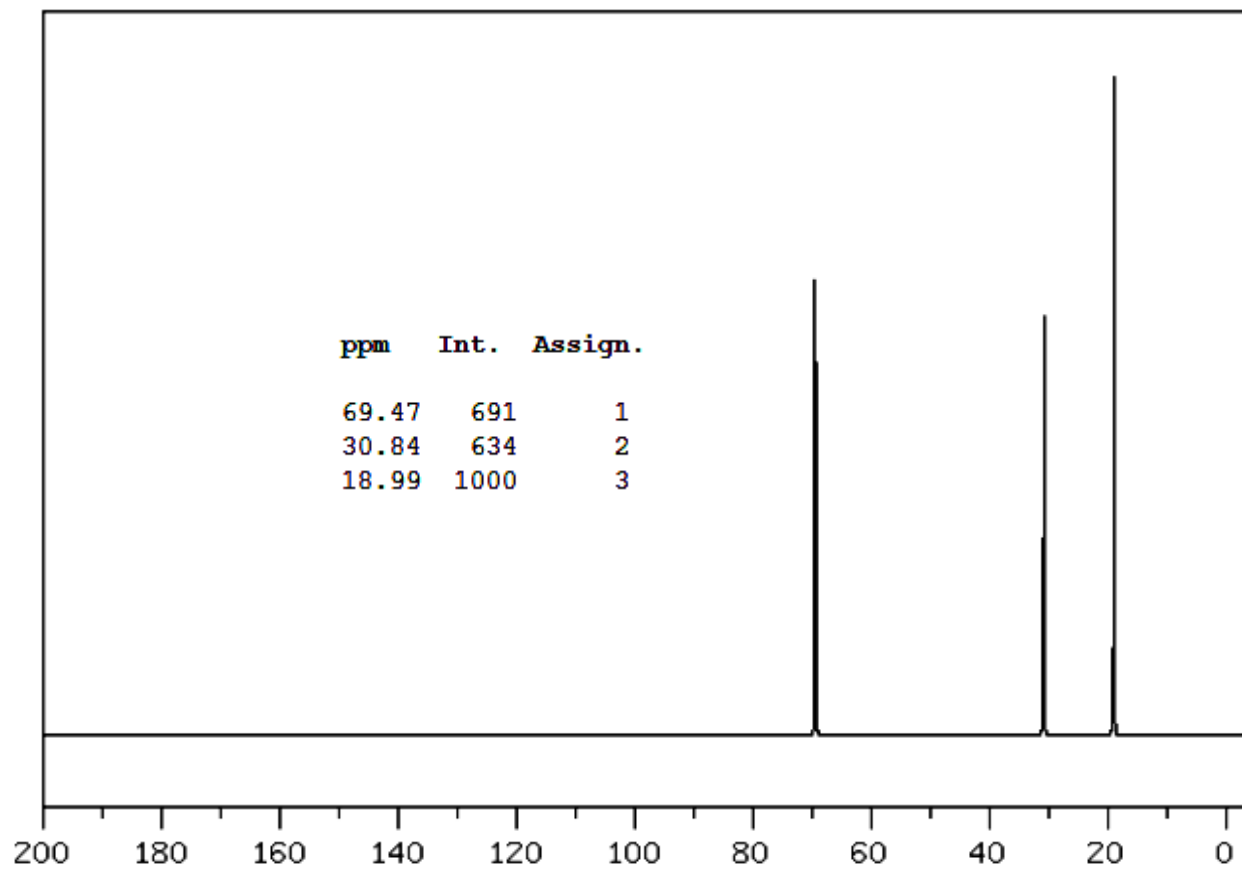
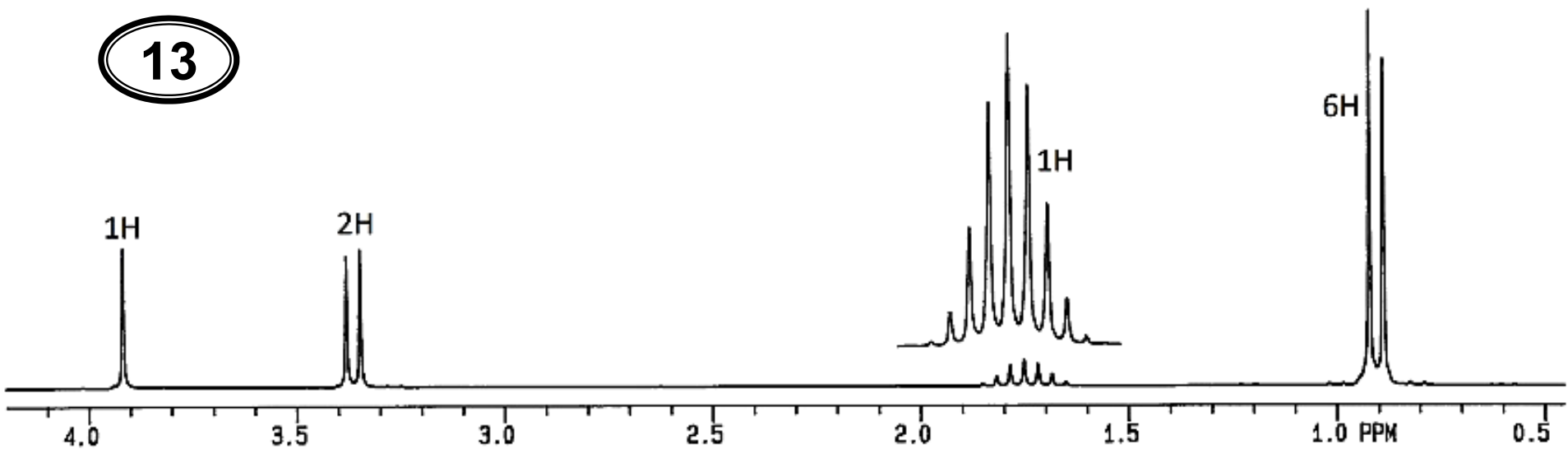
12



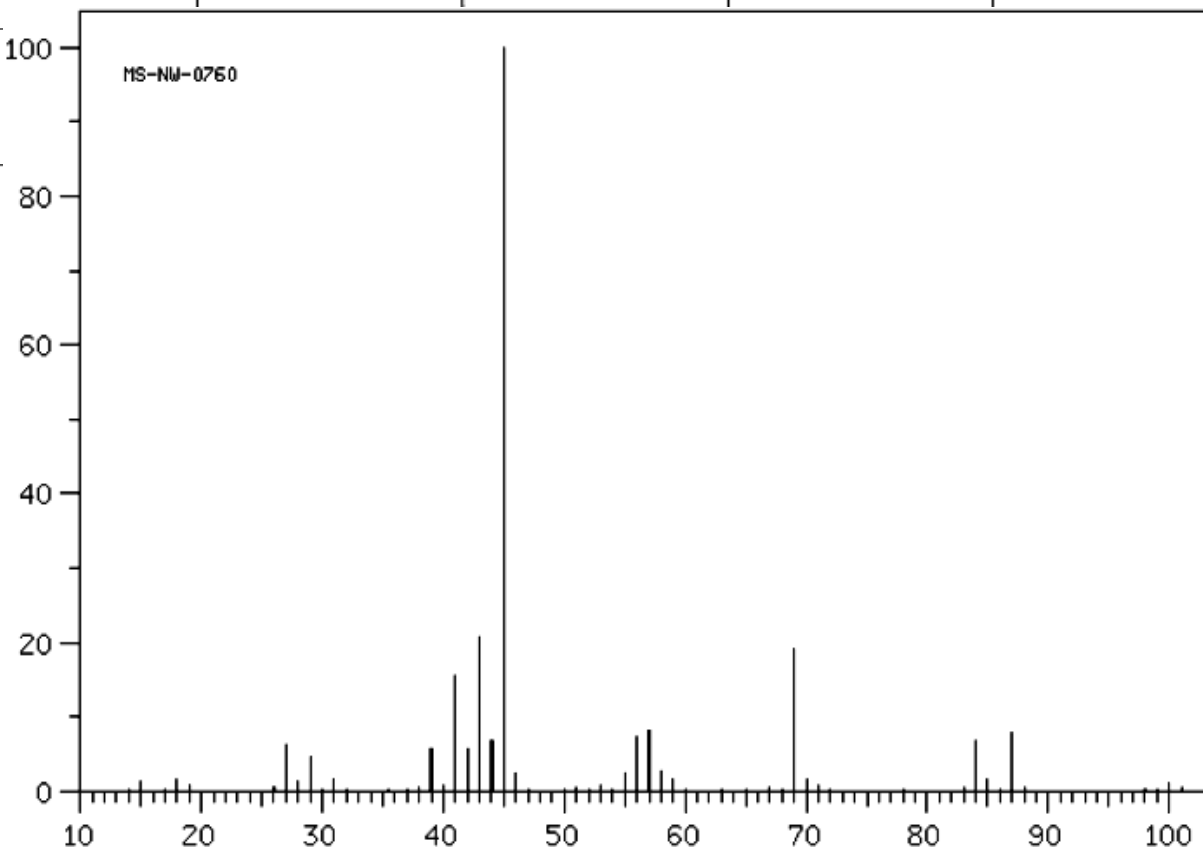
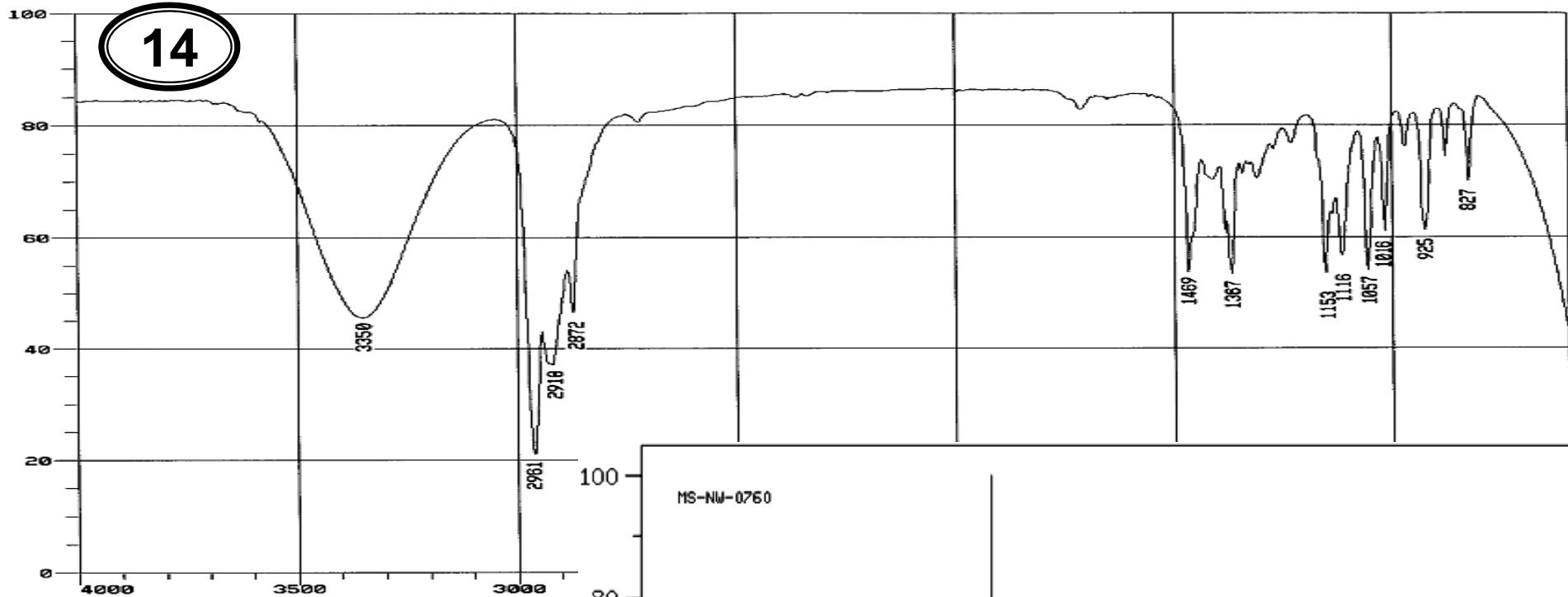
13



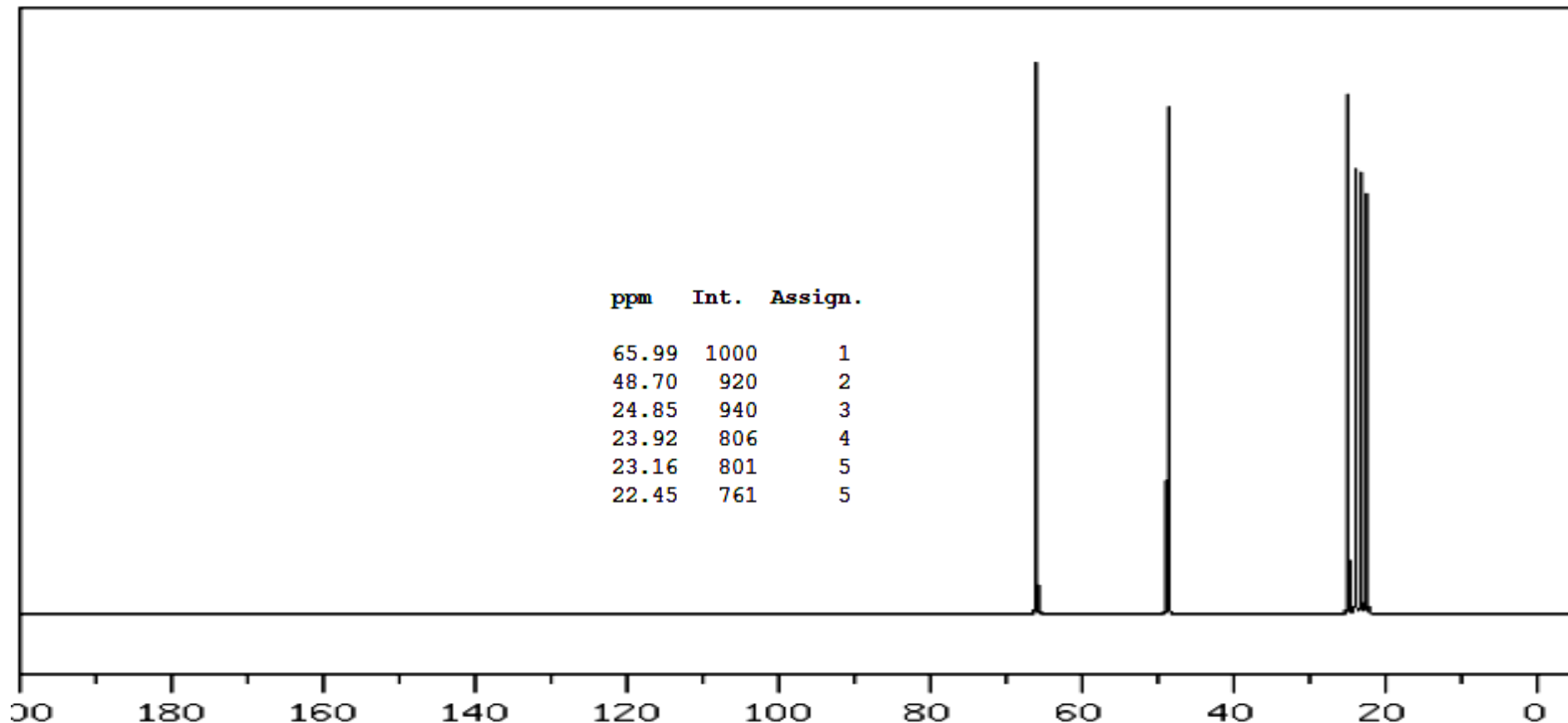
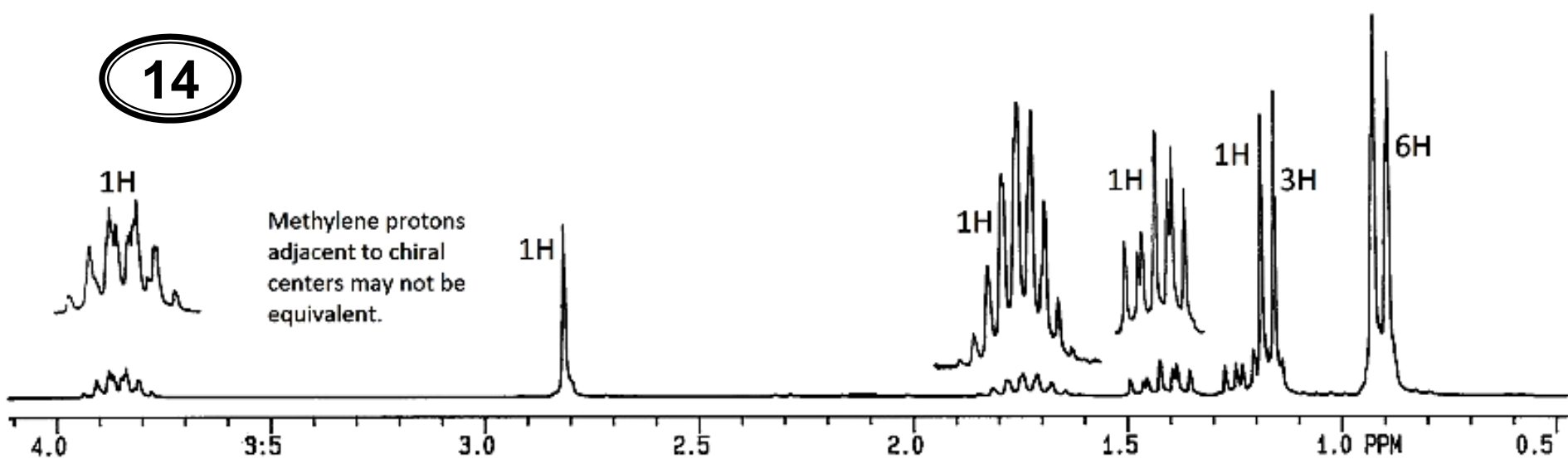
13



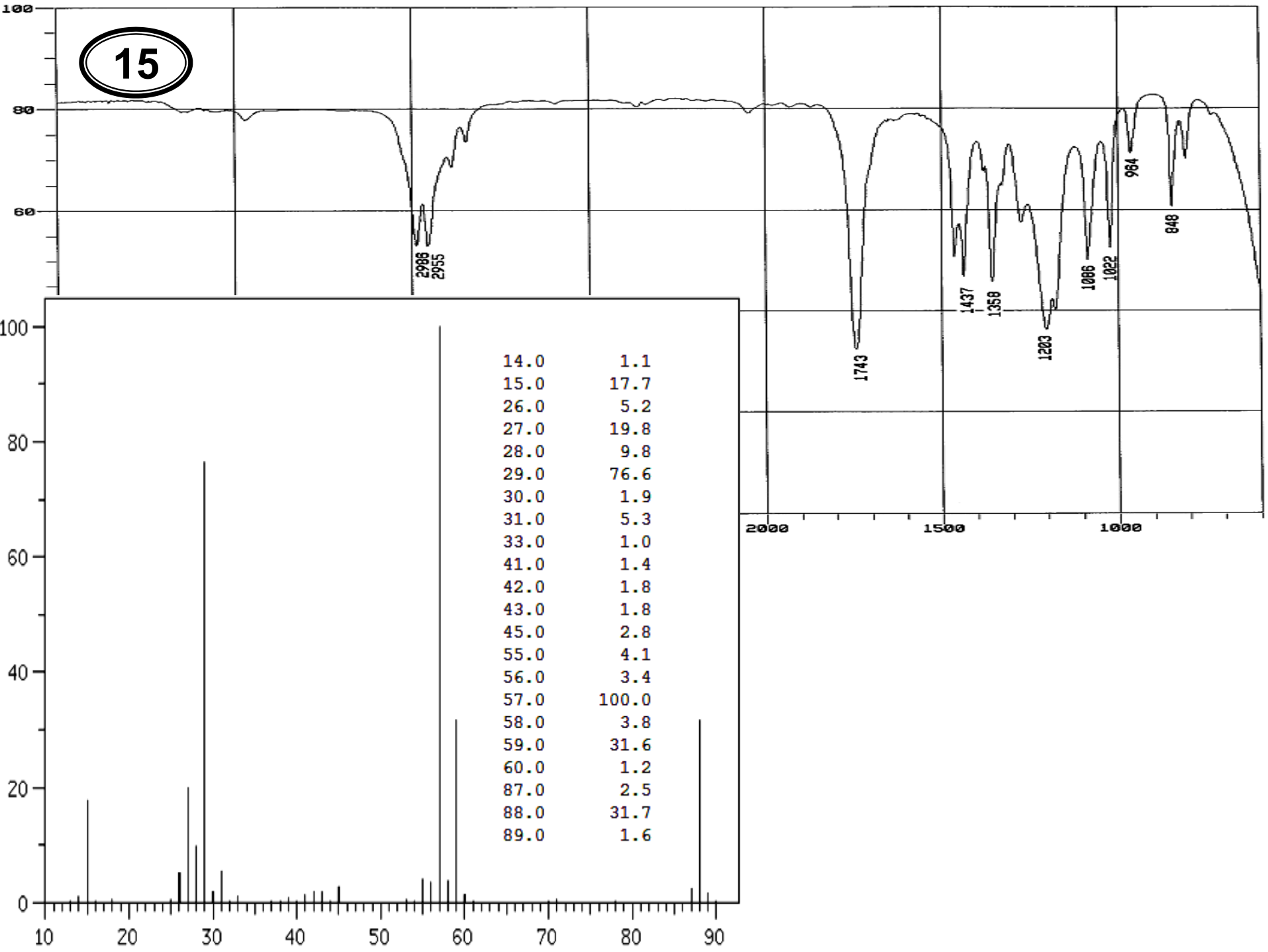
14



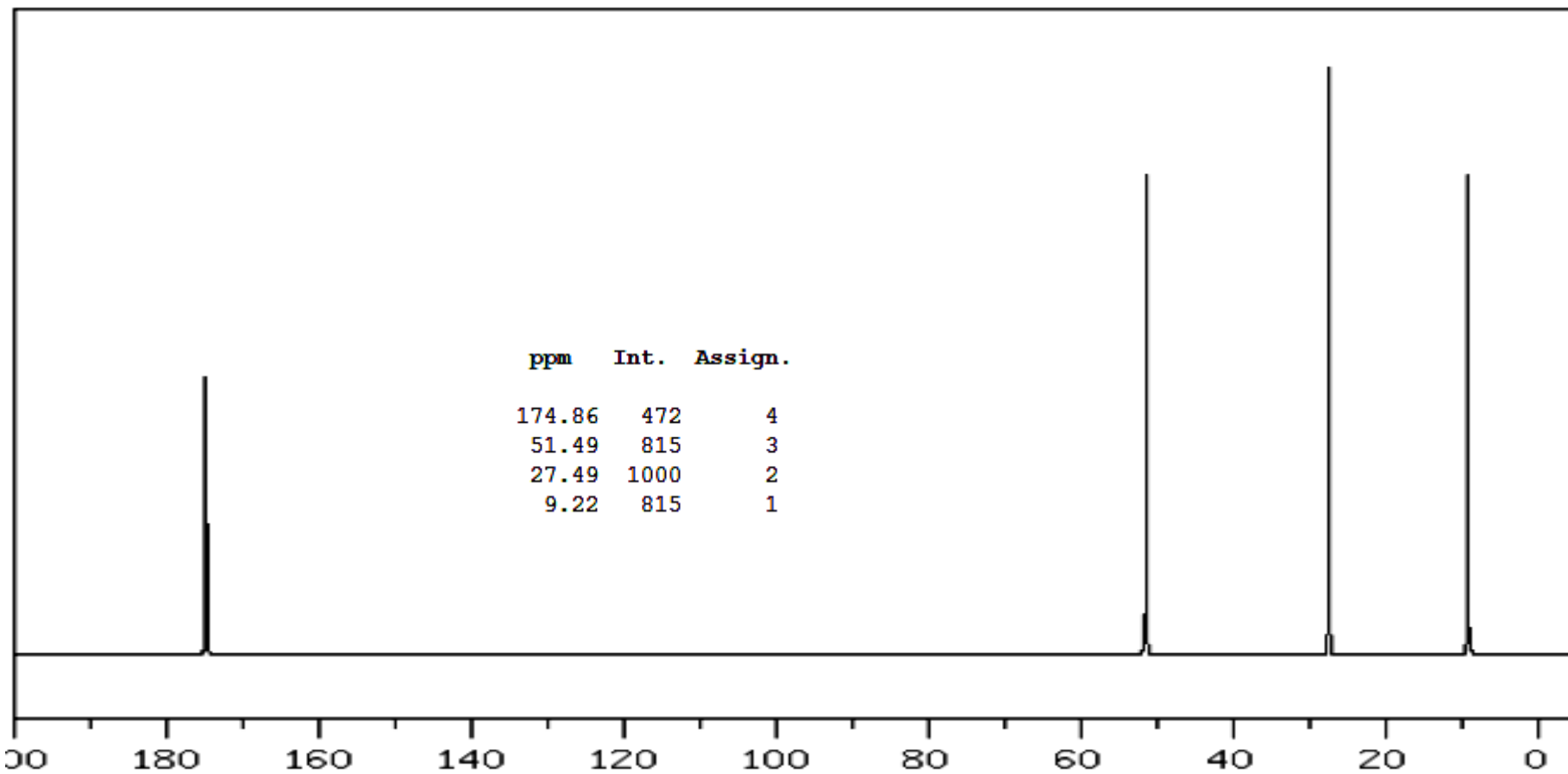
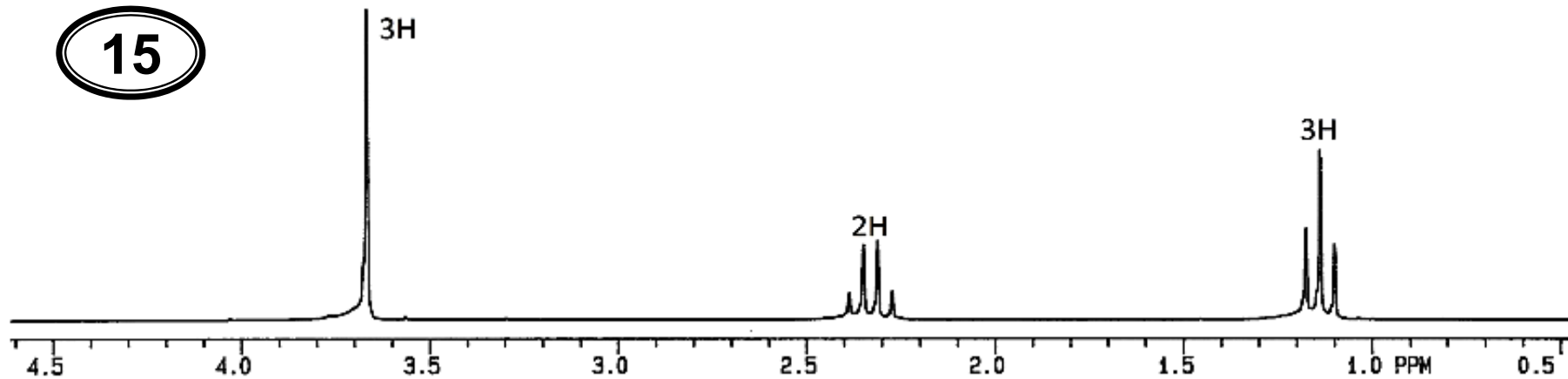
14



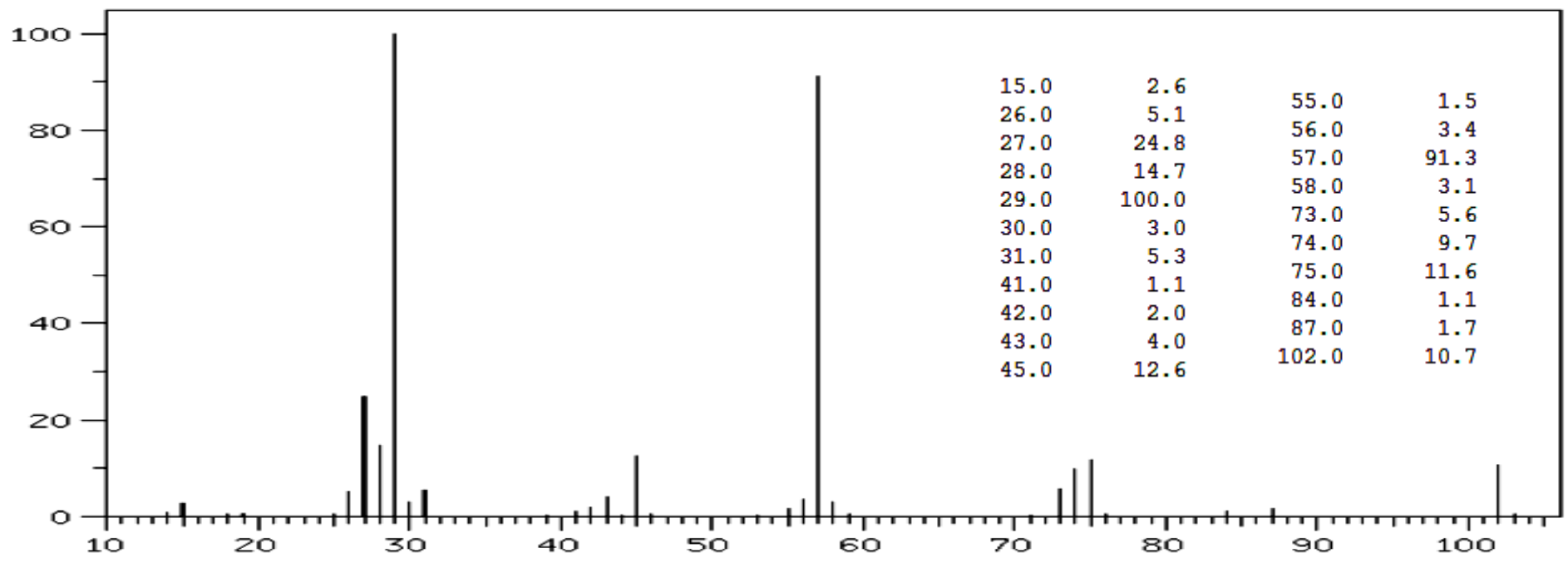
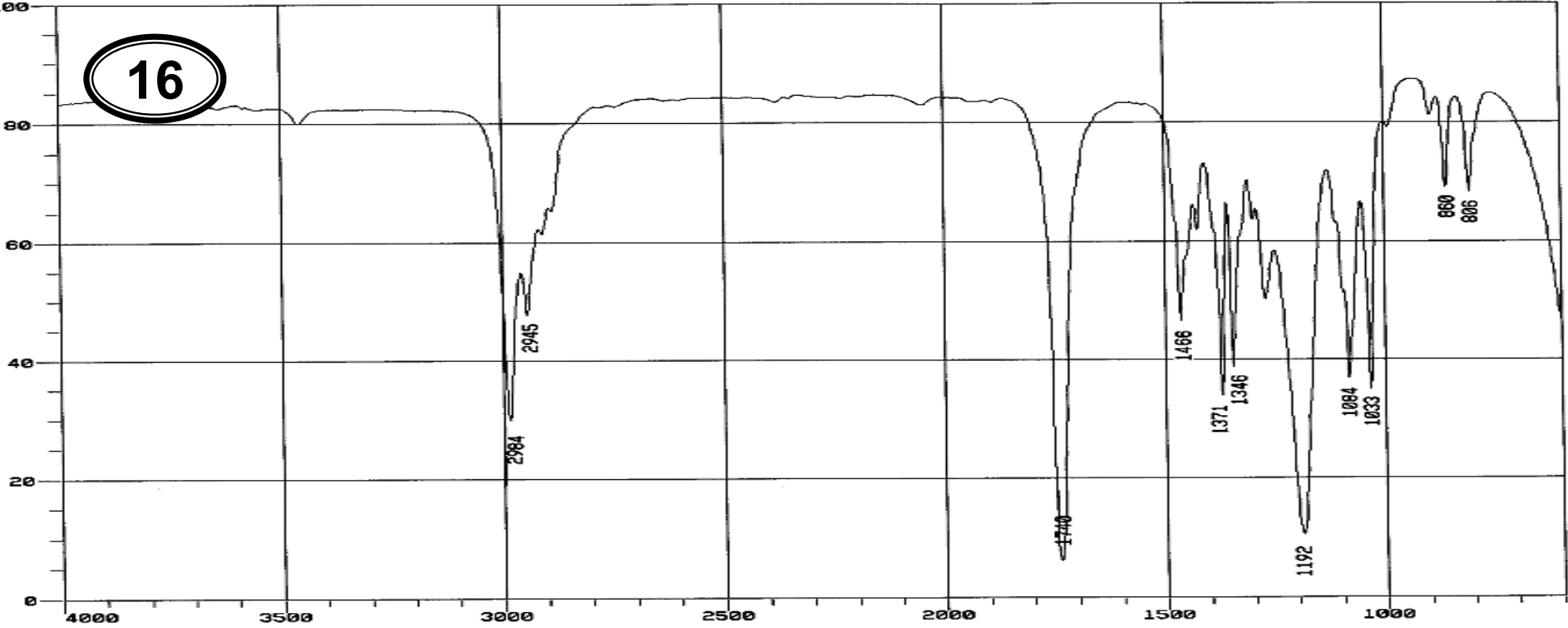
15



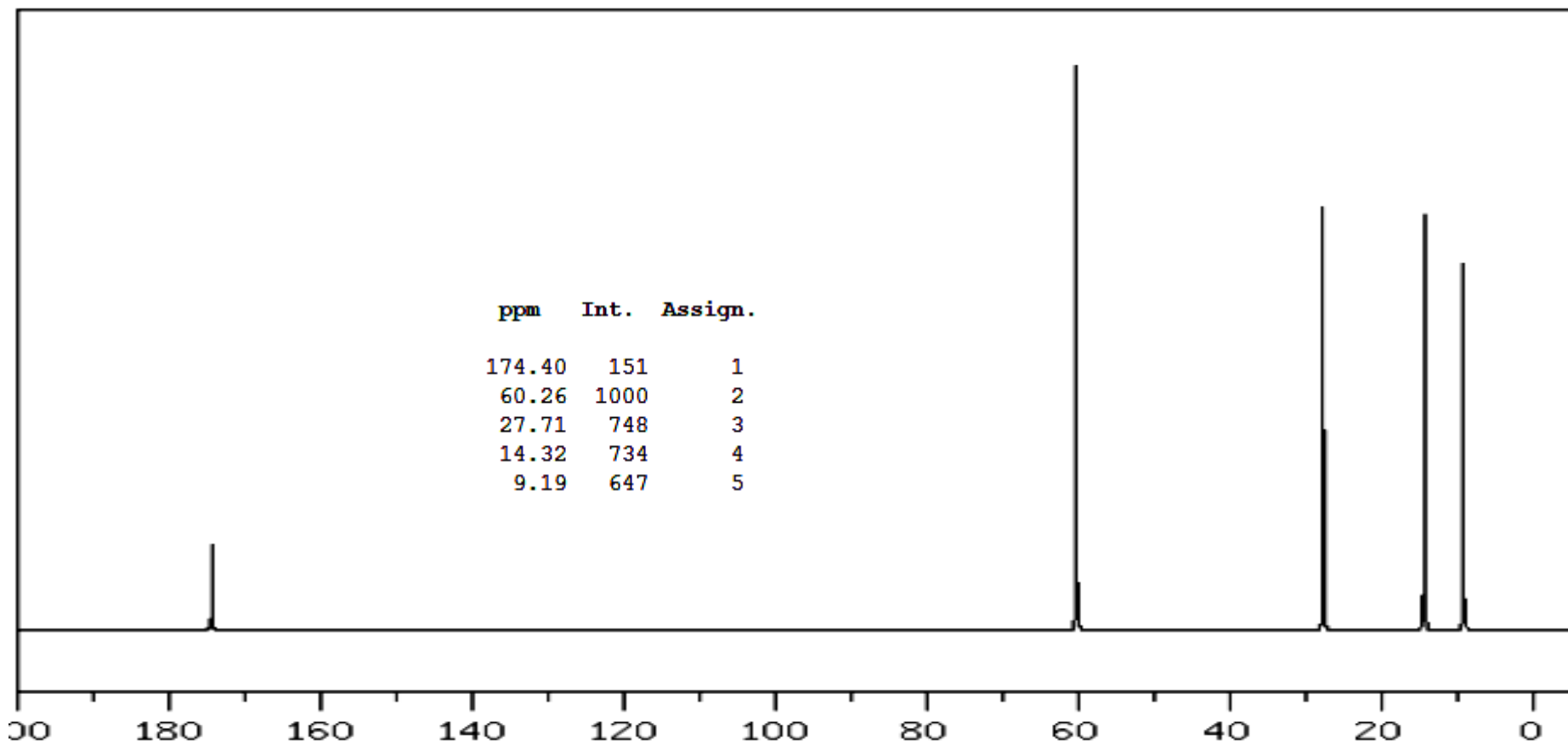
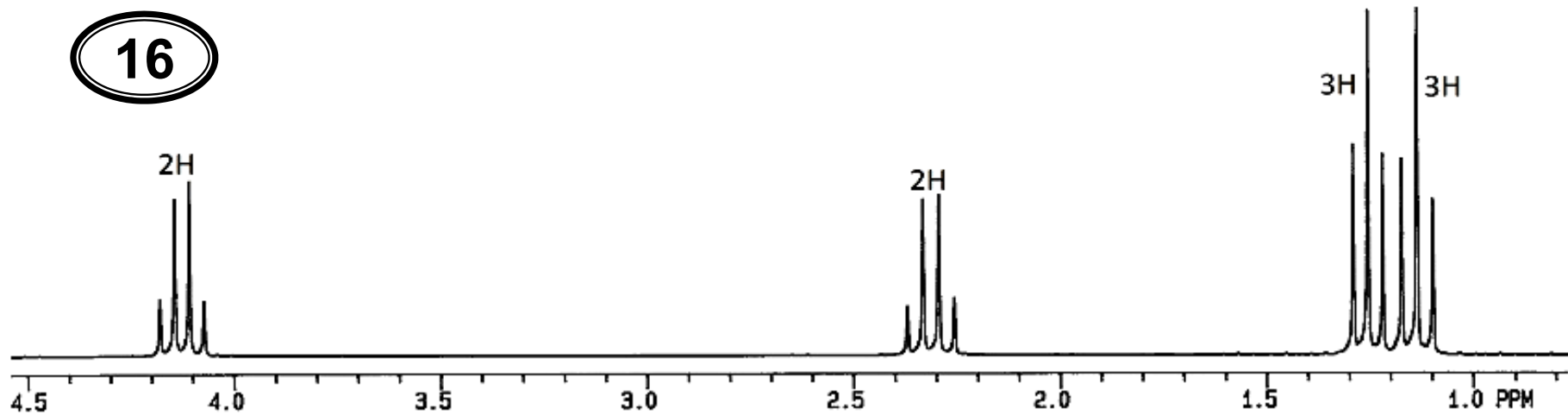
15



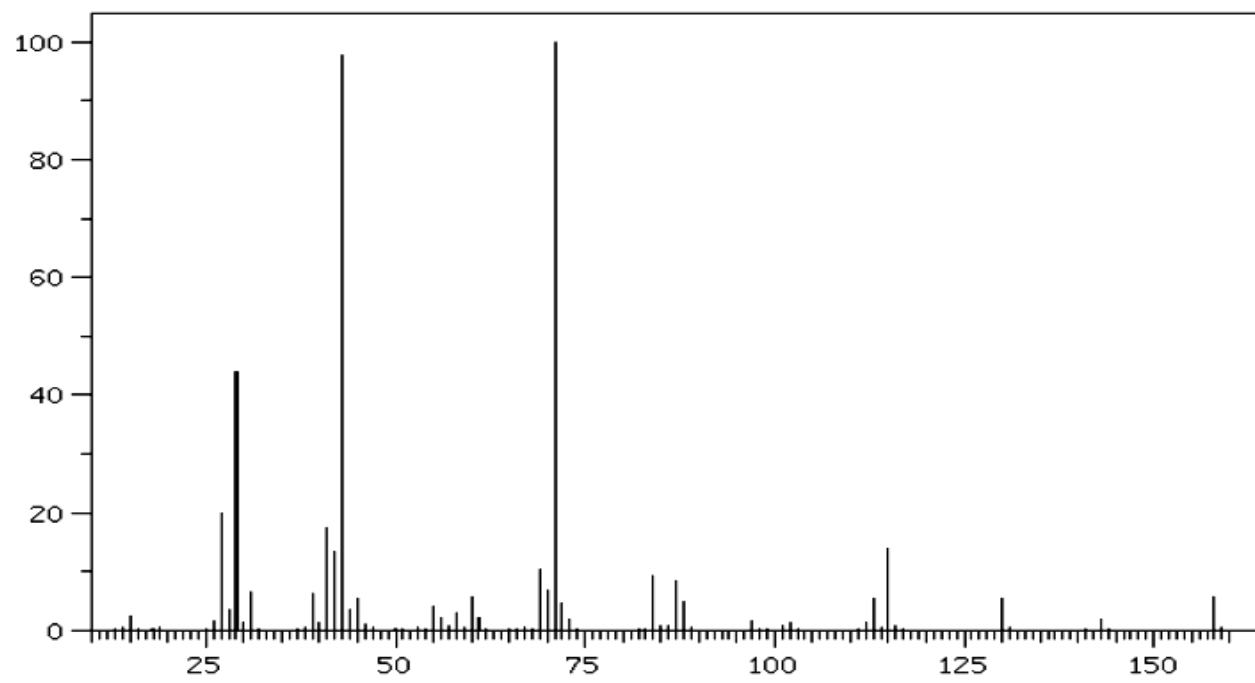
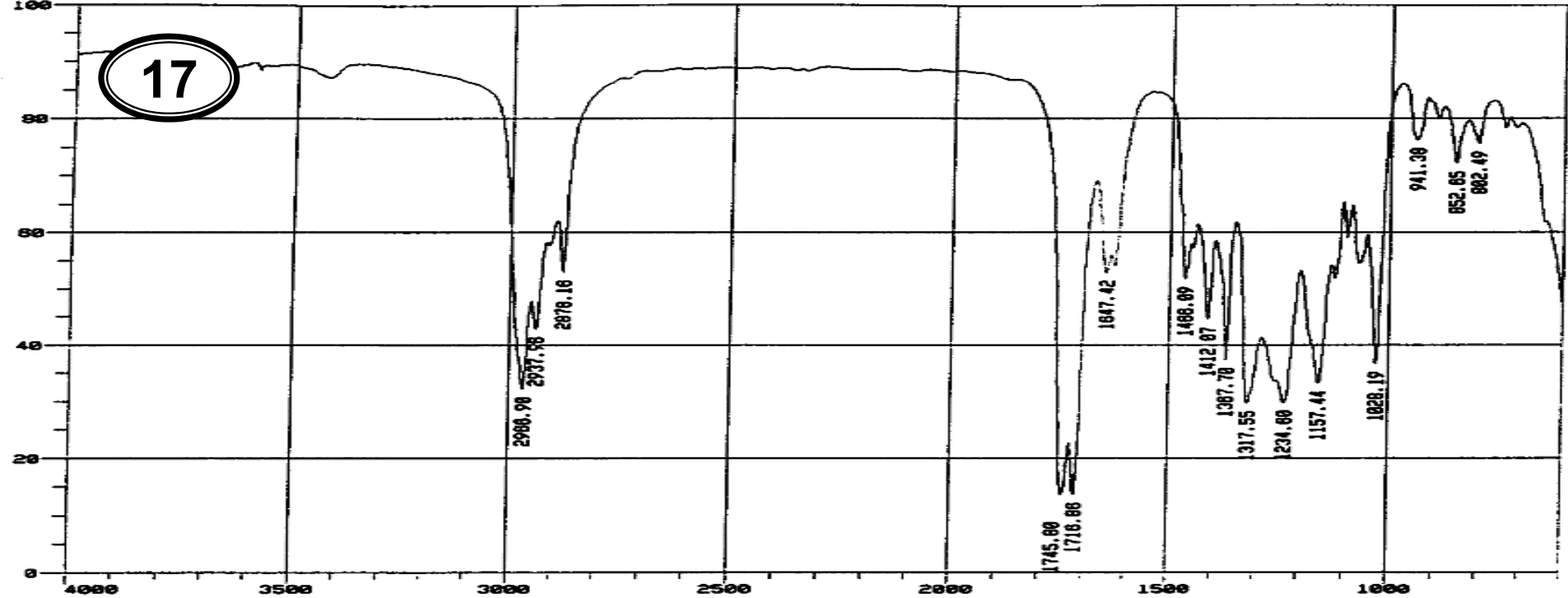
16



16

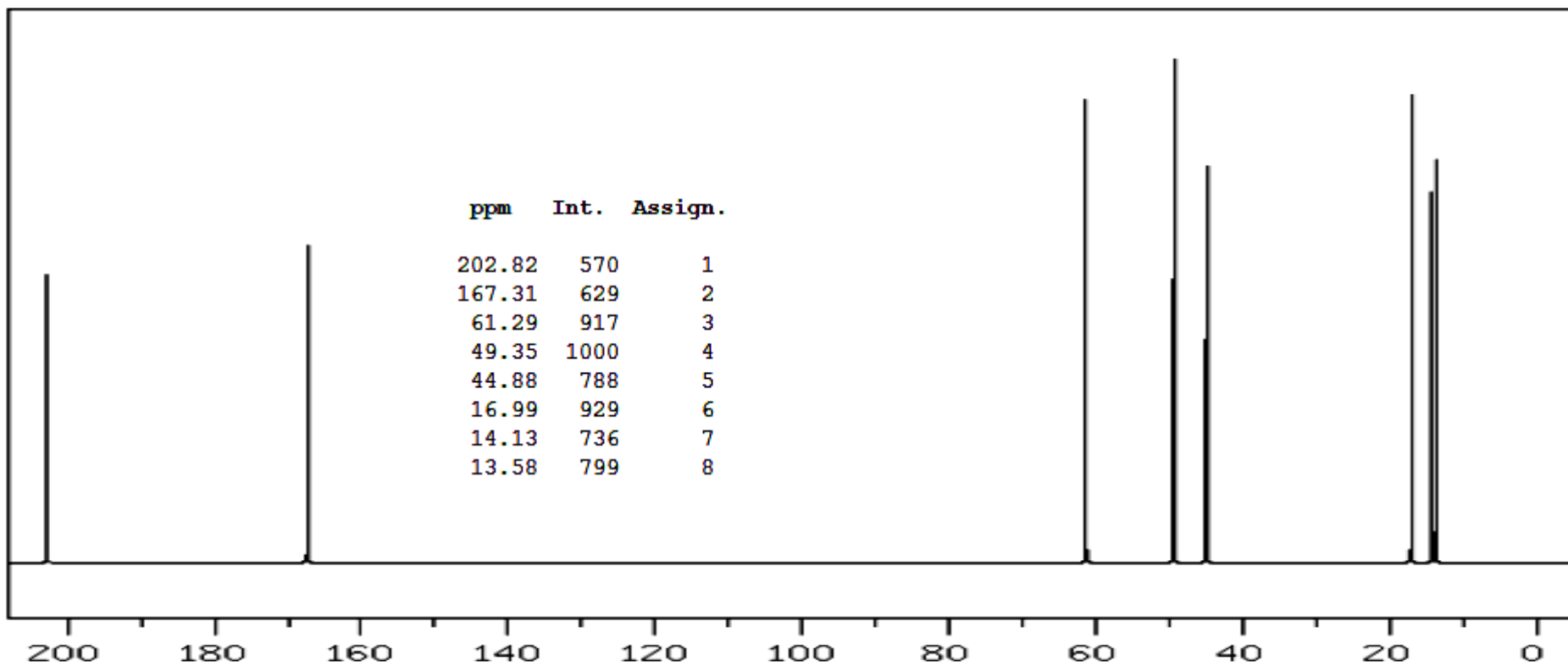
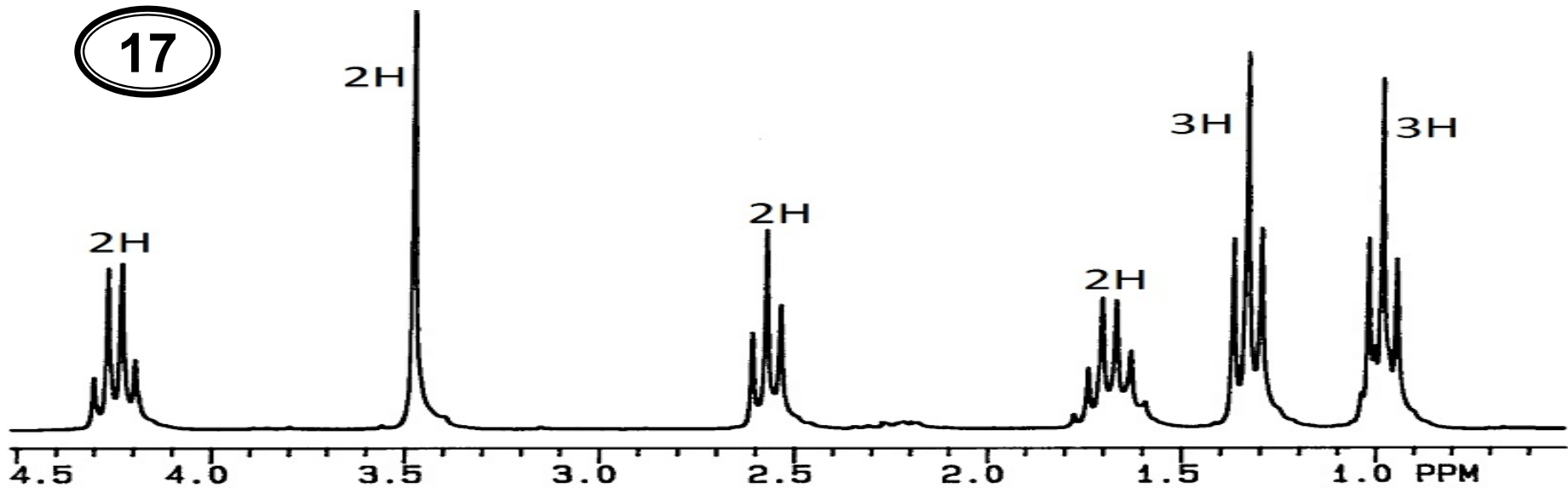


17

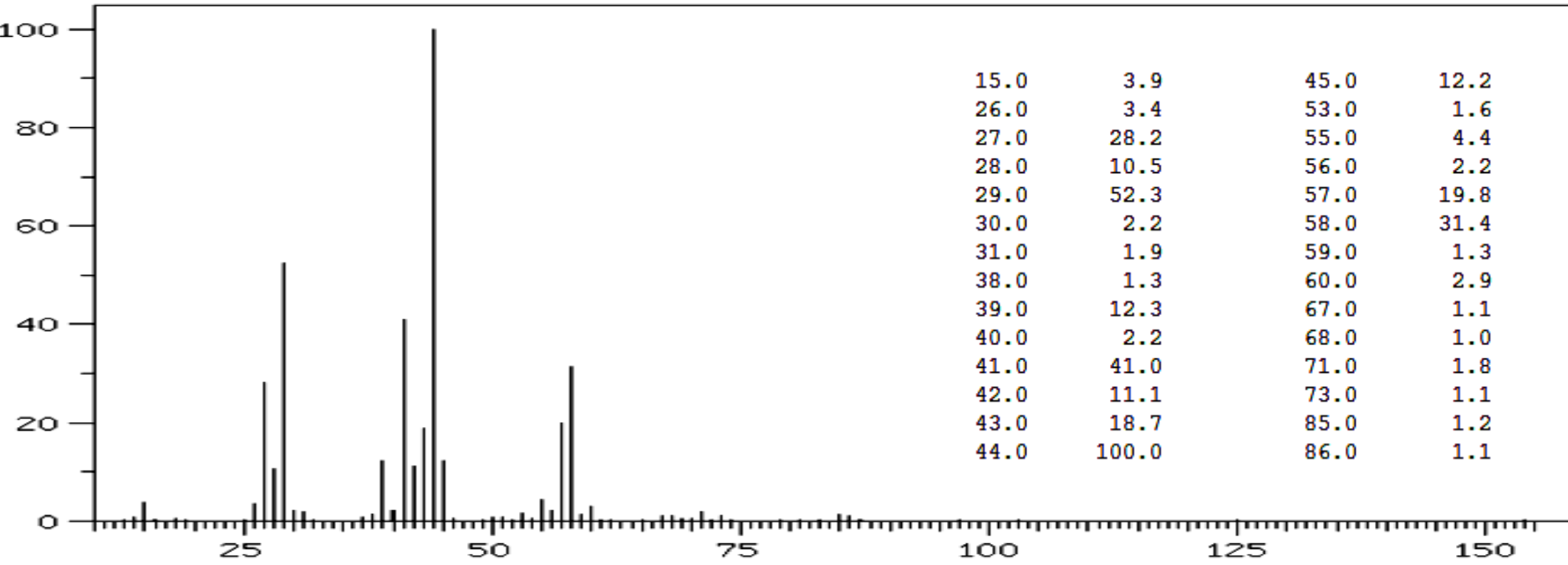
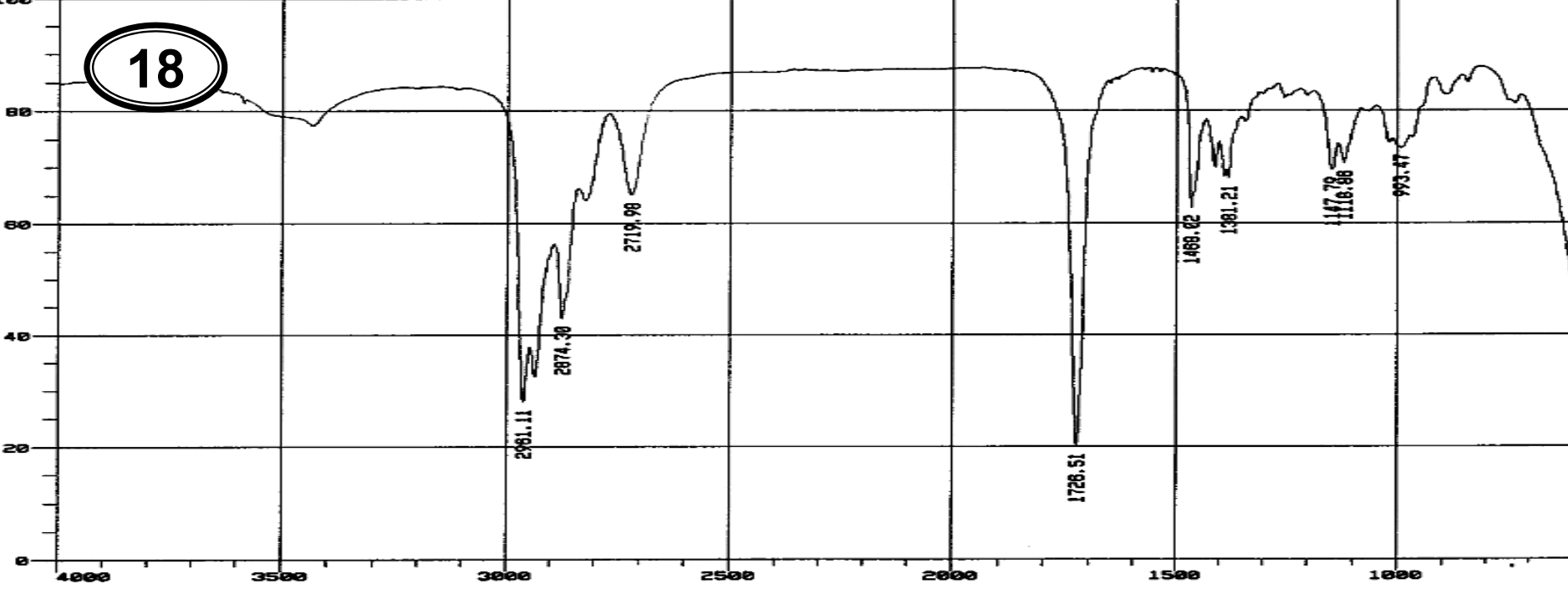


15.0	2.5	60.0	5.6
26.0	1.7	61.0	2.1
27.0	19.9	69.0	10.4
28.0	3.5	70.0	6.7
29.0	44.0	71.0	100.0
30.0	1.2	72.0	4.5
31.0	6.6	73.0	1.8
39.0	6.2	84.0	9.3
40.0	1.4	87.0	8.4
41.0	17.4	88.0	4.9
42.0	13.4	97.0	1.5
43.0	97.7	102.0	1.2
44.0	3.6	112.0	1.4
45.0	5.3	113.0	5.4
46.0	1.0	115.0	13.9
55.0	4.1	130.0	5.5
56.0	2.2	143.0	2.0
58.0	3.0	158.0	5.8

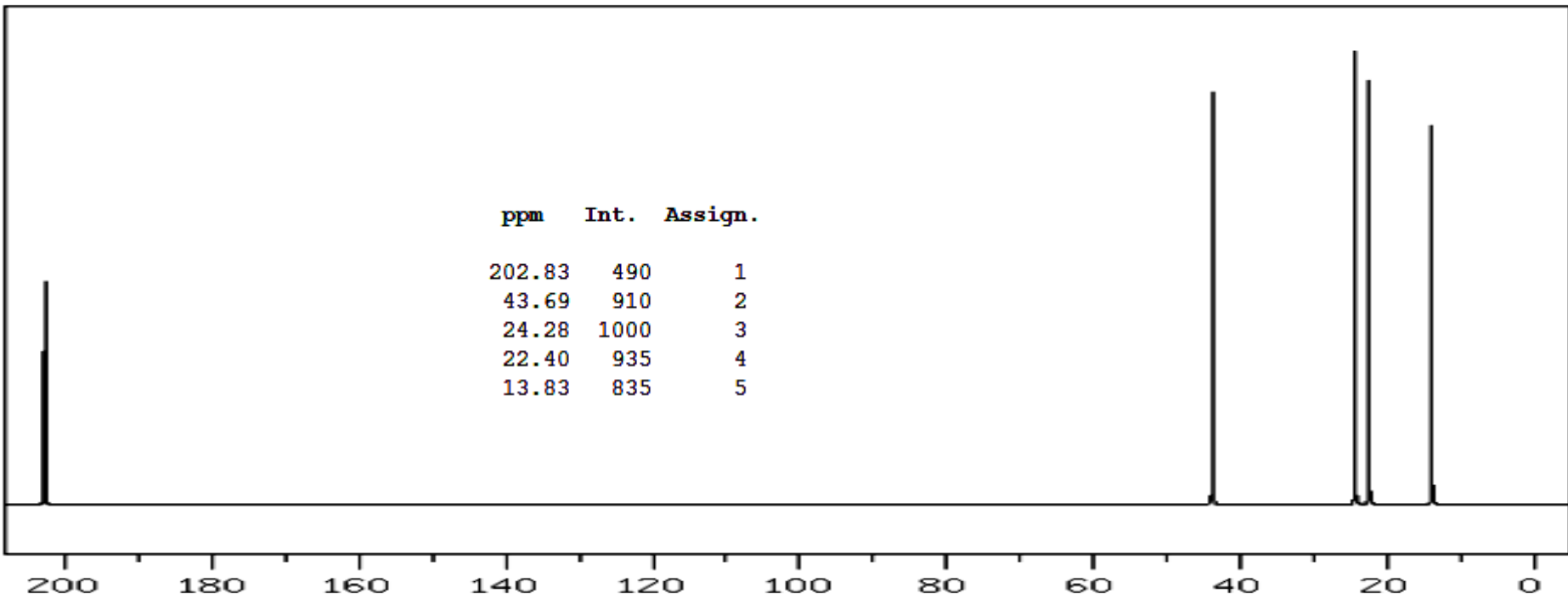
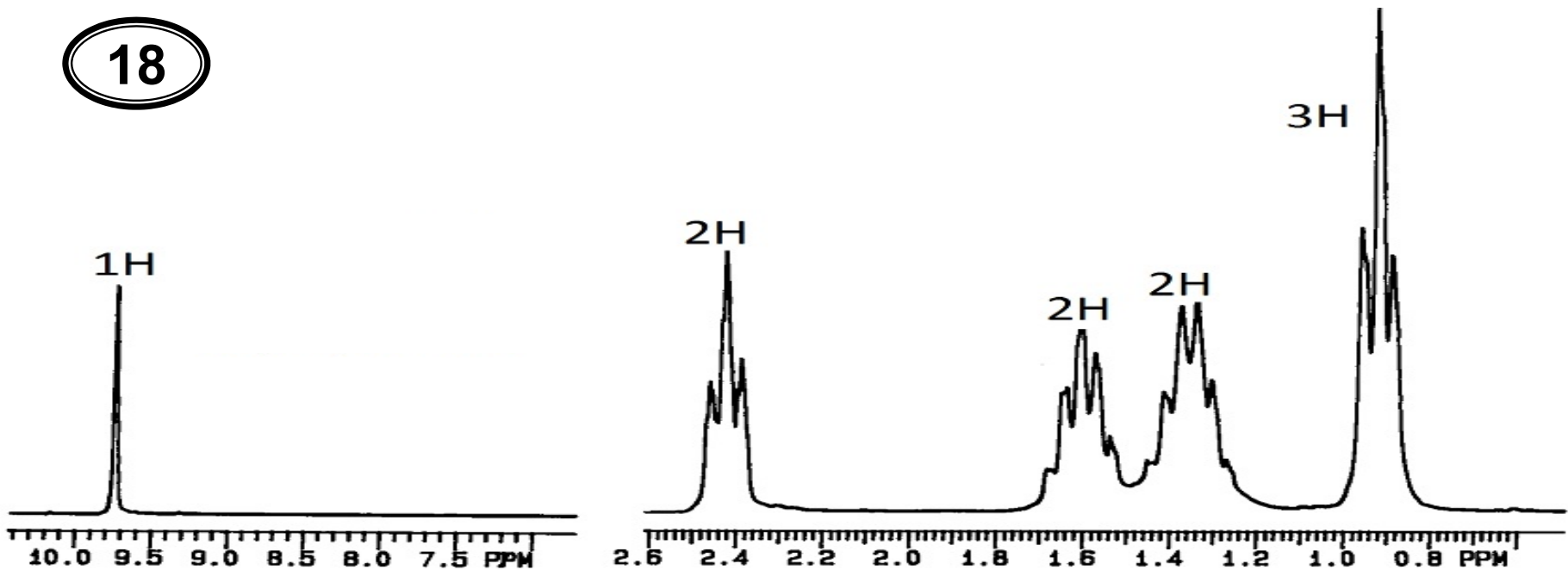
17

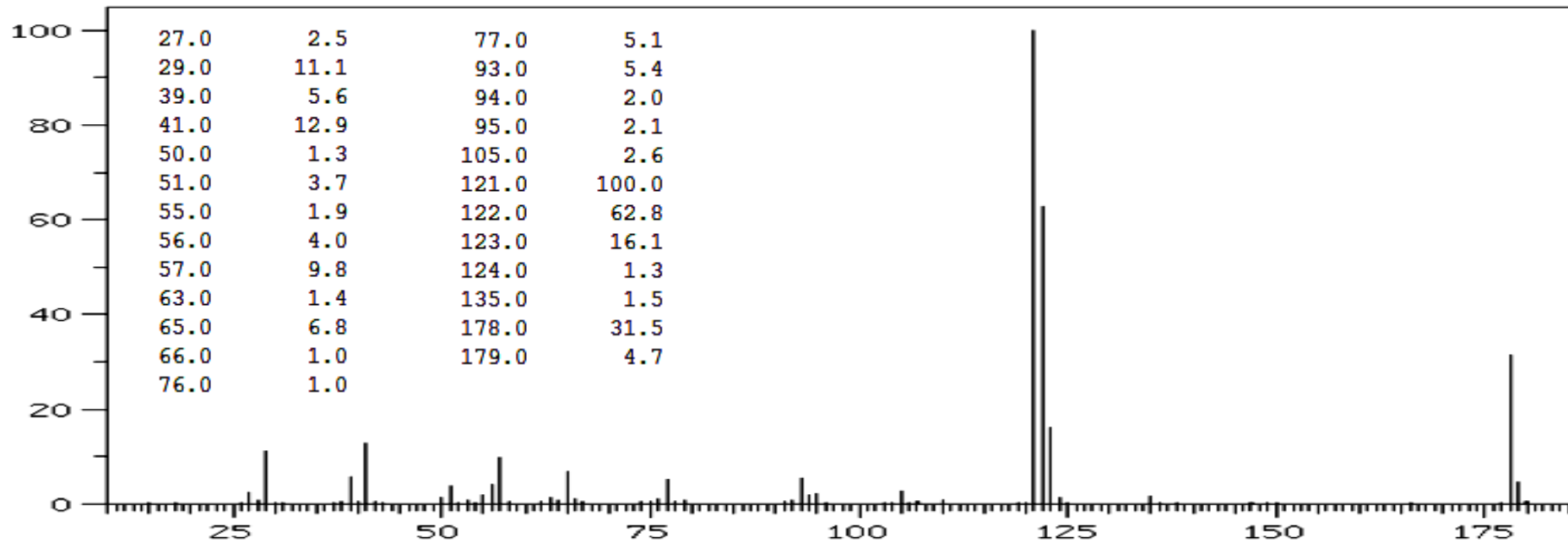
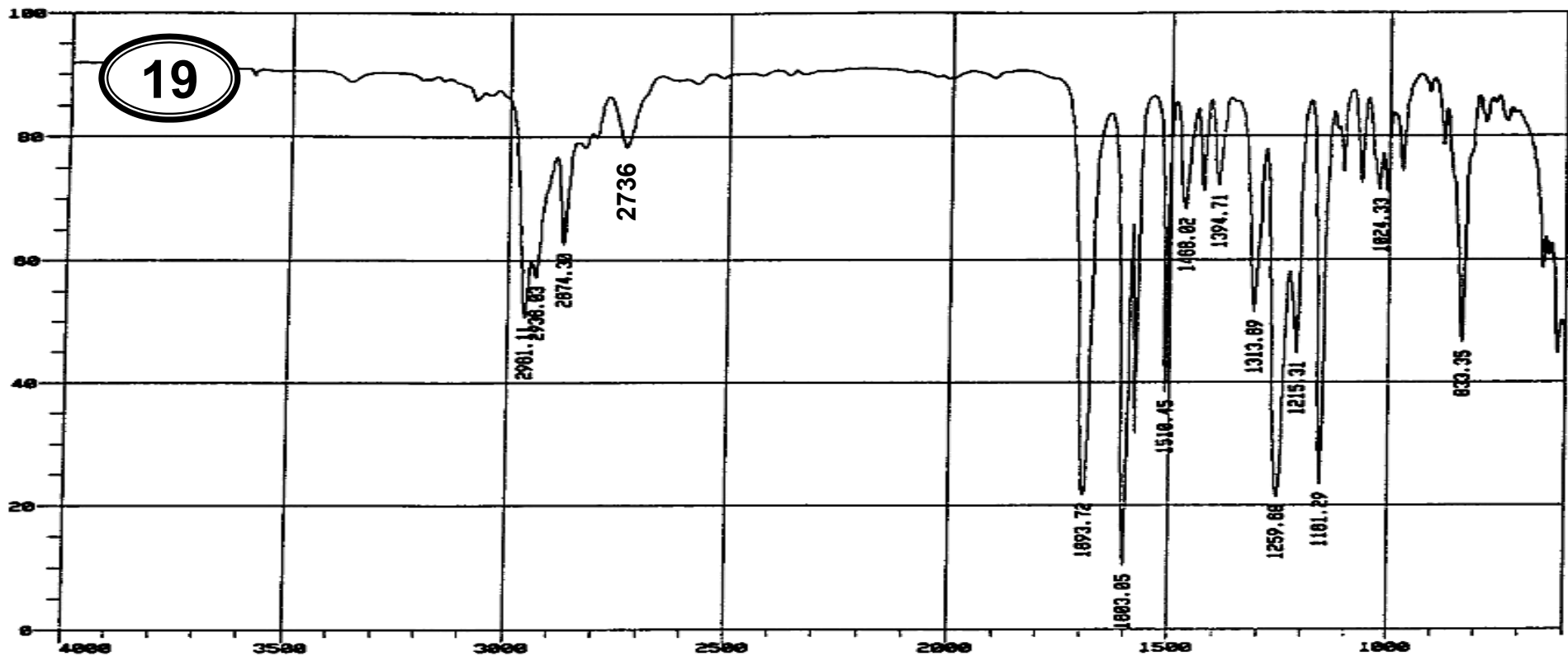


18

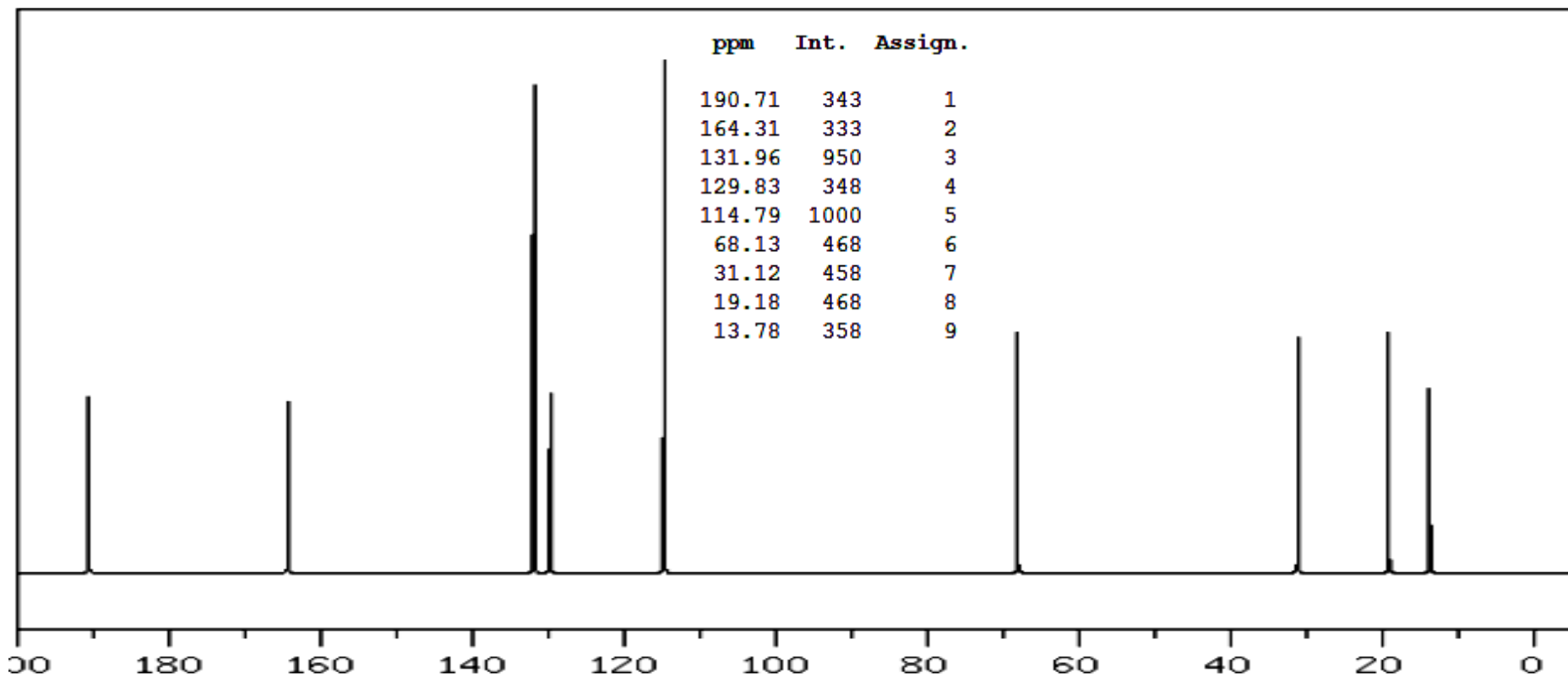
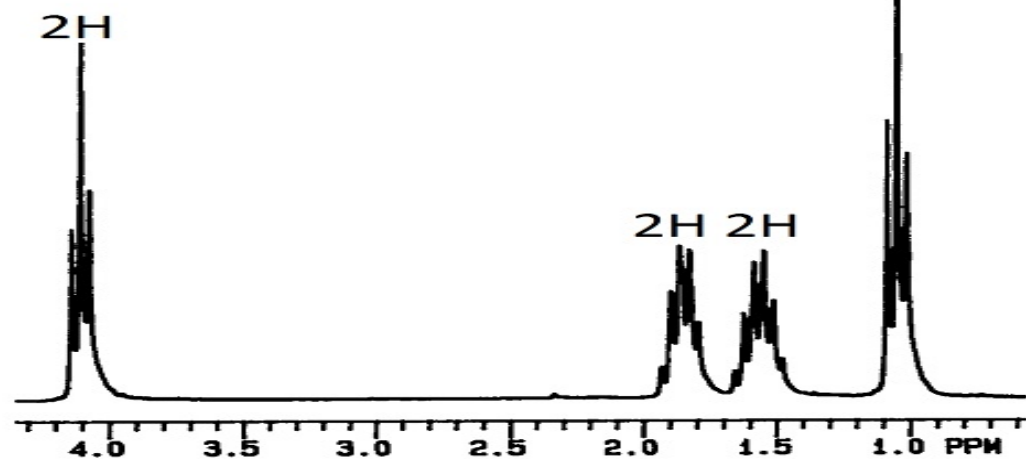
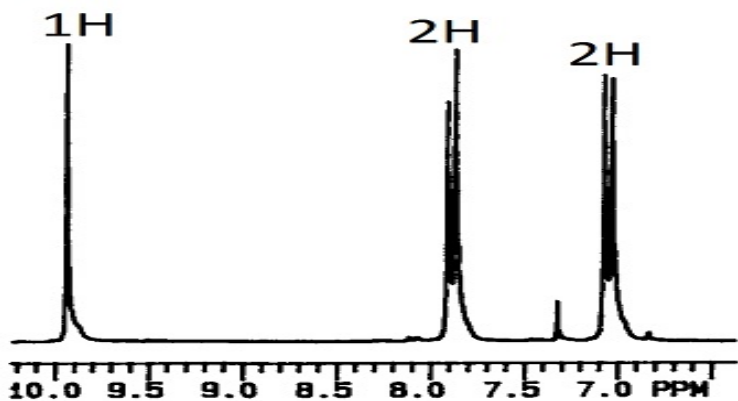


18

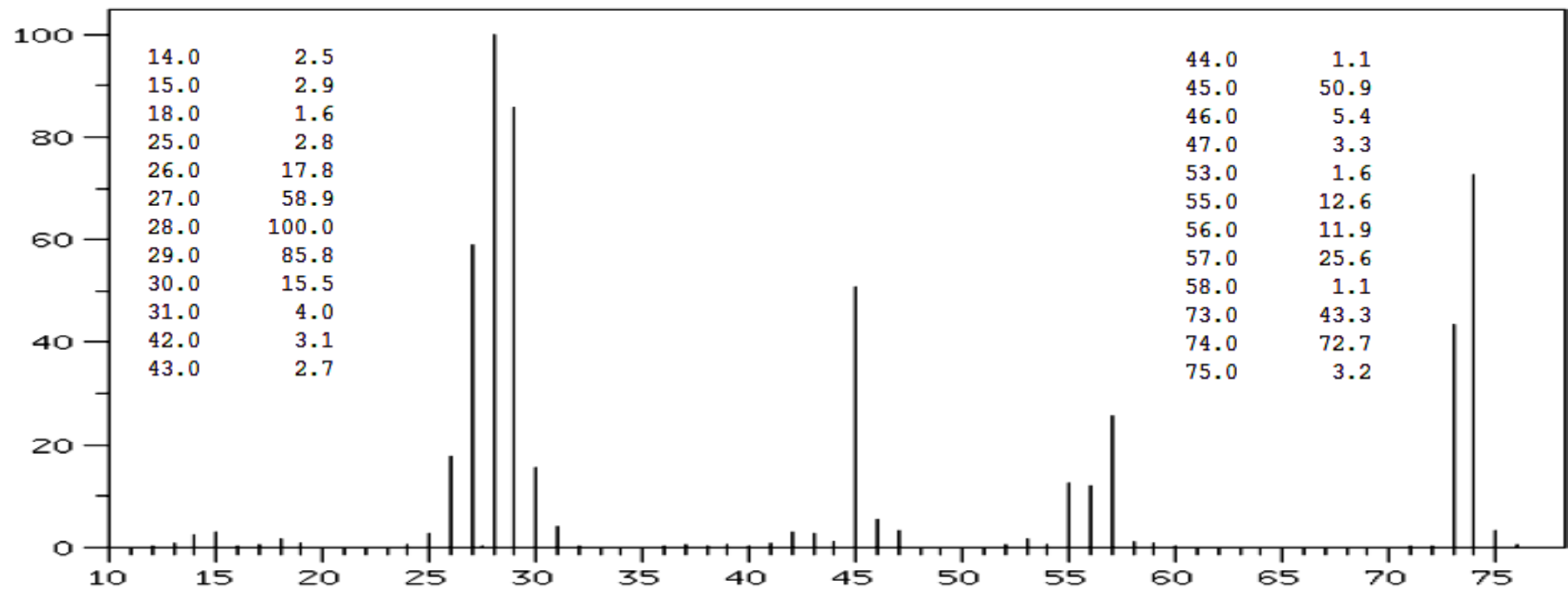
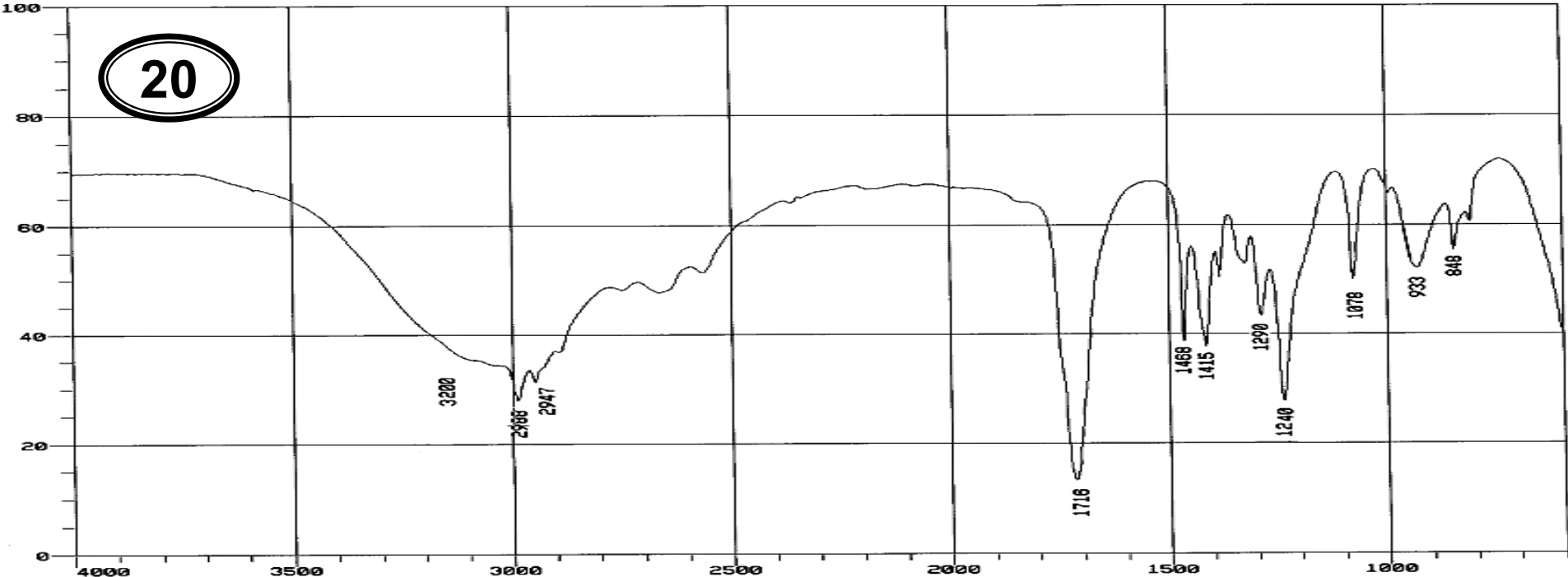




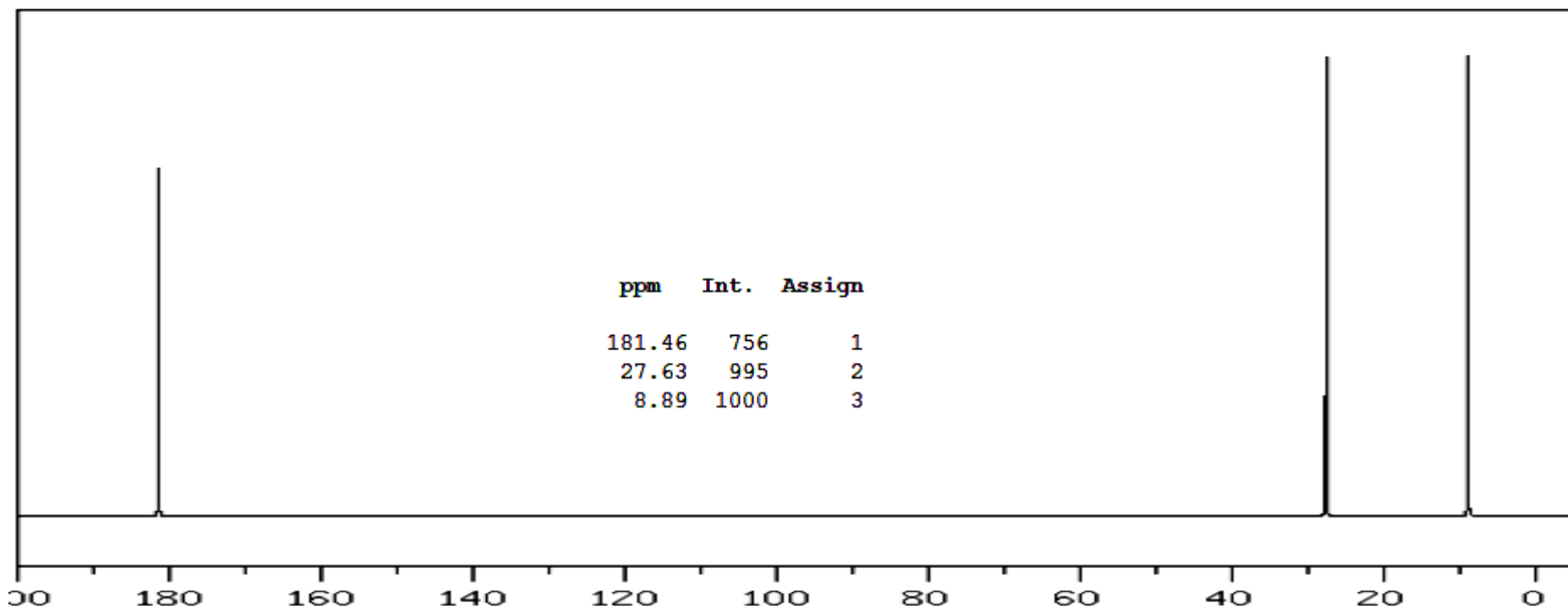
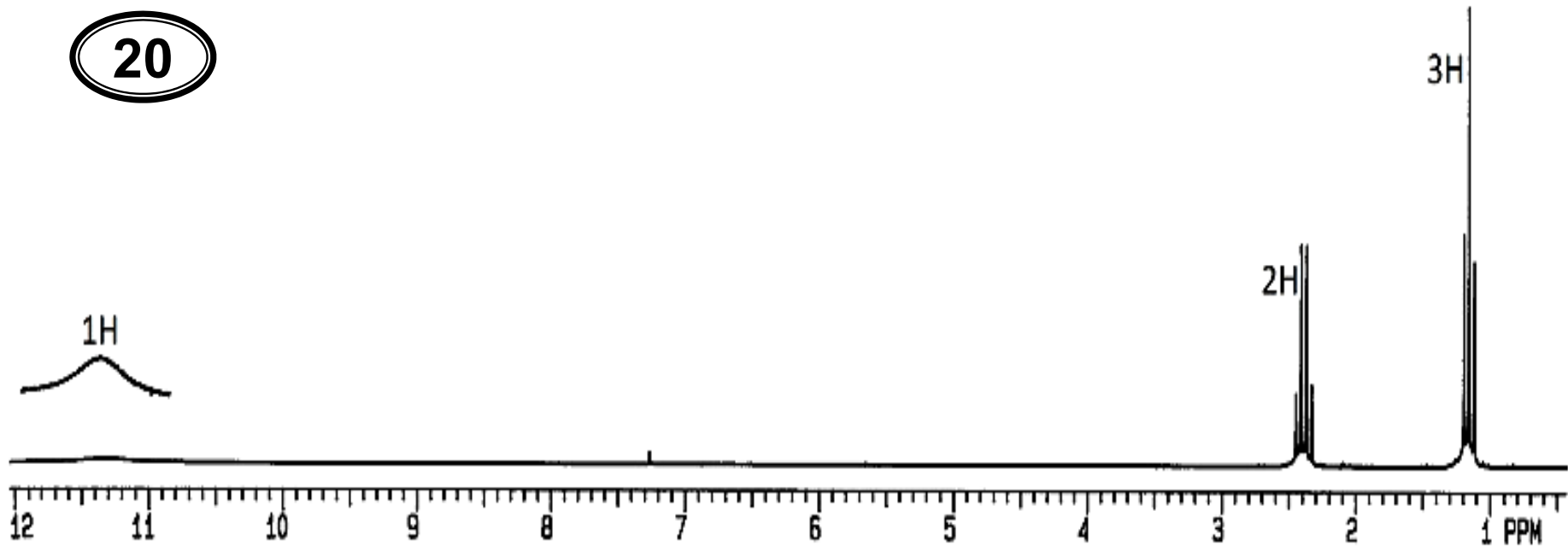
19



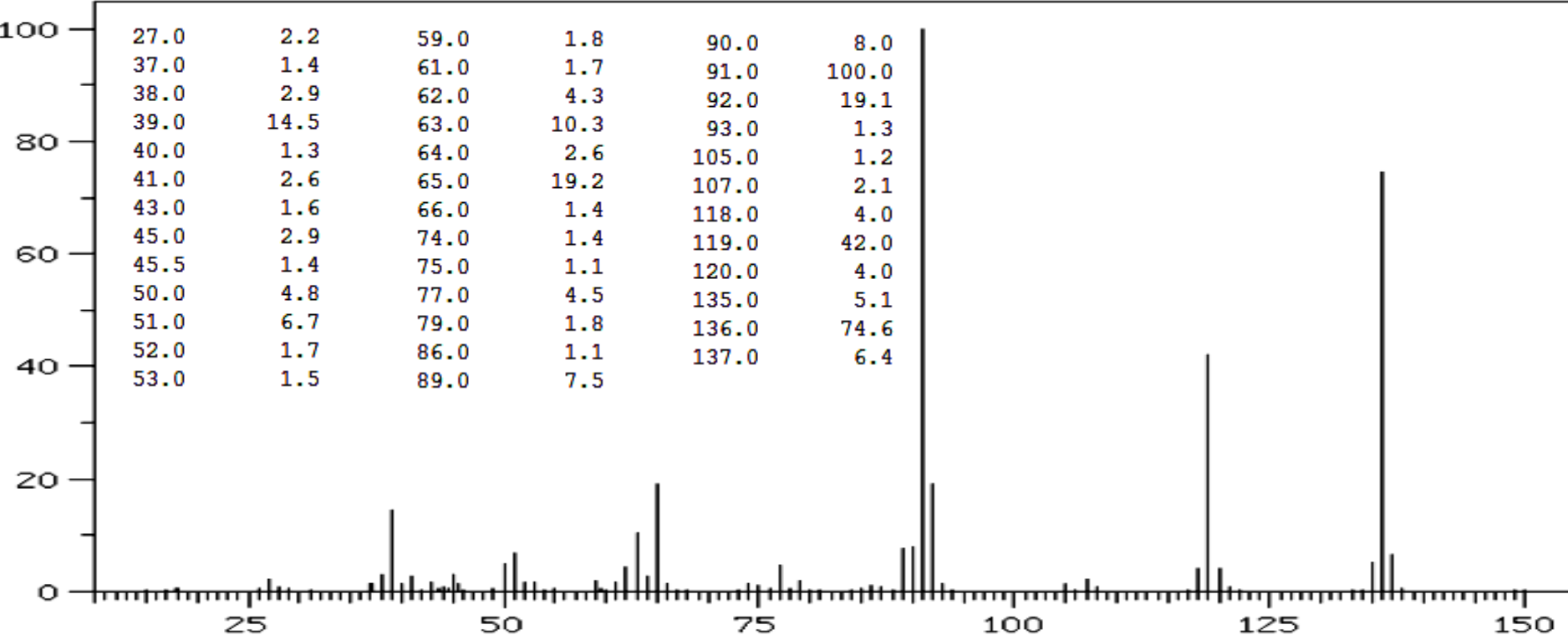
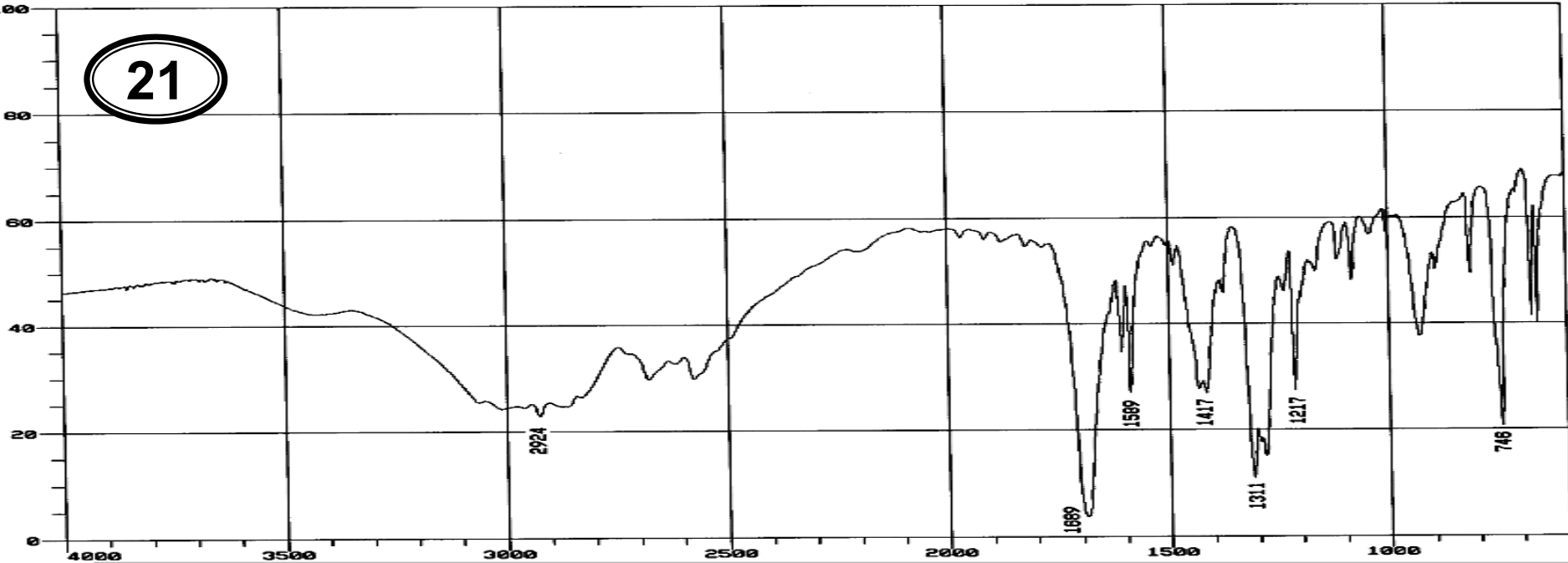
20



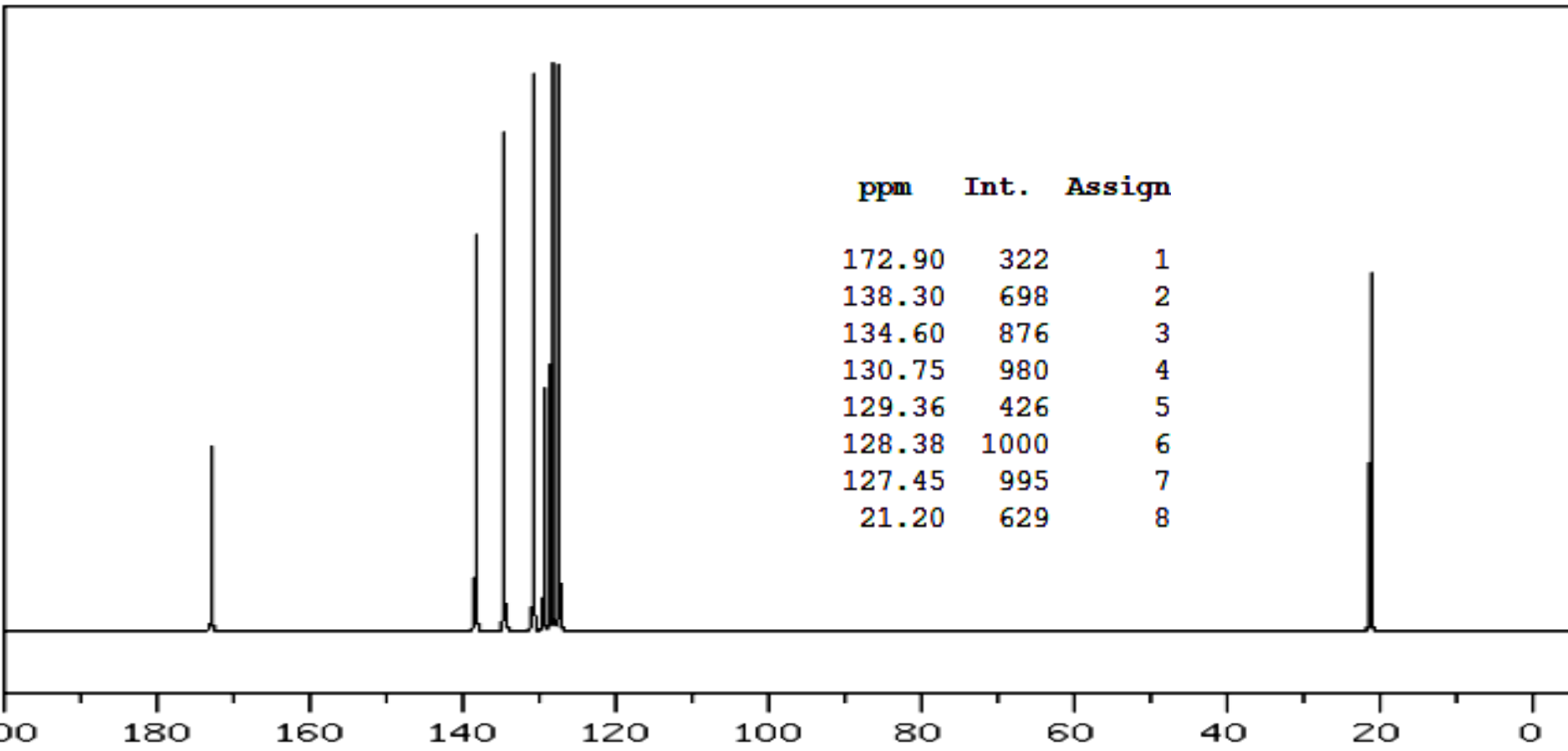
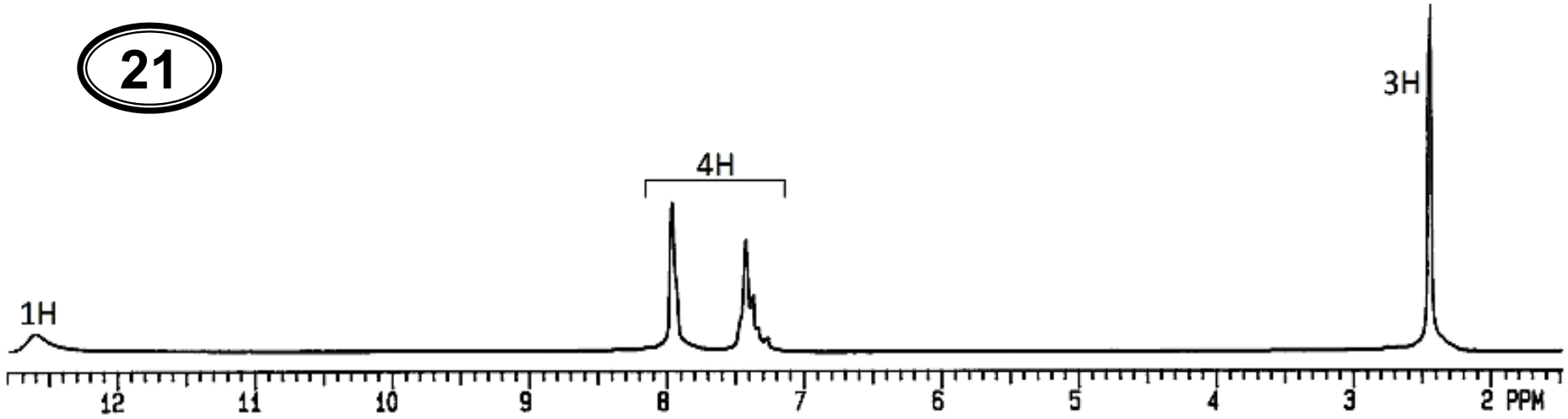
20



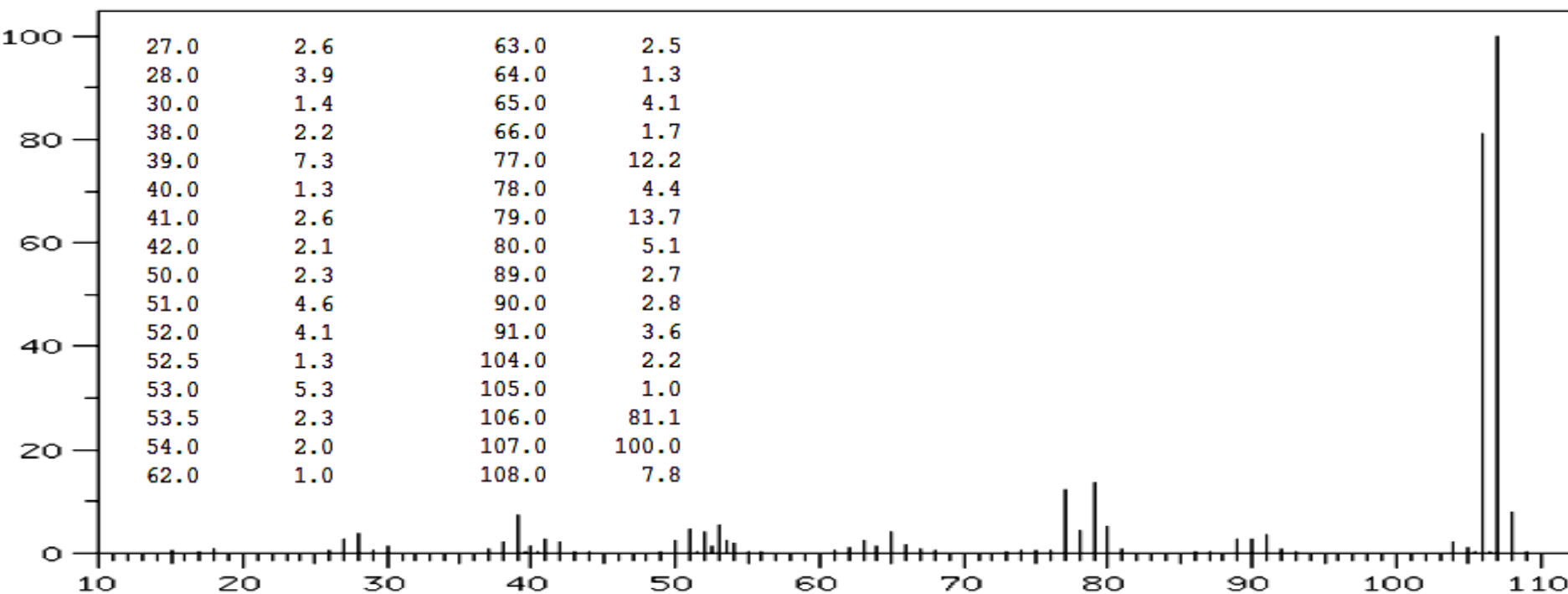
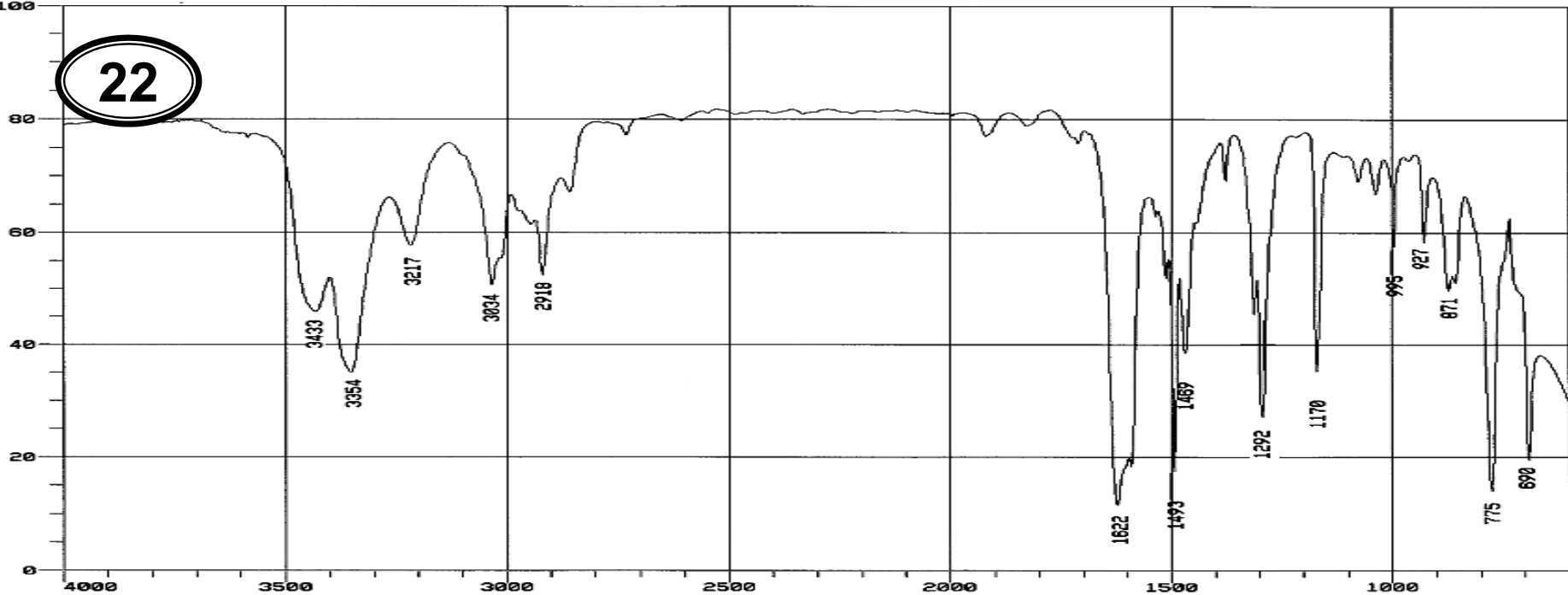
21



21



22



22

